



# THE BLACK RATTLER

## NEXT GENERATION AIR TOOLS

### 1/2" Impact Wrench

**RMAX1200**



### Specifications

- Breakaway Torque: 1,200 ft. lbs / 1,627 Nm
- Working Torque: 50-800 ft. lbs / 68-1,085 Nm
- Maximum Applied Torque: 800 Ft./Lbs.
- Free Speed: 11,500 RPM
- Weight: 4 lbs / 1.80 kg
- Avg Air Consumption: 4.9 cfm
- Sound Level: 97.3 dBA
- Air Inlet: 1/4"
- Recommended Hose Size: 3/8"

### Warranty Statement

Thank you for purchasing this Endeavour "Black Rattler" impact wrench. Endeavour Tools guarantees this impact wrench against defects in material and workmanship for a period of **24 months from date of purchase.**

- Endeavour Tools warrants the quality of these goods against defects in material and workmanship only.
- Defective goods shall only be replaced, repaired or the purchase price refunded if:
  - the customer notifies Endeavour Tools by providing a full report describing the defect in writing within 7 days of discovery of the defect; and
  - the notification above provided to Endeavour Tools is prior to the expiry of the warranty period; and
  - the customer forwards the defective goods together with proof of purchase from Endeavour Tools or its authorised distributor at their expense, within 14 days of any request by Endeavour Tools to do so; and
  - the goods since the date of delivery to the customer have been properly maintained, store and housed and the goods have not been abused or modified; and
  - Endeavour Tools determines that there is a defect due to faulty workmanship or the use of a defective material.
- Endeavour Tools may replace or repair the defective good (or part thereof) or refund the purchase price of the defective good at its option.
- Endeavour Tools shall not be responsible for any loss or damage arising from or in any way connected with the use of the goods.
- To the maximum extent permitted by law, a claim in respect to a defective good shall not be permitted in the event that the goods have not been installed, used, maintained, or housed in a proper and workmanlike manner or in accordance with the usual standards or manufacturers specifications or instructions or if the goods have been modified, repaired or altered by any person apart from Endeavour Tools.

Notwithstanding our warranty terms above, our goods come with guarantees that cannot be excluded under the Australian Consumer Law. You are entitled to a replacement or refund for a major failure and for compensation for any other reasonably foreseeable loss or damage. You are also entitled to have the goods repaired or replaced if the goods fail to be of acceptable quality and the failure does not amount to a major failure.

The benefits under our warranty are in addition to other rights and remedies under a law in relation to the goods. Warranty provided by and warranty claims should be submitted to the address below.



9 321280 326392



#### Warning:

Rated RPM Of The Accessory Used Must Exceed The Maximum Tool RPM Shown



For safety, performance and maximum durability of parts DO NOT operate this tool above 90 PSI.

Lubricate the air motor daily with quality air tool oil



**endeavourtools**  
Innovation - Performance - Quality

Endeavour Tools PTY LTD  
ABN 13 006 307 213

sales@endeavourtools.com.au  
www.endeavourtools.com.au

50 Jellico Drive  
Scoresby VIC 3179  
Phone: +61 3 9753 3800  
Fax: +61 3 9753 3933

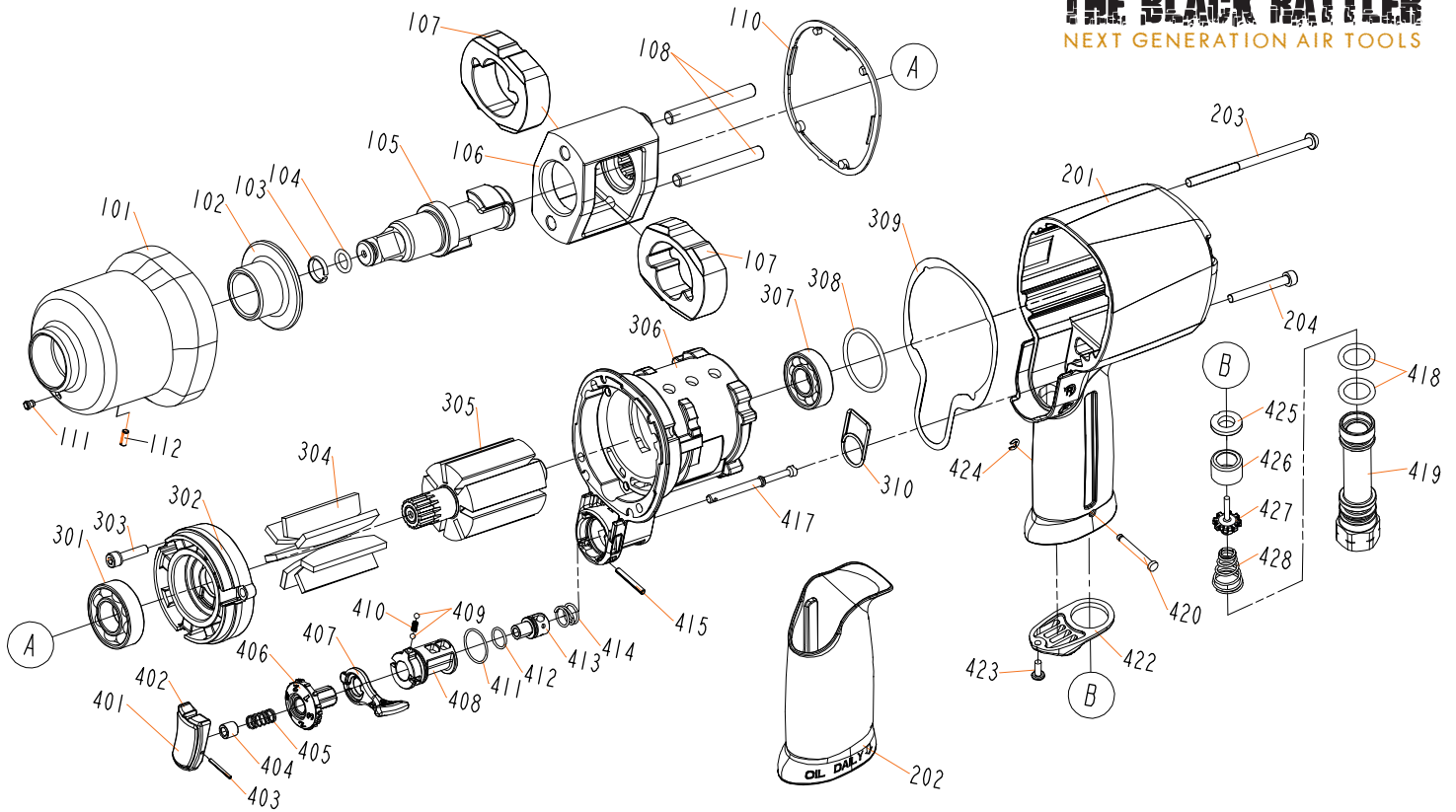
Suite 1/2, 12-18  
Victoria Street East  
Lidcombe NSW 2141  
Phone: +61 2 9646 4222  
Fax: +61 2 9646 5399

# RMAX1200

## 1/2" Impact Wrench



**THE BLACK RATTLER**  
NEXT GENERATION AIR TOOLS



Ref. No.	Part No.	Description	Q'ty	Ref. No.	Part No.	Description	Q'ty
101	RS4150101	Hammer Case	1	401	RS2125401	Trigger A	1
102	RS1761103	Hammer Case Bushing	1	402	RS2125423	Trigger B	1
103	RS1761104	Socket Retainer	1	403	RS2125402	Spring Pin	1
104	RS4135104	O-ring	1	404	RS3125403	Trigger Bushing	1
105	RS1761106	Anvil	1	405	RS4150405	Pusher Spring	1
106	RS1761109	Hammer Frame	1	406	RS2125405	Regulator A	1
107	RS1761108	Hammer	2	407	RS4135407	Lever	1
108	RS1761107	Hammer Frame Pin	2	408	RS2125407	Reverse Valve	1
110	RS4135110	Packing-hammer Case	1	409	RS173313	Ball	1
111	RS1837220	Hammer Case Grease Fitting	1	410	RS1077410	Spring	1
112	RS4135112	Spring Pin	1	411	RS2125415	O-Ring	1
201	RS4150201	Housing	1	412	RS1734414	O-Ring	1
202	RS4150202	Handle Grip	1	413	RS2125411	Regulator	1
203	RS4135203	Half Round Hd. Hex. Bolt	1	414	RS2125412	Spring	1
204	RS2125204	Hex. Soc. Hd. Bolt	4	415	RS4135415	Spring Pin	1
301	RS221RA32	Bearing	1	417	RS4150417	Trigger Tip	1
302	RS4135302	Front Bearing Plate	1	418	RS1735410	O-Ring	2
303	RS4135303	Bolt Assembly	3	419	RS2125418	Air Inlet	1
304	RS4135304	Blade	7	420	RS4150420	Latch Pin	1
305	RS4135305	Rotor	1	422	RS1735408	Exhaust Deflector	1
306	RS4135306	Cylinder Unit	1	423	RS1735411	Tap Bolt	1
307	RS227B25	Bearing	1	424	RS4150424	E-Ring	1
308	RS4135308	O-ring	1	425	RS1735403	Seal	1
309	RS4135309	Gasket-cylinder	1	426	RS1735404	Bushing	1
310	RS2125310	Packing-cylinder	1	427	RS1735405	Tip Valve	1
				428	RS4150428	Spring	1

RMAX1200-TUNE

Tune up Kit Comprising: 103, 104, 110, 304 (x7), 308, 309, 310, 411, 412, 418 (x2), and 425.