



BLACK SNAKE
NEXT GENERATION AIR TOOLS

Screwdriver Adjustable Clutch

RMAX-SD



Specifications

- Free Speed: 1,800 RPM
- Torque Range: 30-70 In-Lbs
- Weight: 1.1 kg



Warning:

Rated RPM Of The Accessory Used Must Exceed The Maximum Tool RPM Shown



For safety, performance and maximum durability of parts DO NOT operate this tool above 90 PSI.

Lubricate the air motor daily with quality air tool oil

Warranty Statement

Thank you for purchasing this Endeavour "Black Snake" Air Die Grinder. Endeavour Tools guarantees this die grinder against defects in material and workmanship for a period of **24 months from date of purchase**. This warranty excludes consumable items in this kit.

- Endeavour Tools warrants the quality of these goods against defects in material and workmanship only.
- Defective goods shall only be replaced, repaired or the purchase price refunded if:
 - the customer notifies Endeavour Tools by providing a full report describing the defect in writing within 7 days of discovery of the defect; and
 - the notification above provided to Endeavour Tools is prior to the expiry of the warranty period; and
 - the customer forwards the defective goods together with proof of purchase from Endeavour Tools or its authorised distributor at their expense, within 14 days of any request by Endeavour Tools to do so; and
 - the goods since the date of delivery to the customer have been properly maintained, store and housed and the goods have not been abused or modified; and
 - Endeavour Tools determines that there is a defect due to faulty workmanship or the use of a defective material.
- Endeavour Tools may replace or repair the defective good (or part thereof) or refund the purchase price of the defective good at its option.
- Endeavour Tools shall not be responsible for any loss or damage arising from or in any way connected with the use of the goods.
- To the maximum extent permitted by law, a claim in respect to a defective good shall not be permitted in the event that the goods have not been installed, used, maintained, or housed in a proper and workmanlike manner or in accordance with the usual standards or manufacturers specifications or instructions or if the goods have been modified, repaired or altered by any person apart from Endeavour Tools.

Notwithstanding our warranty terms above, our goods come with guarantees that cannot be excluded under the Australian Consumer Law. You are entitled to a replacement or refund for a major failure and for compensation for any other reasonably foreseeable loss or damage. You are also entitled to have the goods repaired or replaced if the goods fail to be of acceptable quality and the failure does not amount to a major failure.

The benefits under our warranty are in addition to other rights and remedies under a law in relation to the goods. Warranty provided by and warranty claims should be submitted to the address below.



endeavourtools
Innovation - Performance - Quality

Endeavour Tools PTY LTD
ABN 13 006 307 213

sales@endeavourtools.com.au
www.endeavourtools.com.au

50 Jellico Drive
Scoresby VIC 3179
Phone: +61 3 9753 3800
Fax: +61 3 9753 3933

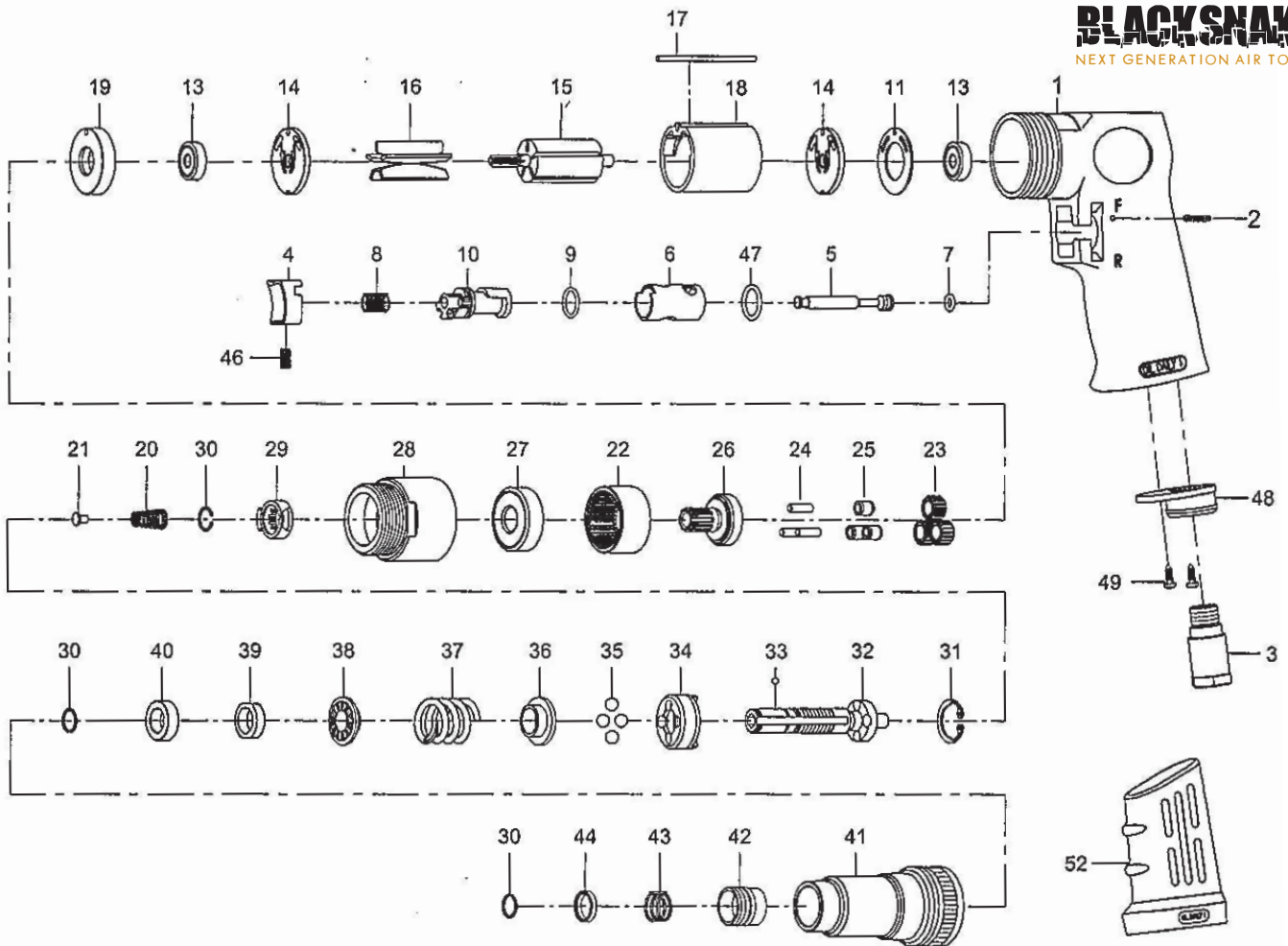
Suite 1/2, 12-18
Victoria Street East
Lidcombe NSW 2141
Phone: +61 2 9646 4222
Fax: +61 2 9646 5399

RMAX-SD

Screwdriver Adjustable Clutch



BLACK SNAKE
NEXT GENERATION AIR TOOLS



Index No.	Parts No.	Description	Index No.	Parts No.	Description
1	80201	Motor Housing	26	80226	Work Spindle
2	80202	Spring Pin (∅2.5*24L)	27	080227	Ball Bearing (6201Z)
3	70103	Air Inlet	28	80228	Clamp Nut
4	70104	Trigger	29	80229	Drive Dog
5	80205	Valve Stem	30	80230	Retaining Ring (3)
6	80206	Reverse Bushing	31	80231	Snap Ring (RTW-21)
7	70107	O-Ring (∅4.8*∅1.9)	32	80232	Cam Spindle
8	70108	Valve Spring	33	40145	Steel Ball (1/8")
9	80209	O-Ring (∅12*∅1.6)	34	80234	Clutch
10	80210	Reverse Lever	35	80235	Steel Ball (4) (1/4")
11	80211	Motor Gasket	36	80236	Thrust Washer
13	030113	Ball Bearing (2) (626ZZ)	37	80237	Spring
14	80214	End Plate (2)	38	80238	Washer
15	80215	Rotor	39	80239	Adjust Nut
16	80216	Rotor blades (5)	40	80240	Spacer
17	80217-13	Spring Pin (∅2.5*55L)	41	80241	Clutch Housing
18	80218-22	Cylinder	42	80242	Ball Retainer
19	80219	Spacer	43	80243	Spring
20	80220	Spring	44	80244	Washer
21	80221	Spring Guide	46	70935	Set Screw (M4*8L)
22	80222	Internal Gear	47	80247	O-Ring (∅13.8*∅2)
23	80223	Planet Gear (3)	48	70110	Exhaust Diffuser
24	30124	Pin (3) (∅4*13.8L)	49	40309	Screw (2) (TS2.9)
25	80225	Bushing (3)	52	82253-12	Rubber Grip