



# BLACK SNAKE

NEXT GENERATION AIR TOOLS

## Hydraulic Nutcert Kit

RMAX-NC



### Specifications

- Suits M3 - M8 Nutcerts
- Traction Power: 3500 Lbs (1589 kg)
- Weight: 0.8 kg

### Warranty Statement

Thank you for purchasing this Endeavour "Black Snake" Hydraulic Nutcert Kit. Endeavour Tools guarantees this tool against defects in material and workmanship for a period of 24 months from date of purchase. This warranty excludes consumable items in this kit.

- A. Endeavour Tools warrants the quality of these goods against defects in material and workmanship only.
- B. Defective goods shall only be replaced, repaired or the purchase price refunded if:
  - the customer notifies Endeavour Tools by providing a full report describing the defect in writing within 7 days of discovery of the defect; and
  - the notification above provided to Endeavour Tools is prior to the expiry of the warranty period;
  - the customer forwards the defective goods together with proof of purchase from Endeavour Tools or its authorized distributor at their expense, within 14 days of any request by Endeavour Tools to do so; and
  - the goods since the date of delivery to the customer have been properly maintained, store and housed and the goods have not been abused or modified; and
  - Endeavour Tools determines that there is a defect due to faulty workmanship or the use of a defective material.
- C. Endeavour Tools may replace or repair the defective good (or part thereof) or refund the purchase price of the defective good at its option.
- D. Endeavour Tools shall not be responsible for any loss or damage arising from or in any way connected with the use of the goods.
- E. To the maximum extent permitted by law, a claim in respect to a defective good shall not be permitted in the event that the goods have not been installed, used, maintained, or housed in a proper and workmanlike manner or in accordance with the usual standards or manufacturers specifications or instructions or if the goods have been modified, repaired or altered by any person apart from Endeavour Tools.

**Notwithstanding our warranty terms above, our goods come with guarantees that cannot be excluded under the Australian Consumer Law. You are entitled to a replacement or refund for a major failure and for compensation for any other reasonably foreseeable loss or damage. You are also entitled to have the goods repaired or replaced if the goods fail to be of acceptable quality and the failure does not amount to a major failure.**

**The benefits under our warranty are in addition to other rights and remedies under a law in relation to the goods.**

**Warranty provided by and warranty claims should be submitted to the address below.**



#### Warning:

Rated RPM Of The Accessory Used Must Exceed The Maximum Tool RPM Shown



Lubricate the air motor daily with quality air tool oil



For safety, performance and maximum durability of parts DO NOT operate this tool above 90 PSI.



**endeavourtools**  
Innovation - Performance - Quality

Endeavour Tools PTY LTD  
ABN 13 006 307 213

sales@endeavourtools.com.au  
www.endeavourtools.com.au

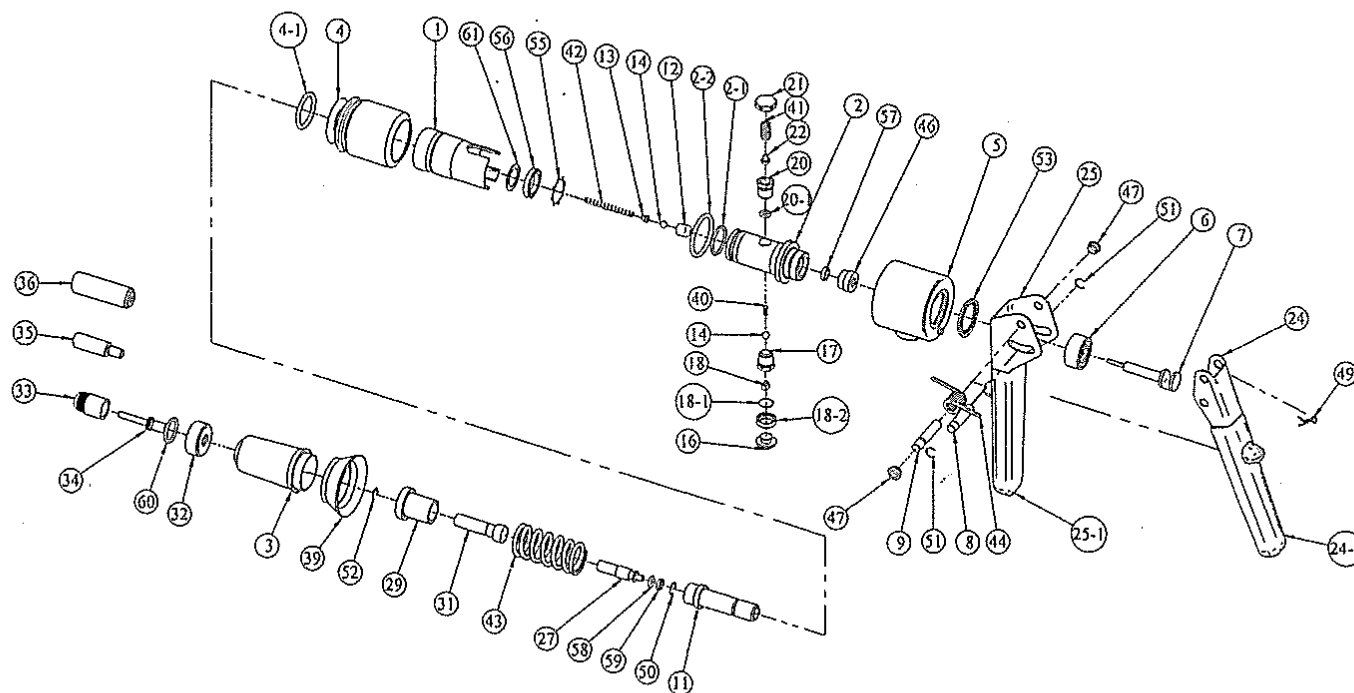
Suite 1/2, 12-18  
Victoria Street East  
Lidcombe NSW 2141  
Phone: +61 3 9753 3800 Phone: +61 2 9646 4222  
Fax: +61 3 9753 3933 Fax: +61 2 9646 5399

# RMAX-NC

## Hydraulic Nutcert Kit



**BLACK SNAKE**  
NEXT GENERATION AIR TOOLS



Part No.	Part Name	Q' ty	Part No.	Part Name	Q' ty
1	Hydraulic Housing	1	32	Adapter for Nose Piece	1
2	Hydraulic Piston	1	33	Nose Piece M3,4,5,6,8	1
2-1	O ring	1	34	Mandrel M3,4,5,6,8	1
2-2	Wear-Ring	1	35	Mandrel Case M4,5,6,8	1
3	Front Sleeve	1	36	Nose Piece RV-Bolt M4,5,6,8	1
4	Expansion Bellows	1	39	Cover	1
4-1	O ring	1	40	Pressure Spring	1
5	Encase	1	41	Pressure Spring	1
6	Connection	1	42	Pressure Spring	1
7	Tappet	1	43	Pressure Spring	1
8	Shaft for Tappet	1	44	Hinge Spring	1
9	Shaft for Leg Spring	1	46	Plain Bearing	1
11	Slide Piece	1	47	Plain Bearing GFM-0608-04	2
12	Valve Seat	1	49	R Pin	1
13	Spring Guide	1	50	Spring Ring DIN7993-8	1
14	Ball	2	51	Circlip	2
16	Trigger	1	52	Circlip	1
17	Valve Box	1	53	M20 Tooth Lock Washer	1
18	Ball Thrust Piece	1	55	Tooth Washer	1
18-1	NET	1	56	Lip Seal	1
18-2	Net Cover	1	57	Lip Seal	1
20	Valve Box	1	58	O ring	2
20-1	O ring	1	59	Backup Ring	1
21	Valve Cover	1	60	O ring	1
22	Spring Guide	1	61	Washer	1
24	Lever Left	1			
24-1	Lever Left Skin	1			
25	Lever Right	1			
25-1	Lever Right Skin	1			
27	Guide Sleeve	1			
29	Guide	1			
31	Adapter for the Mandrel	1			

AB1103