



BLACK SNAKE
NEXT GENERATION AIR TOOLS

Composite Belt Sander

RMAX-BELT20



Specifications

- 20mm x 520mm
- RPM: 16,000
- Avg Air Cons: 1.40 CFM
- Noise Level: 82 dBA
- Weight: 1.26 kg
- 1/4" BSP



9 321280 332904

For safety, performance and maximum durability of parts DO NOT operate this tool above 90 PSI.



Warning:

Rated RPM Of Any Accessory Used Must Exceed The Maximum Tool RPM Shown



Lubricate the air motor daily with quality air tool oil

Warranty Statement

Thank you for purchasing this Endeavour "Black Snake" belt sander. Endeavour Tools guarantees this impact wrench against defects in material and workmanship for a period of **24 months from date of purchase**.

- Endeavour Tools warrants the quality of these goods against defects in material and workmanship only.
- Defective goods shall only be replaced, repaired or the purchase price refunded if:
 - the customer notifies Endeavour Tools by providing a full report describing the defect in writing within 7 days of discovery of the defect; and
 - the notification above provided to Endeavour Tools is prior to the expiry of the warranty period; and
 - the customer forwards the defective goods together with proof of purchase from Endeavour Tools or its authorised distributor at their expense, within 14 days of any request by Endeavour Tools to do so; and
 - the goods since the date of delivery to the customer have been properly maintained, store and housed and the goods have not been abused or modified; and
 - Endeavour Tools determines that there is a defect due to faulty workmanship or the use of a defective material.
- Endeavour Tools may replace or repair the defective good (or part thereof) or refund the purchase price of the defective good at its option.
- Endeavour Tools shall not be responsible for any loss or damage arising from or in any way connected with the use of the goods.
- To the maximum extent permitted by law, a claim in respect to a defective good shall not be permitted in the event that the goods have not been installed, used, maintained, or housed in a proper and workmanlike manner or in accordance with the usual standards or manufacturers specifications or instructions or if the goods have been modified, repaired or altered by any person apart from Endeavour Tools.

Notwithstanding our warranty terms above, our goods come with guarantees that cannot be excluded under the Australian Consumer Law. You are entitled to a replacement or refund for a major failure and for compensation for any other reasonably foreseeable loss or damage. You are also entitled to have the goods repaired or replaced if the goods fail to be of acceptable quality and the failure does not amount to a major failure.

The benefits under our warranty are in addition to other rights and remedies under a law in relation to the goods. Warranty provided by and warranty claims should be submitted to the address below.



endeavourtools
Innovation - Performance - Quality

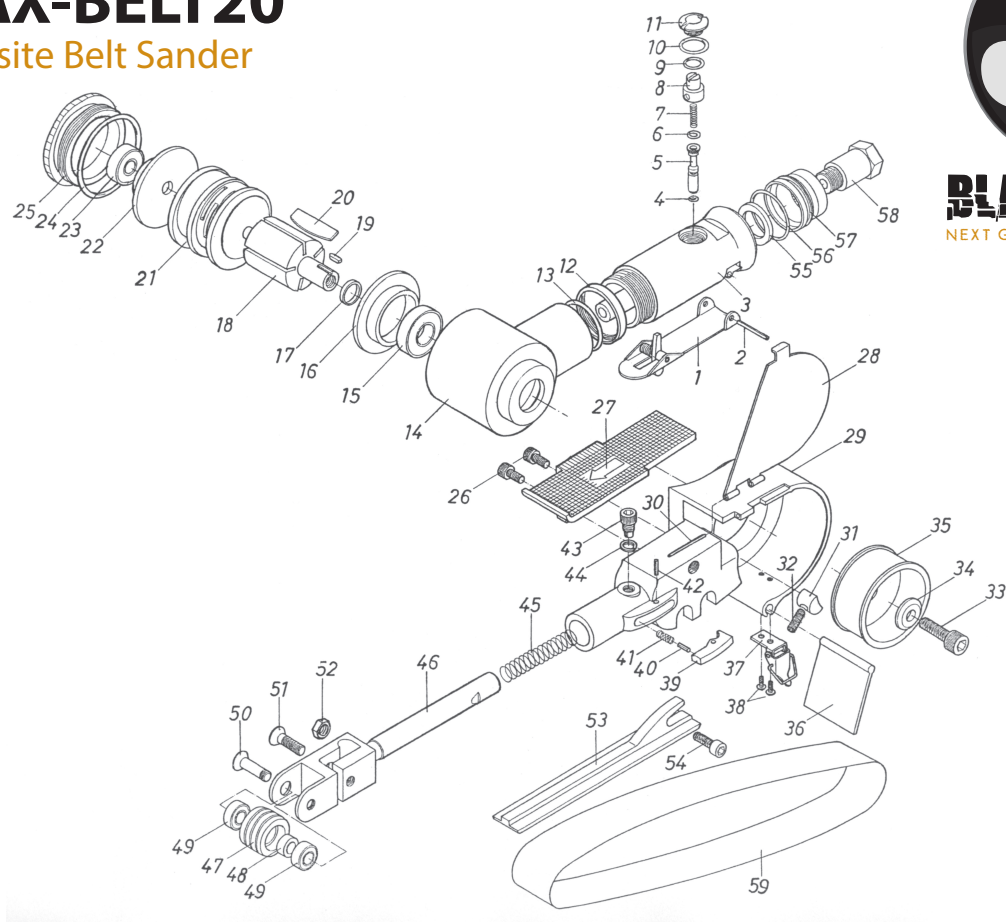
Endeavour Tools PTY LTD
ABN 13 006 307 213

sales@endeavourtools.com.au
www.endeavourtools.com.au

50 Jellico Drive
Scoresby VIC 3179
Phone: +61 3 9753 3800
Fax: +61 3 9753 3933

RMAX-BELT20

Composite Belt Sander



No.	Part No.	Description	Q'ty	No.	Part No.	Description	Q'ty
1	3101001	Throttle Lever	1	31	3101031	Lock Pin	1
2	3101002	Lever Pin	1	32	3101032	Set Screw	1
3	3101003	Motor Housing	1	33	3101033	Lock Nut	1
4	3101004	O-Ring	1	34	3101034	Washer	1
5	3101005	Valve Stem	1	35	3101035	Driver Pulley	1
6	3101006	O-Ring	1	36	3101036	Dust Cover	1
7	3101007	Valve Spring	1	37	3101037	Cover Latch	1
8	3101008	Air Controller	1	38	3101038	Cap Screw	2
9	3101009	O-Ring	1	39	3101039	Tension Bar	1
0	3101010	O-Ring	1	40	3101040	Lever Pin	1
11	3101011	Valve Screw	1	41	3101041	Spring	1
12	3101012	Lock Nut	1	42	3101042	Lever Pin	1
13	3101013	O-Ring	1	43	3101043	Screw	1
14	3101014	Housing	1	44	3101044	Washer	1
15	3101015	Ball Bearing	1	45	3101045	Tension Spring	1
16	3101016	Front End Plate	1	46	3101046	Tension Arm	1
17	3101017	Spacer	1	47	3101047	Idle Pulley	1
18	3101018	Rotor	1	48	3101048	Collar	1
19	3101019	Sunk Key	1	49	3101049	Ball Bearing	2
20	3101020	Rotor Blade	5	50	3101050	Screw	1
21	3101021	Cylinder	1	51	3101051	Screw	1
22	3101022	Rear Plate	1	52	3101052	Lock Nut	1
23	3101023	Ball Bearing	1	53	3101053	Shoe	1
24	3101024	O-Ring	1	54	3101054	Screw	1
25	3101025	Motor Nut	1	55	3101055	Sliencer	1
26	3101026	Set Screw	2	56	3101056	O-Ring	1
27	3101027	Finger Plate	1	57	3101057	Air Deflector	1
28	3101028	Wheel Cover Lid	1	58	3101058	Air Inlet	1
29	3101029	Wheel Cover Incl. Spacer	1	59	3101059	Grinding Belt	1
30	3101030	Roll Pin	1				