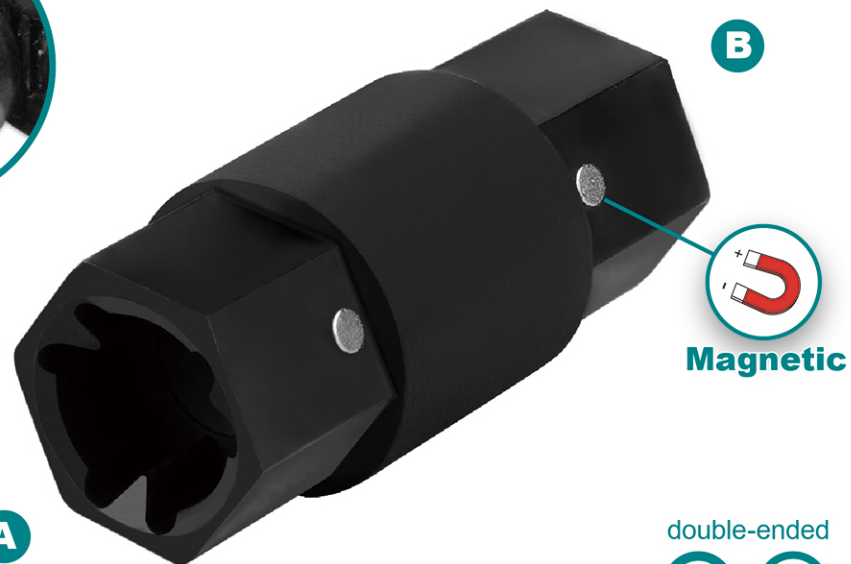


ET8815

Special Socket for Air Intake Hose Clamp



For removal, replacement or tightening the safety clamp in the intake area, near the throttle flap.



A. For clamp size \varnothing 30~45 mm



B. For clamp size \varnothing 60~80 mm

Suitable for H4Bt 0.9L petrol turbo engine form 2012

Smart Fortwo	Smart Forfour	Renault Twingo	Renault Clio
Renault Captur	Dacia Sandero	Dacia Logan	Nissan Micra