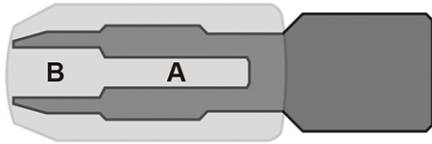


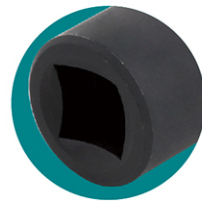
ET8029

Adjustable Tap Socket (M4 ~ M14)

Designed for use with **taps**, **reamers**, **screw extractors** and other tools with a **square shank**.



19 mm 3/8" dr.



- Two sections design fits common taps from **M4 ~ M14**.
- Fits all **3/8"** square drive tools.
- For use in tight workspaces.