

ET6797A

1,400A Peak CCA

Jump Starter | Power Bank

Instruction Manual



WARNING ⚠ Read all safety warnings and instructions. Failure to follow warnings and instructions may result in electric shock, fire and / or serious injury. FOR 12V AUTOMOTIVE BATTERIES ONLY

READ THIS MANUAL CAREFULLY BEFORE USE | SAVE THESE INSTRUCTIONS

Thank you for purchasing this Endeavour multi-function portable jump starter. This jump starter is designed to assist with starting your vehicle, when it is not able to start normally due to the battery condition. This jump starter contains a high quality lithium polymer battery, providing a peak starting current up to 1,400A. This jump starter must only be used with 12V automotive batteries. Before using this product, please read the user manual carefully and retain the manual for future reference.

I. IMPORTANT SAFETY WARNINGS

- This product must only be used with the supplied jump start cables. You must NOT use any third party jump start cables as this may cause damage to the battery, and other risks such as fire /endanger the safety of users.
- Correctly connect the product to the positive and negative pole of the car battery. Do not allow the positive and negative poles of the cable to touch each other. This may cause sparking, and result in a safety hazard /cause short circuiting of the unit.
- Vehicles that have on-board computerised systems which do not meet the ISO 16750 standard may be damaged if vehicle battery is jump started. Before jump starting, read the vehicle's owner's manual to confirm that external starting assistance is suitable.

※ISO 16750 is an ISO standard which provides guidance regarding environmental conditions commonly encountered by electrical and electronic systems installed in automobiles.

- Jump start procedures should only be performed in a safe, dry, well-ventilated area.
- This unit must only be used on vehicles with a 12 volt DC battery system. DO NOT connect to a 6 volt or 24 volt battery system.
- This unit is not designed to be used as a replacement for a vehicle battery. Do NOT attempt to use this unit to operate a vehicle that does not have a battery installed.
- Excessive engine cranking can damage a vehicle's starter motor. When using the jump start function, use for 3 seconds only. Allow 1 minute for the unit to cool before attempting a further jump start. Disconnect the cable from the unit immediately upon the engine starting. If the vehicle will not start, look for other problems that may need to be corrected first.

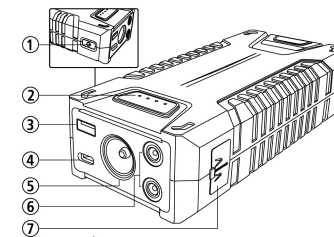
II. OTHER WARNINGS

- Do not heat the unit, or dispose of it in fire, water or other liquids. Keep the unit away from high temperatures. Do not expose the unit to direct sunlight.
- Do not open this unit. Opening may break or damage the components and will void the warranty.
- Do not drop, place heavy objects on, or allow any strong impact to this unit. This may cause damage to the battery.
- Do not allow children to use this unit, especially because the device has large current discharge characteristics.
- This unit contains a lithium polymer battery. Always comply with transport and safety regulations in the use and disposal of such batteries.
- Do not charge the unit beyond the required time. Disconnect the unit when fully charged. Use the unit properly to avoid electronic shock.

III. PRODUCT SPECIFICATIONS

Capacity	2000mAh, 3.7V/74Wh
Dimensions(LWH)	182x85x45mm
Weight	640g
Built-in Battery	High Rate Discharge Lithium Polymer Batteries
Input Recharging	Type-C PD60W
Fully Charged Time	About 1.5 hours
ECS Output	Support 12V Battery System Vehicle
Output	USB-A:QC18W; Type-C:PD60W; DC: 12-16V/15A(Max)
Bulb Type	Ultra bright LED light/SOS/Blink
Peak amps	1400A
Operaton temperature range	-20 C -60 C
Lifecycle	>1000 times
Safety Technology	MultiSafety Protection V2.0
Package include	1 x Jump starter 1 x Cigarette Lighter adapter 1 x Type-C cable 1 x Battery clamps 1 x User manual

IV. PRODUCT OVERVIEW



▲Figure1. Product interfaces

- | | |
|--------------------------------------|--|
| ① ON/OFF BUTTON / FLASHLIGHT CONTROL | ⑤ FLASHLIGHT / SOS / LIGHT / BLINK |
| ② BATTERY CAPACITY INDICATOR | ⑥ DUAL DC OUTPUT |
| ③ USB-A OUTPUT | ⑦ ECS OUTPUT |
| ④ Type-C INPUT & OUTPUT | Connect the jump start cable to this connector. Supports 12V vehicle battery systems ONLY. |

Key Functions Description

⏻ /MODE: Power ON/OFF/LED light modes switch

Power ON: Press the ⏻ button on the side of the unit to switch on. The unit will automatically turn off when not used.

LED light mode switch: Press the ⏻ button for 3 seconds to turn on the flashlight, then single press the button to switch modes. There are 3 modes available: flashlight, SOS, blinking.

V. PRODUCT INSTRUCTION

1. Introduction

When the car cannot start due to battery power loss or low temperature, this product can be used to start the car.



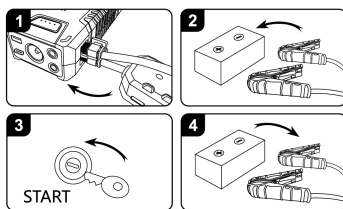
This product **MUST** only be used with 12V car batteries. DO NOT use on 6v or 24V battery systems! Before using this product, carefully check that your vehicle battery voltage is 12V.

Excessive engine cranking can damage a vehicle's starter motor. When using the jump start function, use for 3 seconds only. Allow 1 minute for the unit to cool before attempting a further jump start. Disconnect the cable from the unit immediately upon the engine starting. Do not attempt to start more than five (5) times. If the vehicle will not start, look for other problems that may need to be corrected first.

2. How to use this jump starter to start a vehicle

- Open the dust cover on the jump start battery. Insert the jump start cable into the ECS dock connector.
- Then attach the red alligator clamp onto the positive electrode of the car battery, and the black alligator clamp onto the negative electrode of the car battery.
- After this, the jump start cable will activate automatically. The green / red blinking indicator light on the Safety Box of the jump start cable will turn to a solid green. Please attempt to start the car immediately. The jump start cable will deactivate if the user doesn't start the car within 60 seconds. If this occurs, the user will need to disconnect / reconnect the clamps to the vehicle battery, to reactivate the jump start cable.
- Once the car has been started, remove the jump start clamps from the car battery carefully, and then unplug the jump start cable from the ECS Dock immediately thereafter.

Attention: When attaching / removing the jump start clamps from the car battery, DO NOT allow the positive / negative clamps to touch. Otherwise this may cause electric sparks, and trigger the short circuit protection. If the short circuit protection is triggered, the indicator light on the Safety Box of the jump start clamps will turn red. Disconnect the clamps from the product immediately to reset the safety protection. Fix any incorrect usage before using again.

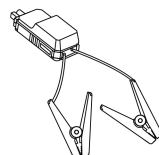


▲Figure 2. Application method

Note: The product will enter into protection mode if it is incorrectly used. A solid red light will appear on the Safety Box.

BATTERY CLAMPS INDICATOR:

- Green / Red Light Blinks: Standby mode
- Green Light On: Ready to jump start
- Red Light On / Alarm: Over Voltage / Low Voltage / Reverse Polarity / Reverse Charging / Short Circuit / Over Current / Over Temperature / Over Time Protection



Intelligent Jump Start Cable

3. Use in low temperature conditions

If this product is attempted to be used in extremely low temperature conditions (below zero degrees Celsius), the chemical activity of lithium battery will decrease due to the temperature affect, output power will drop and, emergency starting may fail due to insufficient output power.

Because the product temperature will naturally rise when it is used, the chemical activity of lithium battery will slowly recover, as well as the output power. You can try again to start the car (subject to the conditions listed above).

- After each use, please recharge the battery, so as to have a higher power output to offset the low temperature effects.
 - In a low temperature environment, the first starting attempt may fail. You may need to try again, once the battery has warmed up.
 - If the battery reserve is not enough (less than 3 bars), in a low temperature environment, it may be unable to provide sufficient power to start the car. If you still cannot start the car within the specified parameters, please stop using this product, check for other problems, or contact emergency rescue instead.
- 4. Using this product as a Power Bank**
- USB Outputs:** this product has fast charge USB-A and Type-C outputs to charge other electronic items, such as smartphones, tablets, laptops etc.
- DC Outputs:** this product also has DC5521 outputs to charge DC devices, such as DC lights, DC air compressor etc.

5. How to charge this unit

- Use the Type-C port to recharge this unit. A Type-C charging cable is provided with this unit, and can be used with any compatible wall charger (not supplied).
- Once this jump start unit is fully charged, all 4 battery level indicator lights will be on.
- Unplug the cable as soon as the jump start unit is charged. Do not leave it connected to the charging cable.

Note: When using this product for the first time, please make sure that the jump starter is fully charged.

VI. PRODUCT APPLICATION SKILLS

- Before using this unit to jump start the car, turn off electronic equipment on the car, such as air conditioning, lights, navigation, radio, so as to achieve a better starting effect.
- This jump starter contains a high quality lithium battery, it has no memory effect, is high-capacity, and is durable. However, we still recommend you to charge in the range of 10 °C ~ 30 °C so as to obtain the optimal charging capacity.
- If the device is not to be used for an extended period, please disconnect all cables and store securely.
- When using as a Power Bank, some portable devices may need to be set in charge mode to charge. Please refer to their product manual for more information.
- In order to extend the product life of the lithium battery, it is best to charge within 3 months, and to charge at least once every 6 months.
- After turning on the unit, if there is no output the product will automatically shut down within five (5) seconds, to save energy.

Product Recycling

Always return your used electronic products, batteries, and packaging materials to dedicated collection points. This product contains a lithium battery which should be transported / disposed of in accordance with applicable regulations.

Battery Information

Your device has an internal non-removable rechargeable lithium battery. Do not attempt to remove the battery, as you may damage the device, and void the warranty. This battery can be charged and discharged over 500 times, but it will eventually wear out.

WARRANTY STATEMENT

Endeavour Tools guarantees this unit against defects in material and workmanship for a period of twelve (12) months from the date of purchase.

This warranty excludes consumable items in the kit.

- Endeavour Tools warrants the quality of these goods against defects in material and workmanship only.
- Defective goods shall only be replaced, repaired or purchase price refunded if:
 - The customer notifies Endeavour Tools by providing a full report describing the defect in writing within 7 days of the discovery of the defect;
 - The notification above provided to Endeavour Tools is prior to the expiry of the warranty period;
 - The customer forwards the defective goods together with proof of purchase from Endeavour Tools or its authorised distributor at their expense, within 14 days of any request by Endeavour Tools to do so; and
 - The goods since the date of delivery to the customer have been properly maintained, stored and housed and the goods have not been abused or modified or the case opened.
- Endeavour Tools may replace or repair the defective good (or part thereof) or refund the purchase price of the defective good at its option.
- Endeavour Tools shall not be responsible for any loss or damage arising from or in any way connected with the use of the goods.
- To the maximum extent permitted by law, a claim in respect to a defective good shall not be permitted in the event that the goods have not been installed, used, maintained, or housed in a proper and workmanlike manner or in accordance with the usual standards or manufacturers specifications or instructions or if the goods have been modified, repaired or altered by any person apart from Endeavour Tools.

Notwithstanding our warranty terms above, our goods come with guarantees that cannot be excluded under the Australian Consumer Law. You are entitled to a replacement or refund for a major failure and for compensation for any other reasonably foreseeable loss or damage. You are also entitled to have the goods repaired or replaced if the goods fail to be of acceptable quality and the failure does not amount to a major failure.

The benefits under our warranty are in addition to other rights and remedies under law in relation to the goods.

0723 VER1.0

