

With DPF Regen!



Heavy Duty Code Reader

Full Colour Heavy Duty Truck Code Scanner with Extensive Caterpillar Coverage and Generic OBDII

The all new HD CODE II adds a sleek design and colour screen. The HD CODE II boasts extensive Heavy, Medium & Light duty truck and **CATERPILLAR** coverage that includes CAT Power Equipment, CAT Construction and CAT Industrial. OBDII is also covered. With its easy to use interface and lightning fast navigation, diagnosing and repairing trucks and machinery has never been this easy or fast.

FEATURES & BENEFITS

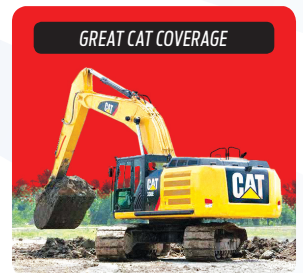
- » Read/Clear Codes
- » Capture Screenshots
- » View/Graph Live Data
- » Heavy, Medium & Light Truck coverage for J1587, J1708 & J1939 Protocols
- » Access Engine, Transmission & Brakes
- » Automatic Protocol Search
- » Added capabilities for Caterpillar, International, Hino, Isuzu & Hybrid HD Trucks
- » Vehicle Information
- » Code Look-up
- » Comfortable Ergonomic Design
- » Easy to Read Large screen
- » Easy to Operate Push Button Design
- » Lifetime free updates
- » DPF regen on CAT, Detroit, Cummins, Fuso

CATERPILLAR COVERAGE: CAT Truck/Bus, CAT Construction, CAT Power Equipment, CAT Agricultural, CAT Industrial

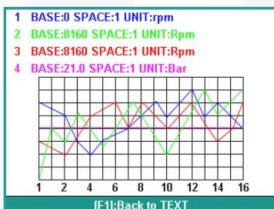
ADDITIONAL LIGHT VEHICLE FUNCTIONS:

Works with OBDII compliant US, European & Asian vehicles • Reset Monitors • Retrieve generic codes (P0, P2, P3, B0, C0, U0), manufacturer specific codes (P1, P3, U1) as well as pending codes • Supports CAN (Controller Area Network), Mode 6 & all other current OBDII Protocols & more!

ADDITIONAL DIESEL VEHICLE FUNCTIONS: Heavy, Medium & Light Truck coverage featuring "Automatic Protocol Search" • Heavy-Duty J1587/J1708 and J1939 CAN Engine, Transmission/ ABS Coverage • View live vehicle data such as: Engine Speed, Engine ECU Temperature, Percent Acceleration Pedal Position, Engine Intercooler Temperature, Engine Coolant Temperature, Ambient Air Temperature, & Air Inlet Temperature & more!



CONNECTORS INCLUDED



GRAPH LIVE DATA

Main variables		
1	Engine speed	0 rpm
2	AUTO input speed (measured)	8160 Rpm
3	AUTO output speed (measured)	8160 Rpm
4	Selected pressure	21.0 Bar
		Graph Save Compare

VIEW LIVE DATA

