

PRESSURE / VACUUM PUMP AND BRAKE BLEEDING KIT



1. FEATURES

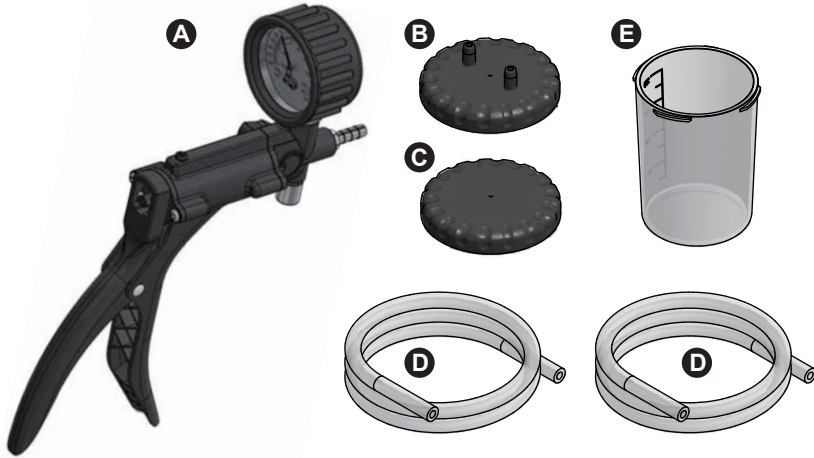
2. SPECIFICATIONS

3. INSTRUCTIONS

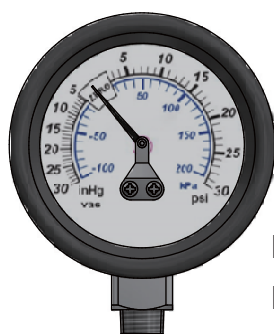
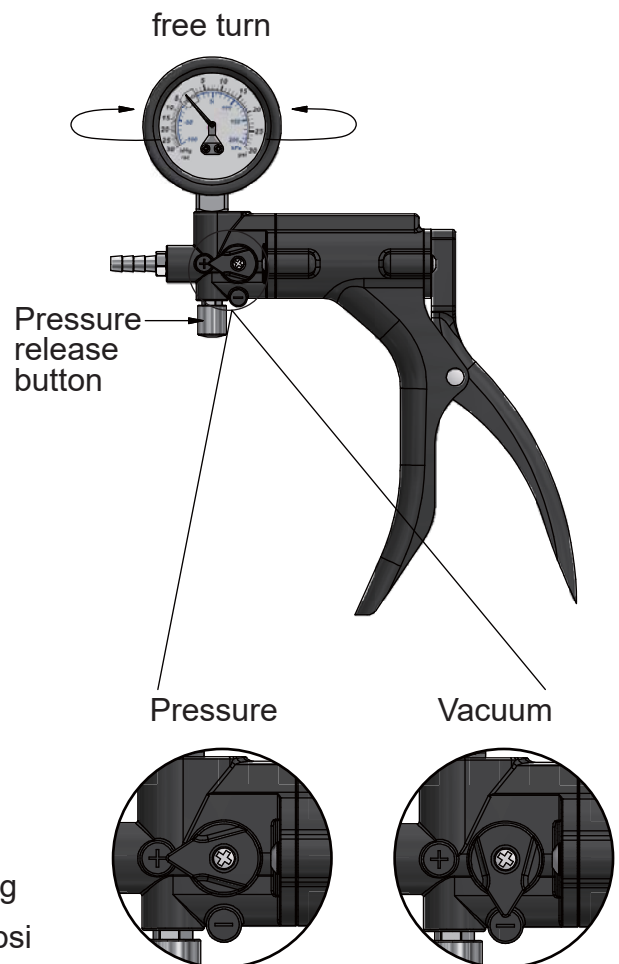
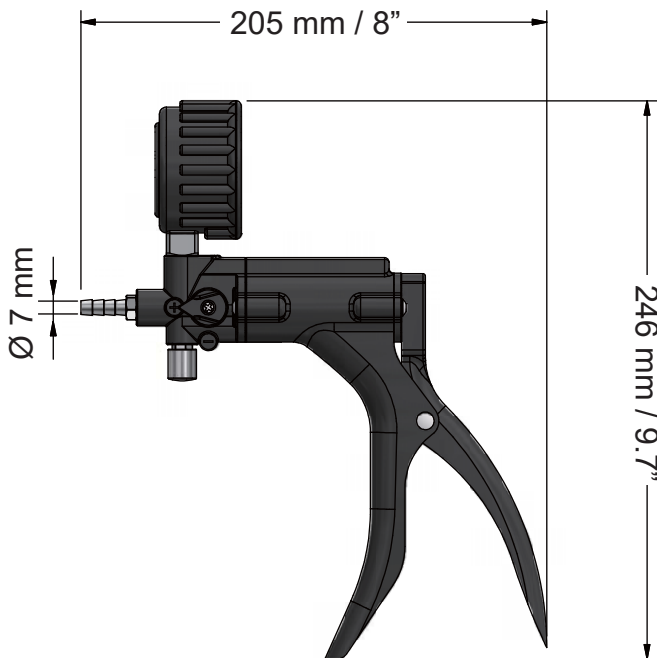
1. FEATURES

- Kit for testing and diagnosing most systems that require pressure or vacuum to operate, for example, intake manifold vacuum, fuel pressure valve, EGR, air conditioning, and forced-air induction systems
- Pump with a sturdy nylon case and with a gauge that can test both pressure and vacuum
- Accessories include a reservoir bottle, caps, hoses, and adapters for one-person brake bleeding
- Provided with a pack of adapters for brake bleeder valves and pressure/vacuum tests

2. SPECIFICATIONS

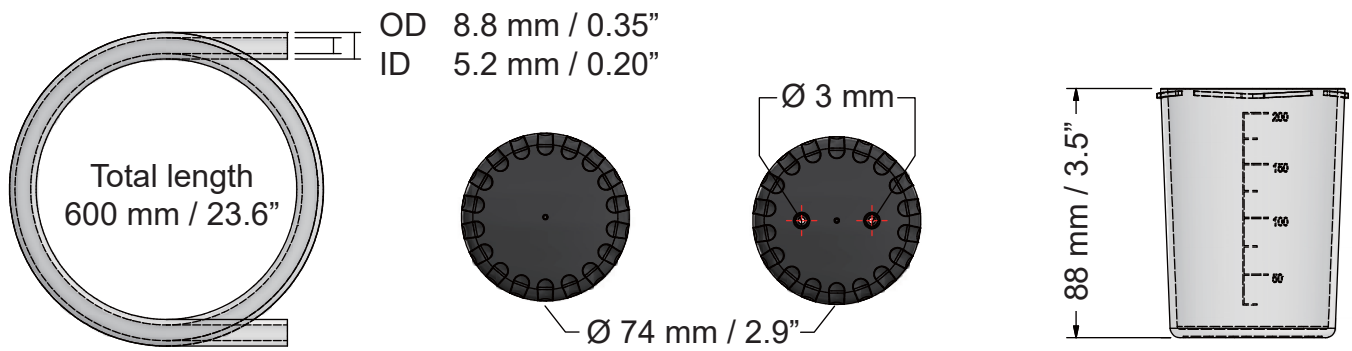


No	Descriptions
A	Pressure-vacuum pump
B	Lid for fluid transfer
C	Lid for storage
D	Connection hoses (2 pcs)
E	200 ml reservoir bottle

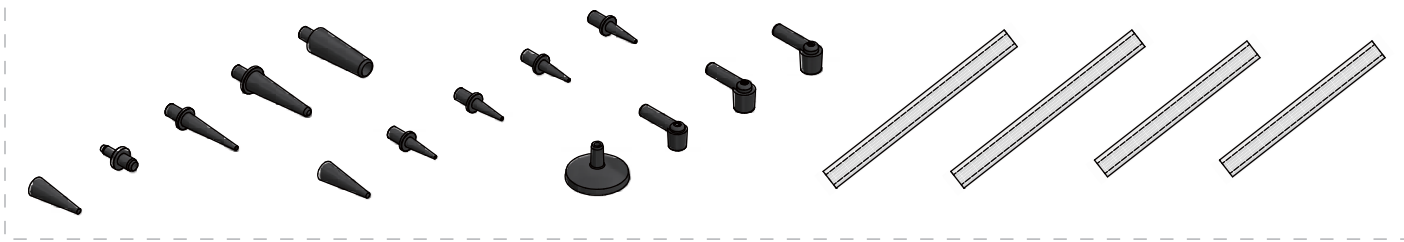


$\varnothing 61$ mm / 2.4"

Maximum Vacuum: Approx. 25 inHg
Maximum Pressure: 200 kPa / 30 psi



Adapter Kit



3. INSTRUCTIONS



CAUTION



- Always read the instructions carefully before using the tool
- Ensure the working area has adequate lighting
- Keep children and unauthorized persons away from the working area
- Keep working area clean and tidy, dry and free from unrelated materials
- DO NOT allow untrained persons to use this tool kit
- Always wear eye protection that meets OSHA and ANSI Z87.1 standards
- Always wear gloves when working with the tool
- Always wear ear protection
- Disposal: Customers should follow local regulations to handle used/waste parts

PRESSURE TEST (MAP sensor)

- 1 Turn the gauge to + for pressure tests (Fig 1)
- 2 Disconnect the pressure line between the sensor and the engine
- 3 Choose a suitable adapter and/or a hose from the adapter kit to connect to the pressure line (Fig. 2) and the pump.
- 4 Press the handle continuously and read the pressure value on the gauge (Fig. 3)
- 5 Refer to automotive manufacturer's service manual for standard values.
- 6 Press pressure release button to release pressure before disconnecting the pump from the engine.

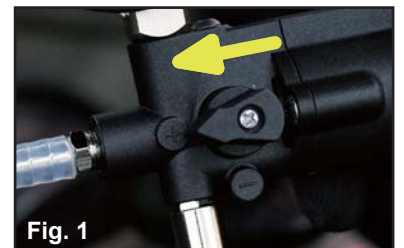


Fig. 1



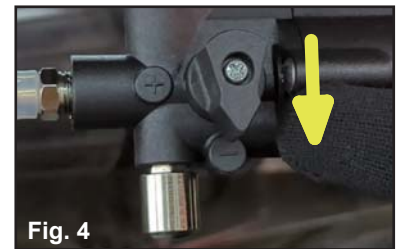
Fig. 2



Fig. 3

VACUUM TEST (Common Rail Pressure Regulator)

- 1 Turn the gauge to - for vacuum tests (Fig 4)
- 2 Disconnect the vacuum line from the regulator
- 3 Choose a suitable adapter and/or a hose from the adapter kit to connect to the vacuum line and the pump to connect to the vacuum line and the pump
- 4 Press the handle continuously and read the vacuum value on the gauge (Fig. 5)
- 5 Refer to automotive manufacturer's service manual for standard values
- 6 Press pressure release button (Fig. 6) to release vacuum before disconnecting the pump from the engine



BRAKE BLEEDING

- 1 Turn the gauge to - for vacuum function
- 2 Find a suitable adapter from the adapter kit to the brake bleeder valve
- 3 Connect one soft hose to the pump on one end and to the fluid transfer lid on the other end, and another soft hose to the fluid transfer lid on one end and to the brake bleeder valve adapter on the other end (Fig. 7)
- 4 Connect the brake bleeder valve adapter to the brake bleeder valve on the car (Fig. 8)
- 5 Operate the vacuum pump to extract old brake fluid (Fig. 9).

