

ET2183A

HYDRAULIC STEERING SYSTEM PRESS TOOL SET (47 PCS)



1. FEATURES

2. SPECIFICATIONS

3. INSTRUCTIONS

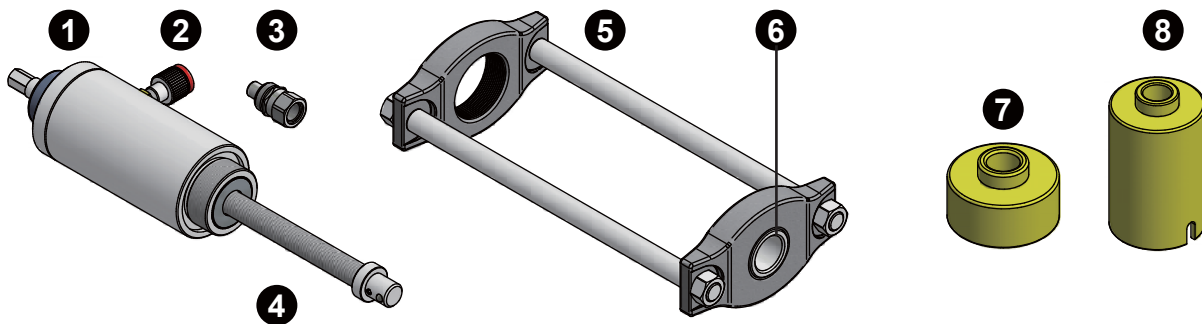


endeavour

1. FEATURES

- For removing and installing bushings and bearings
- Hydraulic cylinder provides energy- and time-saving removing and installing works
- Includes one M20 × P2.5 spindle
- Sleeve sizes: 18-60 mm (ID) and 26-68 mm (OD) with 2 mm increments
- Universal application

2. SPECIFICATIONS



1	Hydraulic cylinder 18.2 ton
2	Hydraulic tube adapter
3	Male connector for ram
4	M20 × P2.50 spindle and fixing nut
5	Tool frame
6	Tool assembly fixing nut
7	Short socket 40 mm in length (21 pcs)
8	Long socket 110 mm in length (21 pcs)

Socket sizes OD × ID mm	Ø26 × 18 mm
	Ø28 × 20 mm, Ø30 × 22 mm, Ø32 × 24 mm
	Ø34 × 26 mm, Ø36 × 28 mm, Ø38 × 30 mm
	Ø40 × 32 mm, Ø42 × 34 mm, Ø44 × 36 mm
	Ø46 × 38 mm, Ø48 × 40 mm, Ø50 × 42 mm
	Ø52 × 44 mm, Ø54 × 46 mm, Ø56 × 48 mm
	Ø58 × 50 mm, Ø60 × 52 mm, Ø62 × 54 mm
	Ø64 × 56 mm, Ø66 × 58 mm, Ø68 × 60 mm

3. INSTRUCTIONS

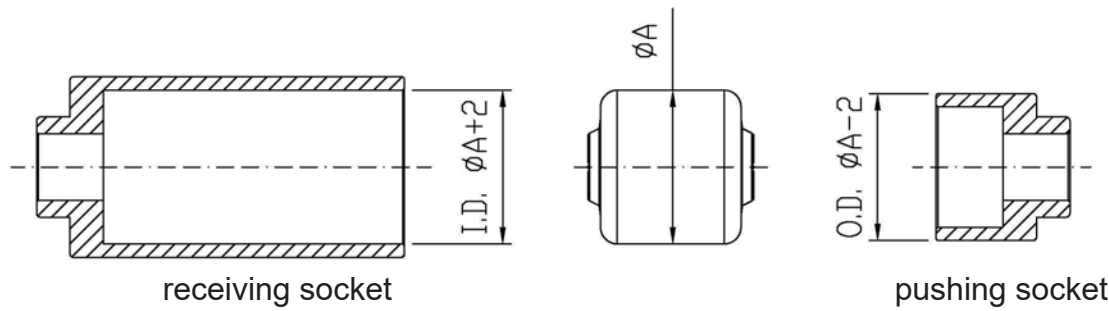


CAUTION



- Always read the instructions carefully before using the tool
- Work with extra caution on hydraulic cylinder
- Ensure the sockets are installed in a straight line on a control arm
- DO NOT keep using the hydraulic cylinder if hydraulic fluid leaks
- Clean any hydraulic fluid leaks immediately
- Ensure the working area has adequate lighting
- Keep children and unauthorized persons away from the working area
- Keep working area clean and tidy, dry and free from unrelated materials
- DO NOT allow untrained persons to use this tool kit
- Always wear eye protection that meets OSHA and ANSI Z87.1 standards
- Always wear gloves when working with the tool
- Always wear ear protection
- Disposal: Customers should follow local regulations to handle used/wasted parts

CHOOSE SUITABLE SIZED SOCKETS



When removing an old bushing from a control arm, or installing a new bushing into a control arm, two sockets are required. One acts as a pushing socket, the other as a receiving socket. The outer diameter (OD) of the pushing socket should be 2 mm smaller than the bushing. The inner diameter (ID) of the receiving socket should be 2 mm larger than the bushing.

REMOVING AN OLD BUSHING

- 1 Choose suitable-sized (one short and one long) pushing and receiving sockets.
- 2 Connect the sockets, control arm, hydraulic cylinder, tool frame, and fixing nut together as Fig. 1.
- 3 Connect a foot pump with hydraulic tube to the hydraulic cylinder.
- 4 Press the foot pump to activate the hydraulic cylinder, and the bushing can be removed accordingly (Fig. 2).



INSTALLING A NEW BUSHING

- 1 Choose suitable-sized (one short and one long) pushing and receiving sockets.
- 2 Connect the sockets, control arm, hydraulic cylinder, tool frame, and fixing nut together as Fig. 3.
- 3 Connect a foot pump with hydraulic tube to the hydraulic cylinder.
- 4 Press the foot pump to activate the hydraulic cylinder, and the bushing can be installed accordingly (Fig. 4).

