

ET 2026

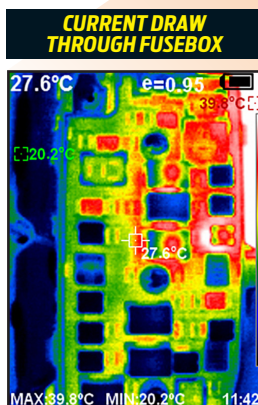
Thermal Imaging Camera

Provides real time thermal imaging / surface temperature measurement. This unit features a digital camera to pinpoint the test area, over which a thermal image is overlaid. Ideal for automotive, construction and electrical. Eg. overheating wiring, hot / cold spots in brakes, wheel bearings etc.

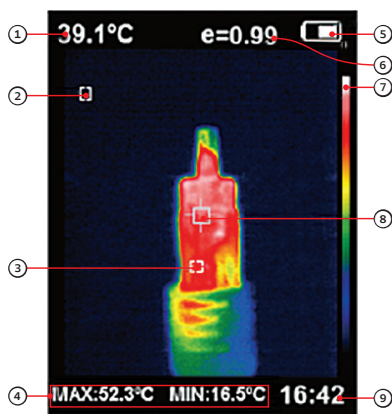


FEATURES & BENEFITS

- » Save images, and transmit by USB for printing / emailing.
- » The radiation coefficient may be adjusted to increase the measurement accuracy of objects with a reflective surface.
- » Cursors guide the users to the areas with highest and lowest temperature on the thermal images.
- » Temperature range: -20°C to 300°C
- » Built in rechargeable 1850mAh battery

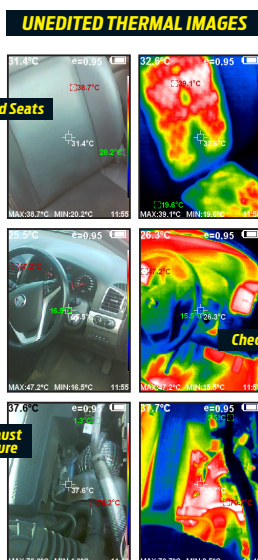


KEY DESCRIPTION



- ① Central point temperature
- ② Cold point temperature cursor
- ③ Hot point temperature cursor
- ④ Maximum value/minimum value of field temperature
- ⑤ Battery power
- ⑥ Current emissivity
- ⑦ Colour code
- ⑧ Temperature cursor at central point
- ⑨ Time

1 YEAR AUSTRALIAN WARRANTY



SPECIFICATIONS

DISPLAY SCREEN	3.2" FULL ANGLE TFT DISPLAY SCREEN
INFRARED IMAGE RESOLUTION	220*160
VISIBLE IMAGE RESOLUTION	300,000 pixels
FIELD ANGLE / SHORTEST FOCUS LENGTH	27°x35° / 0.5m
THERMAL SENSITIVITY	0.07°C
TEMPERATURE MEASUREMENT RANGE	-20°C to 300°C (-4°F to 572°F)
MEASUREMENT ACCURACY	±2% or ±2°C
EMISSIVITY	Adjustable from 0.1 to 10.0
FRAME RATE OF THERMAL IMAGES	9Hz
WAVELENGTH COVERAGE	8-14um
FOCUS MODE	Fixed
CLOUR PALETTE	Rainbow, iron oxide red, cold colour, black & white, white & black
VIEW OPTION	The integration of thermal image with 25% step length and visible image
STORAGE MEDIUM	Built-in 4GB
FILE FORMAT	JPG
BATTERY	Built-in rechargeable 1850mAh lithium battery
POWER SUPPLY	Micro USB 2.0
AUTOMATIC POWER-OFF TIME	Selectable: 5 minutes / 20 minutes / not power off automatically
PRODUCT DIMENSIONS	90mm*105mm*223mm
PRODUCT WEIGHT	389g
WORK TEMPERATURE	0°C to 45°C
STORAGE TEMPERATURE	-40°C to 60°C
RELATIVE HUMIDITY	< 85% RH

ET 2027

Pocket Sized Thermal Imaging Camera

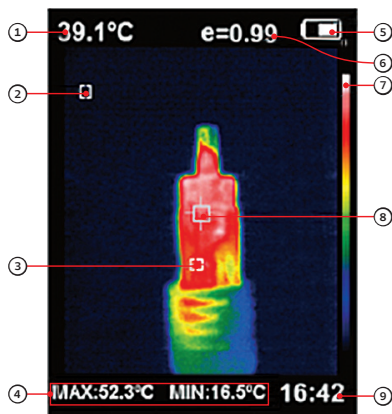
A full featured compact unit small enough to fit in your pocket. Built in visible light camera, over which a thermal image is overlaid. Upload images to share with customers. Provides real time thermal imaging / surface temperature measurement. The traditional infrared thermometer must measure every component individually while it is not necessary when using an infrared imaging camera, thus saving time.



FEATURES & BENEFITS

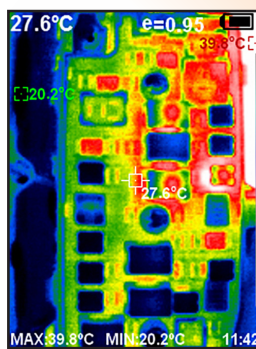
- » The radiation coefficient may be adjusted to increase the measurement accuracy of objects with a reflective surface.
- » Cursors guide the users to the areas with highest and lowest temperature on the thermal images.
- » 3.7V rechargeable battery

KEY DESCRIPTION

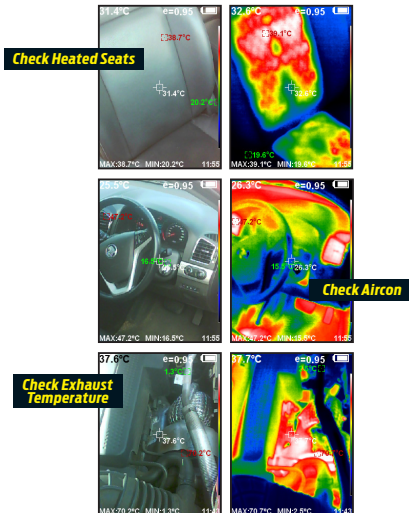


- ① Central point temperature
- ② Cold point temperature cursor
- ③ Hot point temperature cursor
- ④ Maximum value/minimum value of field temperature
- ⑤ Battery power
- ⑥ Current emissivity
- ⑦ Colour code
- ⑧ Temperature cursor at central point
- ⑨ Time

CURRENT DRAW THROUGH FUSEBOX



UNEDITED THERMAL IMAGES



SPECIFICATIONS

DISPLAY SCREEN	3.2" FULL ANGLE TFT DISPLAY SCREEN
INFRARED IMAGE RESOLUTION	220*160
VISIBLE IMAGE RESOLUTION	640x480(300,000 pixel)
FIELD ANGLE/ SHORTEST FOCUS LENGTH	35°x26°/4.0mm
THERMAL SENSITIVITY	0.07°C
TEMPERATURE MEASUREMENT RANGE	-20°C to 300°C (-4°F to 572°F)
MEASUREMENT ACCURACY	±2% / ±2°C
EMISSIVITY	Adjustable from 0.01 to 1.0
FRAME RATE OF THERMAL IMAGES	9Hz
WAVELENGTH COVERAGE	8-14um
FOCUS MODE	Fixed
COLOR PALETTE	Rainbow, iron oxide red, cold color, black & white, white & black
VIEW OPTION	The integration of thermal image with 25% step length and visible image.
STORAGE MEDIUM	Built-in 3GB
FILE FORMAT	JPG
USB	Micro USB
POWER SUPPLY	Built-in rechargeable 1800mAh lithium battery
AUTOMATIC POWER-OFF TIME	Selectable: 5 minutes/20 minutes/ not power off automatically
PRODUCT SIZE (LENGTH * WIDTH * HEIGHT)	140mm*80mm*28mm
PRODUCT WEIGHT	208g
WORK TEMPERATURE	0°C to 45°C
STORAGE TEMPERATURE	-40°C to 60°C
RELATIVE HUMIDITY	< 85%RH