

ET2026B

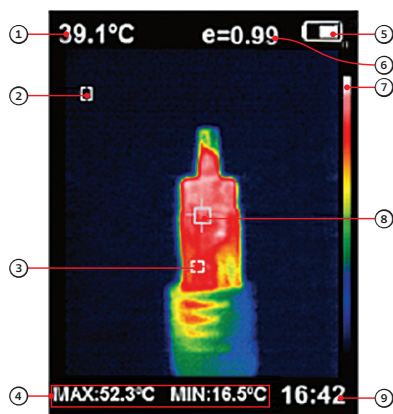
Thermal Imaging Camera

Provides real time thermal imaging / surface temperature measurement. This unit features a digital camera to pinpoint the test area, over which a thermal image is overlaid. Ideal for automotive, construction and electrical. Eg. overheating wiring, hot / cold spots in brakes, wheel bearings etc.

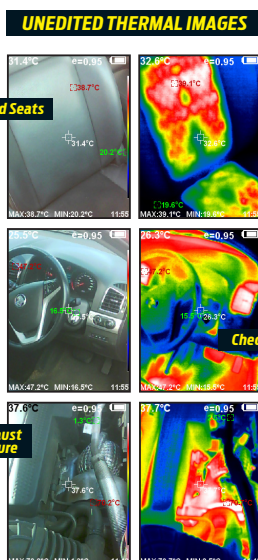
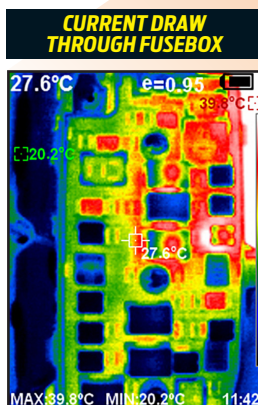
FEATURES & BENEFITS

- » Save images, and transmit by USB for printing / emailing.
- » The radiation coefficient may be adjusted to increase the measurement accuracy of objects with a reflective surface.
- » Cursors guide the users to the areas with highest and lowest temperature on the thermal images.
- » Temperature range: -20°C to 550°C
- » Built in rechargeable 26650 battery

KEY DESCRIPTION



- ① Central point temperature
- ② Cold point temperature cursor
- ③ Hot point temperature cursor
- ④ Maximum value/minimum value of field temperature
- ⑤ Battery power
- ⑥ Current emissivity
- ⑦ Colour code
- ⑧ Temperature cursor at central point
- ⑨ Time



SPECIFICATIONS

| | |
|-------------------------------------|---|
| DISPLAY SCREEN | 3.5" FULL ANGLE TFT DISPLAY SCREEN |
| INFRARED IMAGE RESOLUTION | 256 X 192 |
| VISIBLE IMAGE RESOLUTION | 300,000 pixels |
| FIELD ANGLE / SHORTEST FOCUS LENGTH | 56°x42° / 3.2m |
| THERMAL SENSITIVITY | 0.07°C |
| TEMPERATURE MEASUREMENT RANGE | -20°C to 300°C (-4°F to 572°F) |
| MEASUREMENT ACCURACY | ±2% or ±2°C |
| EMISSIVITY | Adjustable from 0.01 to 1.0 |
| FRAME RATE OF THERMAL IMAGES | 2.5HZ |
| WAVELENGTH COVERAGE | 8-14um |
| FOCUS MODE | Fixed |
| CLOUR PALETTE | Rainbow, iron oxide red, cold colour, black & white, white & black |
| VIEW OPTION | The integration of thermal image with 25% step length and visible image |
| STORAGE MEDIUM | Built-in 8GB |
| FILE FORMAT | JPG / MP4 |
| BATTERY | Built-in rechargeable 26650 lithium battery |
| POWER SUPPLY | Type C USB |
| AUTOMATIC POWER-OFF TIME | Selectable: 5 minutes / 20 minutes / not power off automatically |
| PRODUCT DIMENSIONS | 255.4mm×122.1mm×97.2mm |
| PRODUCT WEIGHT | 588g |
| WORK TEMPERATURE | 0°C to 45°C |
| STORAGE TEMPERATURE | -20°C to 60°C |
| RELATIVE HUMIDITY | < 85% RH |