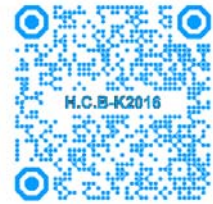




ET2016K

BMW ENGINE SUPPORT BAR

PAT. M534705

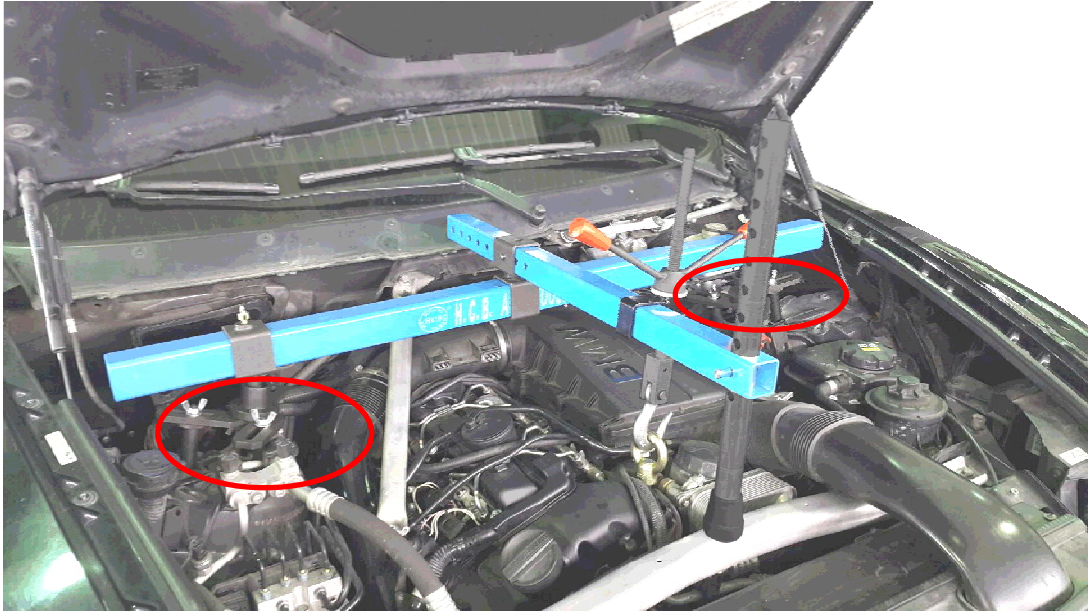


VIDEO



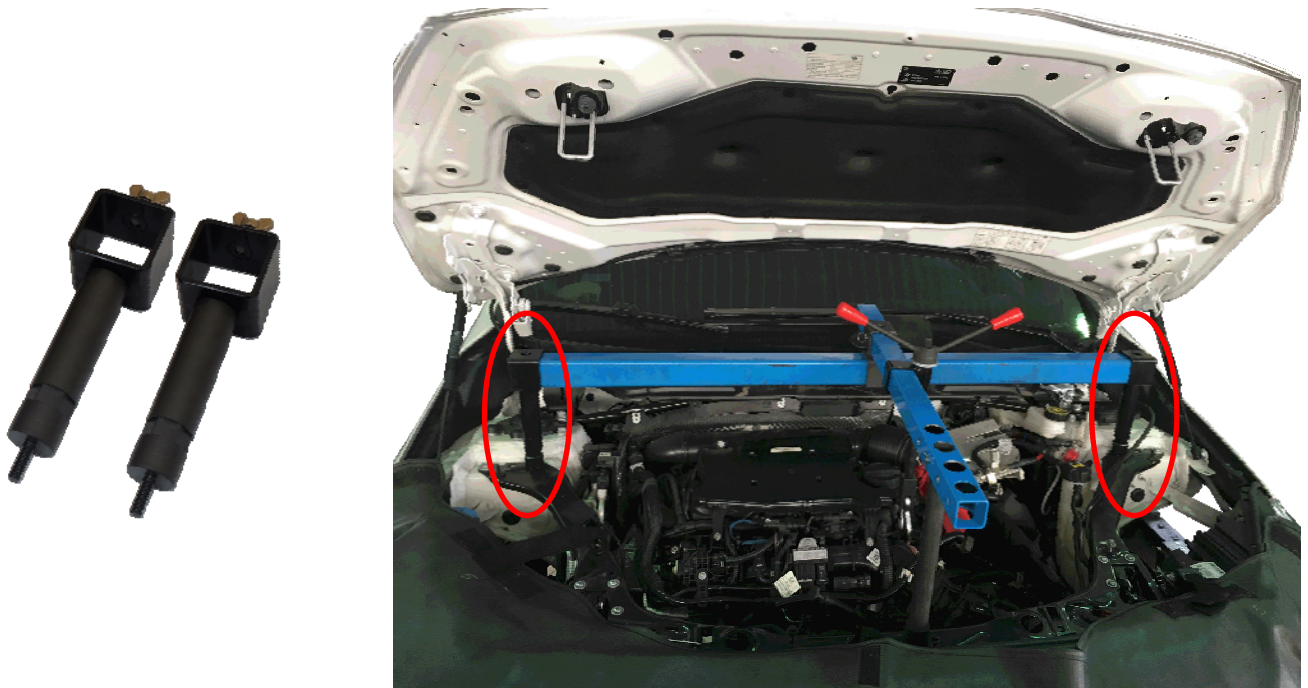
- The main body is a 1,400 mm long square tube with two removable supporting stands which can be set on the threaded hole bases of the shock absorber upper base for better, steady engine holding.
- There are universal joints on both supporting stands which give the ability to adjust the support bar in any direction.
- The adjustable 720 mm long square tube offers a third support to avoid the engine toppling down.
- There is a joint added between the two square tubes which allows the 720mm square tube to be turned clockwise or counterclockwise.
- One forging hook and chain make it easy to hang on all kinds of engine.
- One hanging ring and locking ring are included which can be screwed onto the engine directly to hold the engine.
- There is a pair of secondary stands which can be set on the threaded holes of linking bars in the engine bay.
- Application: All BMW models.

Support Stand Choices:



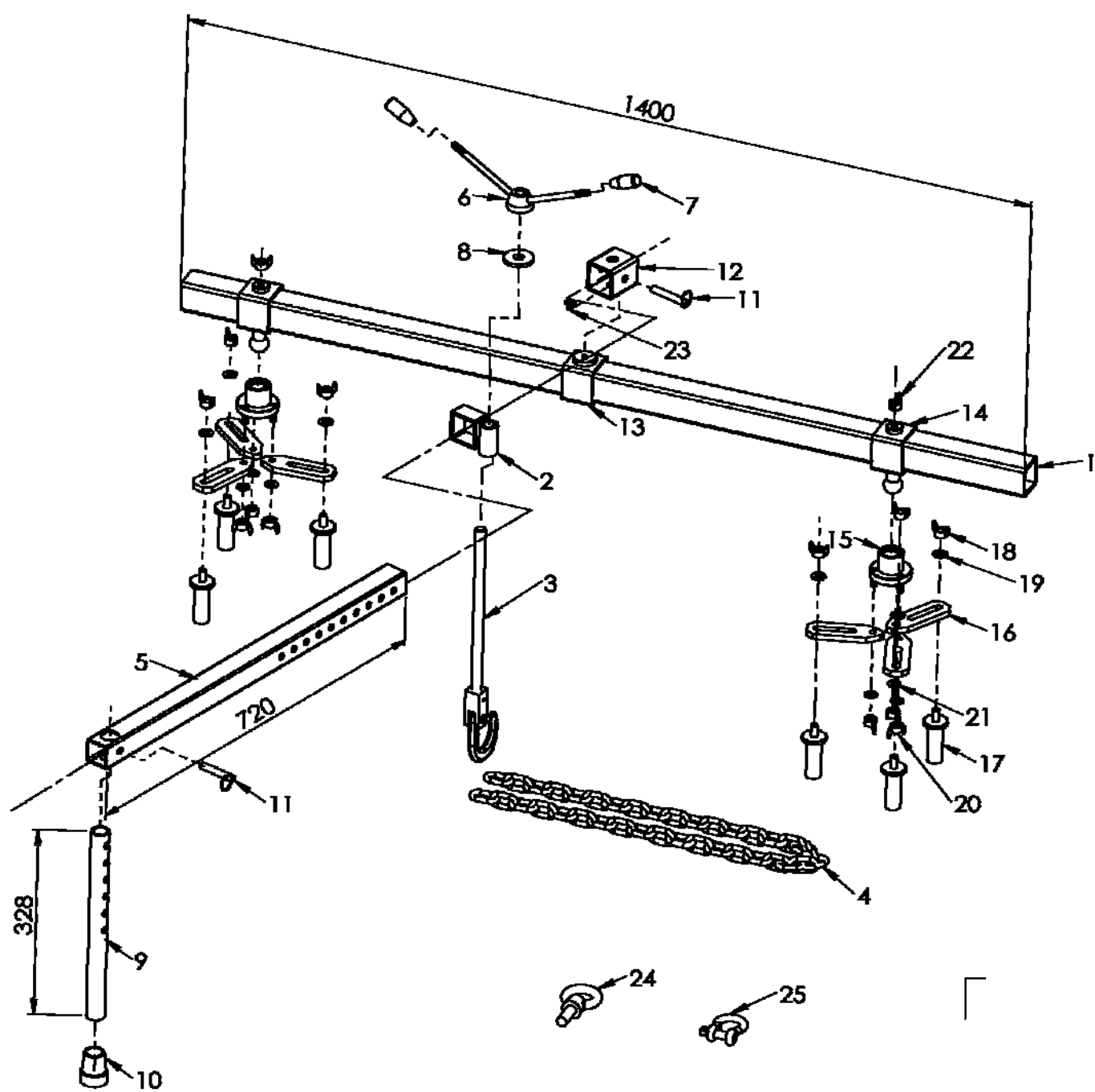
Used on BMW 750 Li

- Standard support stands can be set on the threaded hole bases of shock absorber upper base for better, steady engine holding.



Used on BMW 218d

- Secondary support stands can be set on the threaded holes of linking bars in the engine bay.
- These secondary support stands are designed for BMW 2-series where the upper base of the shock absorber is too close to the cockpit. Thus the engine support bar must be set forward to avoid touching the hood.



No.	Item	Dimensions	Q'ty
1	Support bar main body	L1400 × W50 × H50	1
2	Sliding block	L78 × W28 × H50	1
3	Hook	L400 × TOD1.5	1
4	Chain	ϕ 6 × L950	1
5	Support bar	L720 × W40 × H40	1
6	Y handle	5/8" - 11UNC × H25	1
7	Plastic handle	3/8" - 16UNC	1
8	5/8" washer	ϕ 46 × ϕ 16 × T5	1
9	Support stick	ϕ 1 1/8 × L330	1
10	Plastic base	ϕ 41.5 × L51	1
11	Pin	ϕ 10 × L62	2
12	Turning block	L60 × W50 × H50	1
13	Sliding block	L68 × W60 × H50	1
14	Sliding block	L200 × W60 × H50	2
15	Support upper base	ϕ 64 × L62	2
16	Adjustable support base	L118 × W38×H59	6
17	Support foot	ϕ 38 × L91	6
18	Wing nut	M10 × P1.5	6
19	Washer	M10 × ϕ 21 × 1.5T	6
20	Wing nut	M8 × P1.25	6
21	Washer	M8 × ϕ 19 × 1.5T	6
22	Wing nut	M8 × P1.25 × thread length 20L	2
23	Pan head screw	M8 × P1.25 × 12L	1
24	Locking ring	M16 × P3.0 × 40L	1
25	Hanging ring	WLL 1/2"T, 7/16", ϕ 1/2"	1