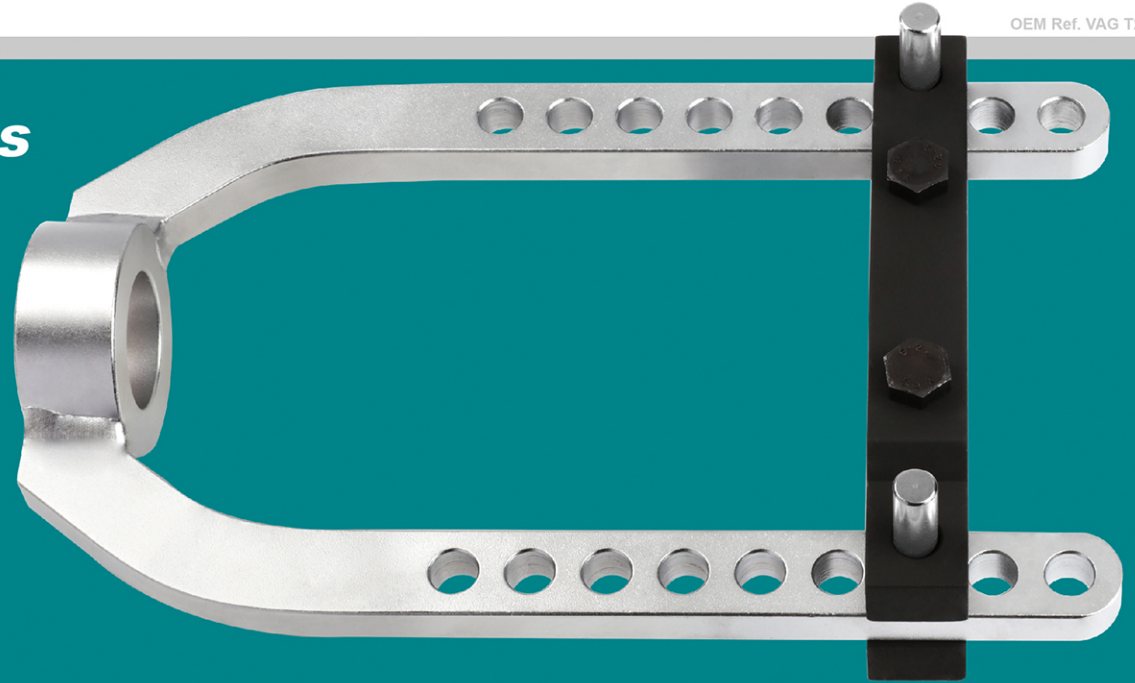
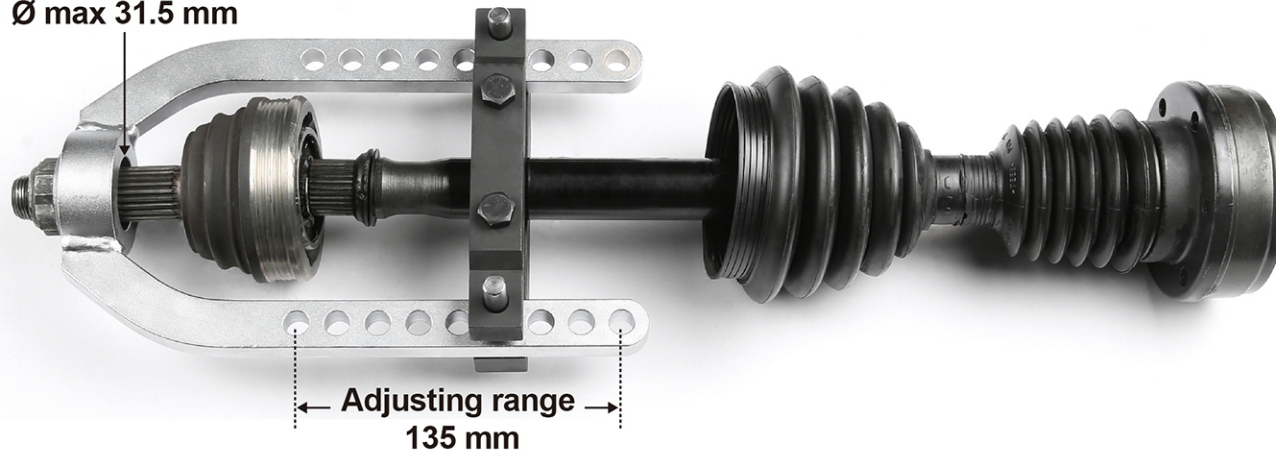


For removing the CV joints on front wheel drive cars.

- No need to remove the entire drive axle from the vehicle.
- No need to use a hammer - avoid damage to drive axle.



Ø max 31.5 mm



Application:

1. Lose the nut of the drive shaft.
2. Put the CV joint puller over the drive shaft.
3. Fix the CV joint puller with the traverse.
4. Mount the nut of the drive shaft and actuate it with a suitable tool, till you separate the joint from the drive shaft.