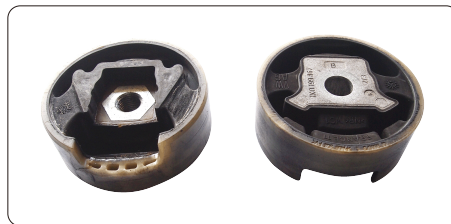


ET1544B

VW FRONT SUSPENSION SILENT BLOCK EXTRACTION/ INSTALLATION TOOL KIT (MANUAL)



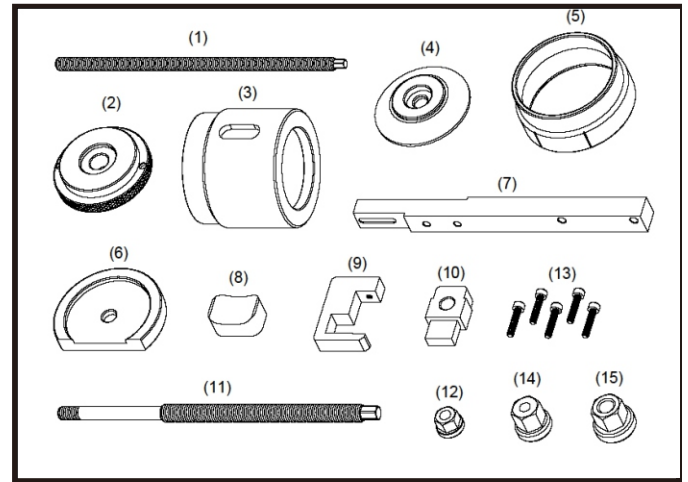
Silentblocs



*** Character:**

The ET1544B pulling device allows the quick and safe removal and installation of assembly of carrier double-type silentblocs performed suitably on the vehicle. Loosening or removing the assembly of carrier from the vehicle and follow-up wheel alignments are not necessary.

Components



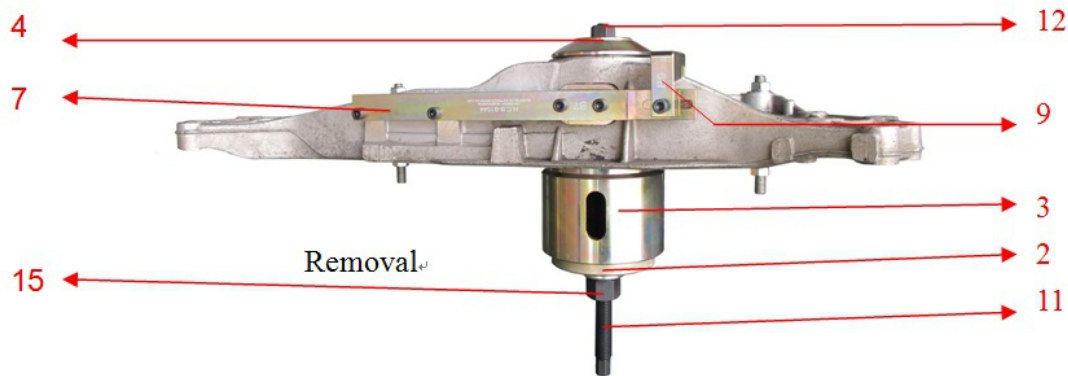
No.	Component	Dimension	Q'TY	Remark
1	Installing screw	M12xP1.75x280L	1	H8
2	Removing/Installing plate	D:φ89.5x22L	1	d:φ17L
3	Removing socket	D:φ106x92L	1	d:φ73L
4	Removing plate	D:φ89x17L	1	d:φ13L
5	Installing socket	D:φ106x45L	1	d:φ90L
6	Installing plate	D:φ82x15L	1	d:φ13L
7	Fixing plate(1)	L280xW22xH22	1	
8	Fixing plate(2)	L22xW45.5xH31.8	1	
9	Fixing plate(3)	L16xW49xH72	1	
10	Silentbloc alignment insert	L18xW33.7xH56	1	
11	Removing screw	M16xP2.0x310L	1	H12,M12xP1.75
12	Nut	M12xP1.75	1	H19
13	Hex screw	M6xP1.0x30L	5	
14	Bearing nut(1)	M12xP1.75	1	H24
15	Bearing nut(2)	M16xP2.0	1	H26

Applications

Make	Model	Year
Audi	A3 (8P1)	05/2003 onwards
Audi	TT (8J3, 8J9)	from 08/2006 to 06/2010
Seat	Altea (5P5, 5P5, 5P8)	03/2004 onwards
Seat	Leon (1P1)	05/2005 onwards
Seat	Toledo III (5P2)	from 04/2004 to 05/2009
Skoda	Octavia (1Z3, 1Z5)	from 02/2004 to 12/2010
VW	Caddy III (2KA, 2KB, 2KH, 2KJ, 2CA, 2CB, 2CH, 2CJ)	from 04/2004 to 08/2010
VW	EOS (1F7, 1F8)	06/2006 onwards
VW	Golf Plus (5M1, 521)	01/2005 onwards
VW	Golf V (1K1, 1K5)	from 10/2003 to 2009
VW	Golf VI (5K1, AJ5)	10/2008 onwards
VW	Jetta III (1K2)	from 08/2005 to 10/2010
VW	Touran (1T1, 1T2, 1T3)	08/2003 onwards
VW	Passat (3C2, 3C5, 362, 365)	from 03/2005 to 06/2010
VW	Scirocco (137)	05/2008 onwards
VW	Tiguan (5N)	09/2007 onwards

Instructions

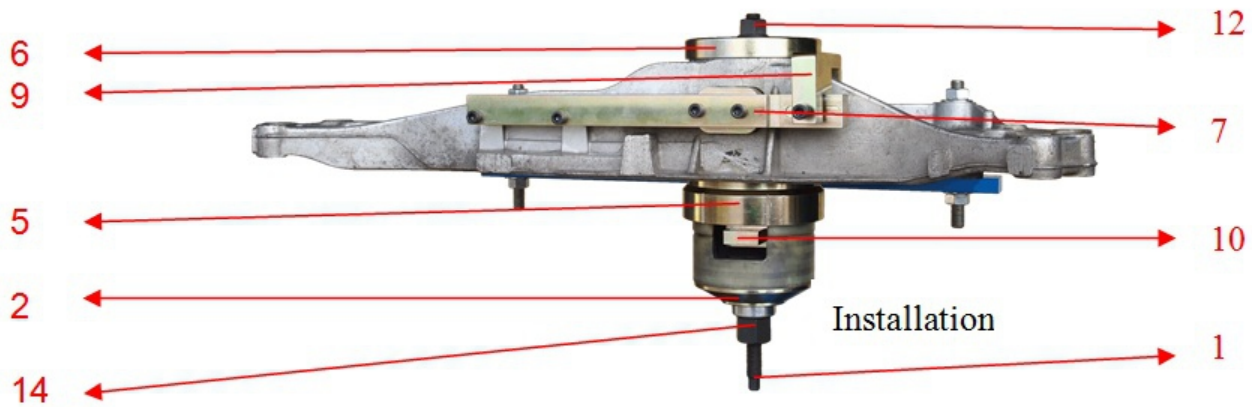
Please follow the instructions to use the ET1544B, If tools get damaged without following the instructions, then the tools are not under warranty. Before operating, work with proper protective equipment / tools to prevent injury / damage.



※ Removal

- Step 1. Put the fixing plate 1 (No. 7) on the subframe, and use four hex screws (No. 13) to fix the fixing plate 1 (No. 7).
- Step 2. Put the fixing plate 3 (No. 9) on the right of fixing plate 1 (No. 7), and use one hex screw (No. 13) to screw the fixing plate 3 (NO. 9) onto the fixing plate 1 (No. 7).
- Step 3. Put the removing plate (No. 4) on the silentblocs, insert the removing screw (No. 11) (less threads side faces down) from the downside through the removing plate (No. 4), put the nut (No. 12) on the upside of the removing plate (No. 4) and screw up on the removing screw (No. 11), then pull down the removing screw (No. 11) a little bit to tighten it.
- Step 4. Combine the removing socket (No. 3) with the removing/installing plate (No. 2). (The No. 2 is below the No.3), insert the combination from the downside of the silentblocs into removing screw (No. 11), and screw the Bearing nut 2 (No. 15) up onto the removing screw (No. 11) from the downside of the removing screw (No. 11). Finally, use two wrenches to depart the silentblocs (one wrench screws the bearing nut 2, and the other fix the removing screw to avoid rotating).
- Step 5. Keep screwing until depart the combination of the removing socket (No. 3) and the removing/installing plate (No. 2) with silentblocs from subframe. Then depart the combination, and the silentblocs have been extracted.

※ Installation



Step 1. Position the fixing plate 1 (No. 7) and the fixing plate 3 (No. 9).

Step 2. Put the installing plate (No. 6) on the upside of the screw hole of silentblocs, insert the installing screw (No. 1) (No thread side faces down) from the downside through the installing plate (No. 6), put the nut (No. 12) on the upside of the installing plate (No. 6) and screw up on the installing screw (No. 1).

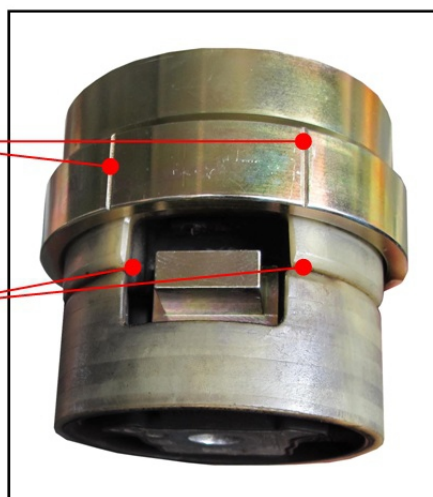
Step 3. Put the silentbloc alignment insert (No. 10) in the middle of two silentbloc to fix the position of silentblocs.

Step 4. Put the installing socket (No. 5) on the silentblocs as per the picture below.

Be aware!

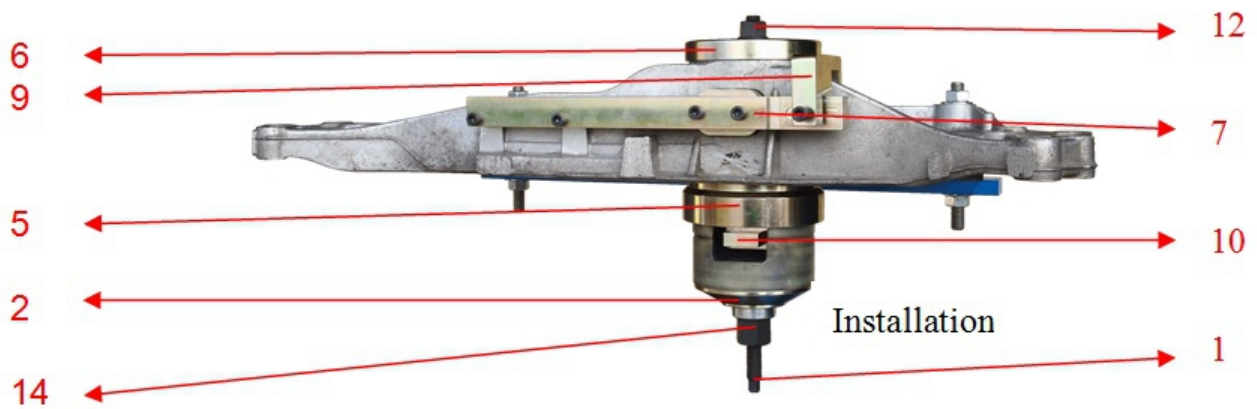
Lines

Gap

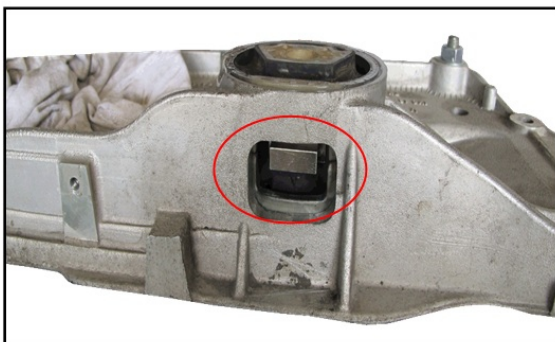


When silentblocs combine with installing socket (No. 5), the gap of silentblocs needs to put in the middle of the two lines.

※ Installation



5. Insert the combination of installing socket (No. 5) and silentblocs into the installing screw (No. 1) from the downside (the installing socket side faces up), then insert the removing/installing plate (No. 2) into the installing screw (No. 1) from the downside as well, and screw the bearing nut 1 (No. 14) up on the installing screw (No. 1) from the downside of the installing screw (No. 1). Finally, use two wrenches to install the silentblocs (one wrench screws the bearing nut 1, and the other fix the installing screw to avoid rotating).
6. Keep screwing until the silentblocs back to their position, then depart all the tool components away (including the silentbloc alignment insert).



- After installing, the silentbloc alignment insert (No.10) needs to be taken out.
- Do not forget!!