

# ET1489A

## VW (PASSAT / TIGUAN / GOLF) SUB-FRAME BUSH EXTRACTOR/ INSTALLER



PASSAT



TIGUAN



GOLF

- This tool is designed to remove and install the bushing.
- Application: VW A3 (04~), GOLF (04~), PASSAT (06~), JETTA (06~), TIGUAN (08~), TT (06).



**IMPORTANT: READ THESE INSTRUCTIONS CAREFULLY.**

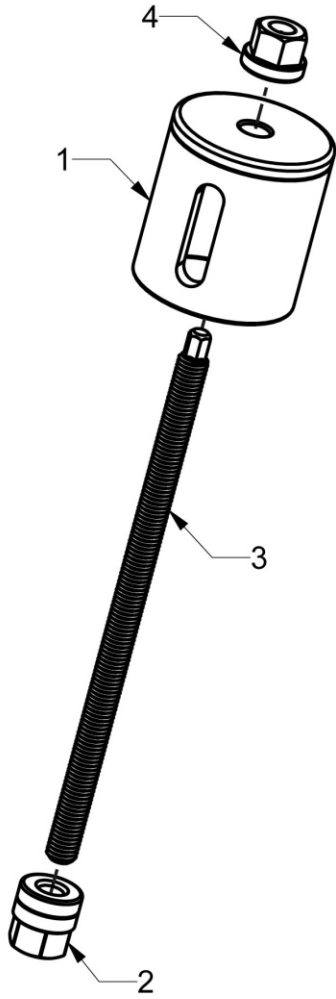
※Warning! Ensure Health and Safety, local authority and general work shop practice regulations are adhered to when using tools.

※DO NOT use tool if damaged.

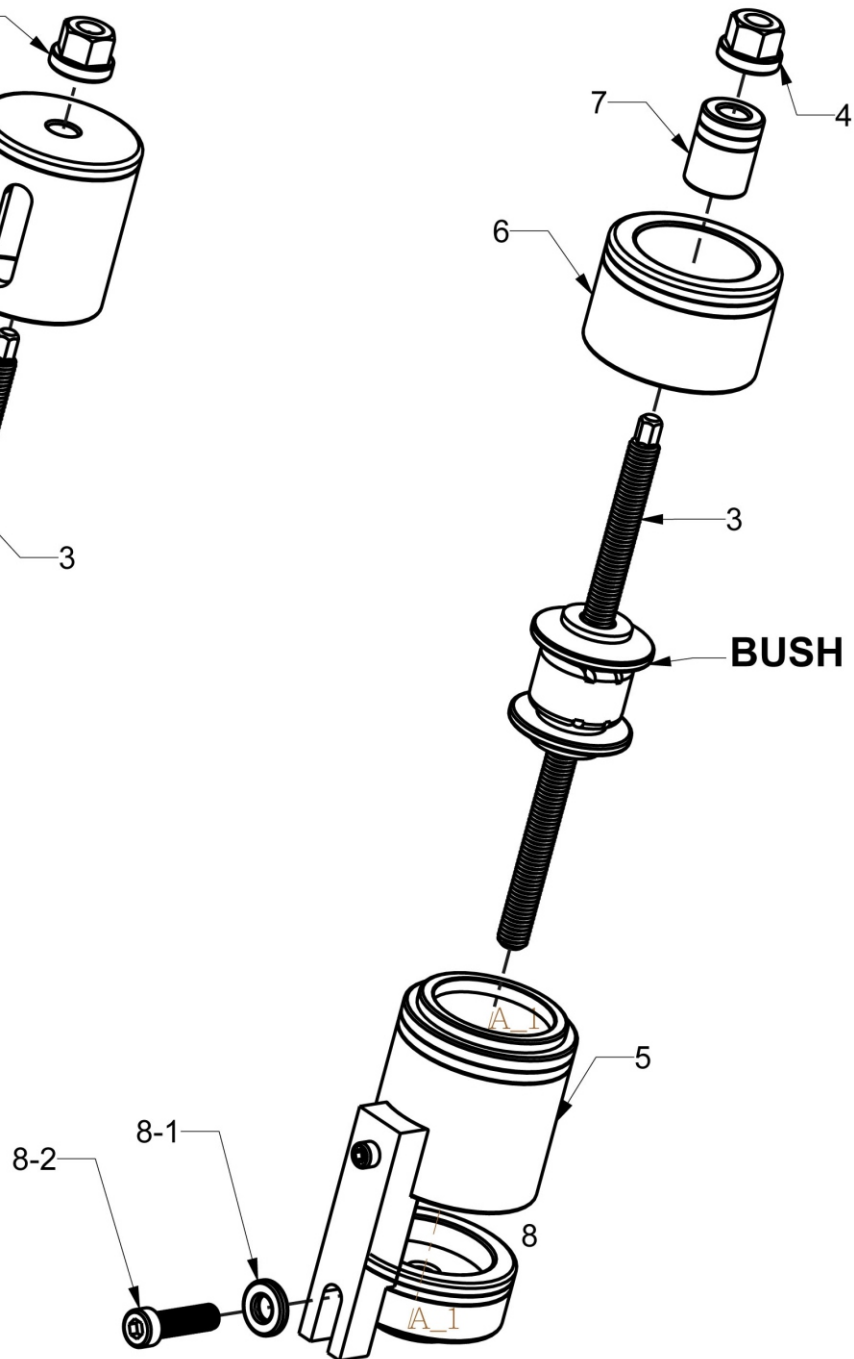
※Maintain tool in good and clean condition for best and safest performance.

※WARNING! The warnings, caution and instructions referred to in this manual cannot cover all possible conditions and situations that may occur. It must be understood that common sense and caution are factors which cannot be built into this product, but must be applied by the operator.

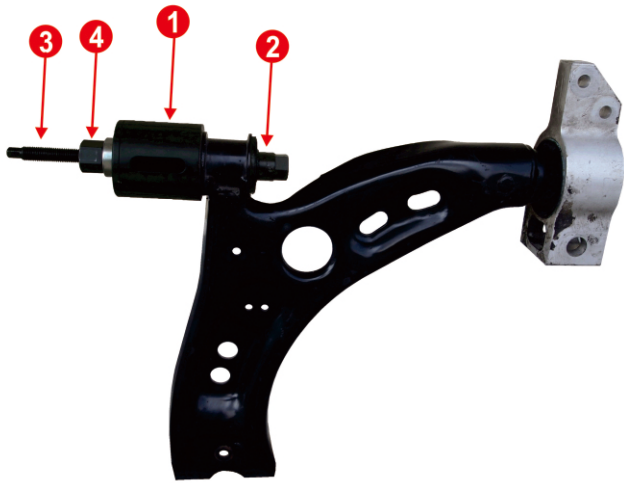
## REMOVAL



## INSTALLATION



## REMOVAL:USE ON TIGUAN



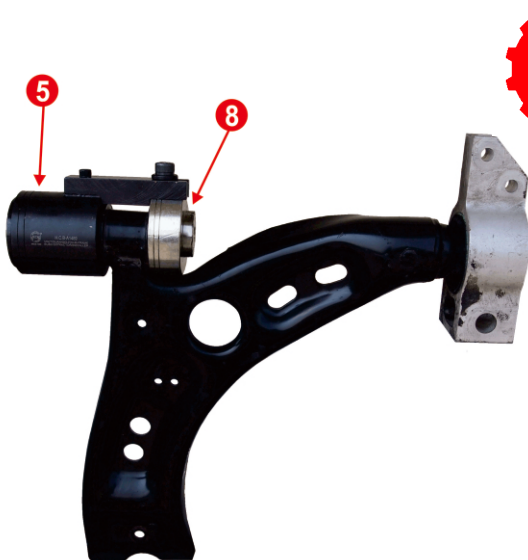
1



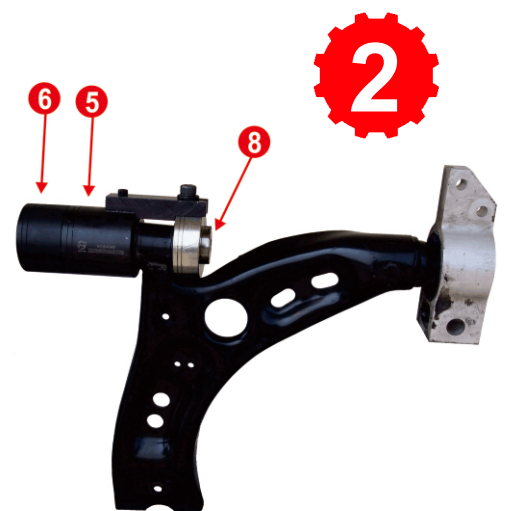
1. Put the spare parts no. 1. 2. 3. 4 to the frame.
2. Turn part no.4 clockwise by H24 wrench until the bush is completely pulled out.

3. Use part no.10 to clean the inner and outside of the bore and then the extracting is completed.

## INSTALLATION:USE ON TIGUAN



1

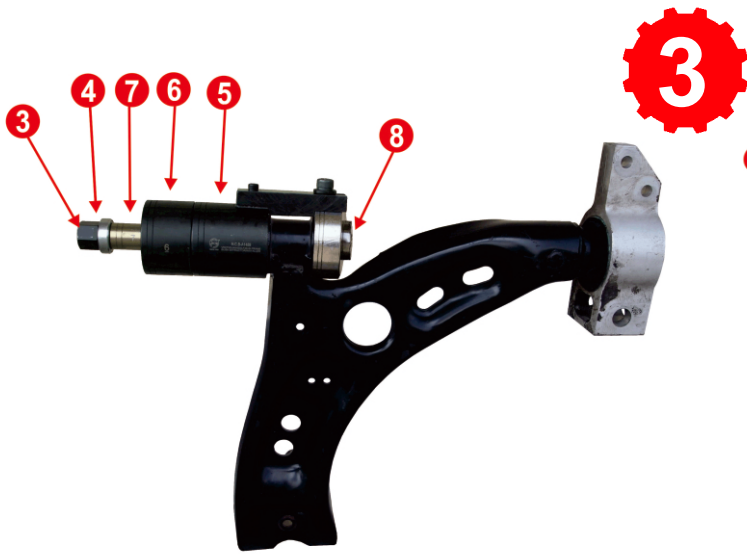


2

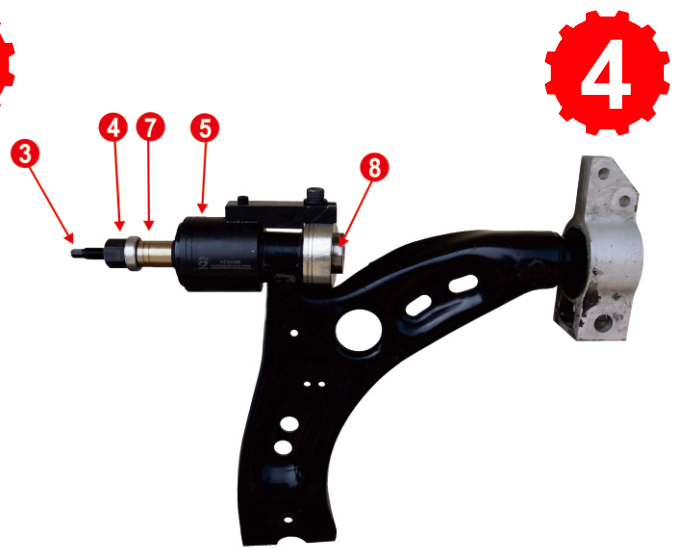
4. Put the spare parts no. 5.8 on the frame.

5. Cover the bush with Rubber protective oil and then insert into part no. 6

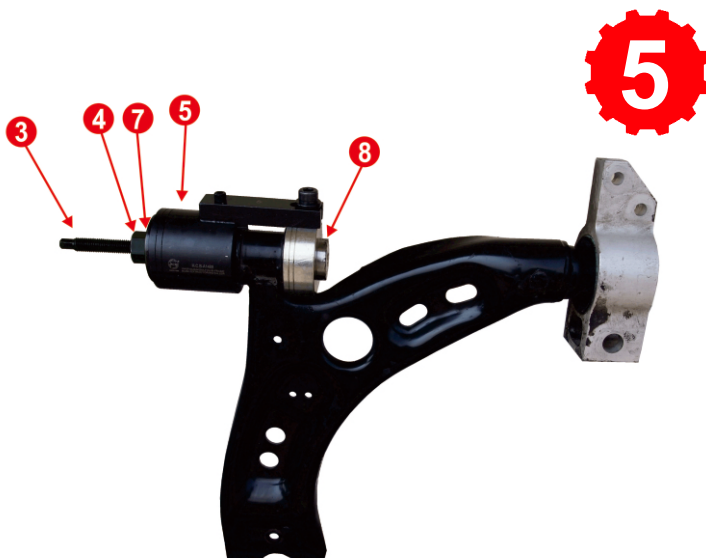
# INSTALLATION:USE ON TIGUAN



6. Attach parts no. 3. 4. 7 while the end of part no. 3 must be locked into part no. 8.



7. Remove the part no. 6 and tighten part no. 4 again.  
8. Loosen part no. 4 counterclockwise, then loose the part no. 8-2, and remove parts no. 5. 8-1. 8-2



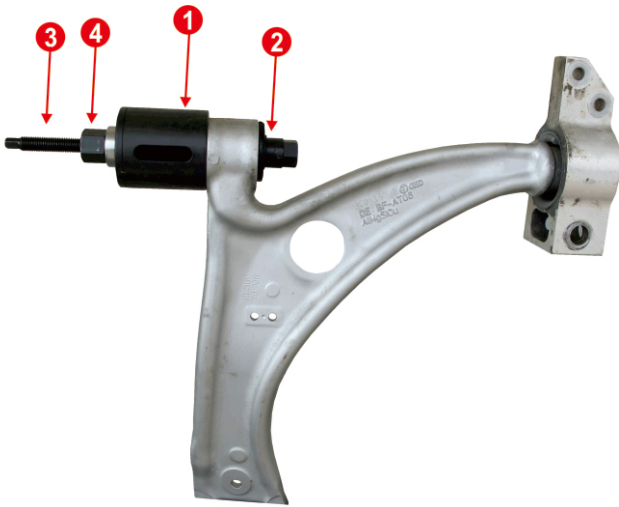
9. Install the part no. 8 the opposite way, while part no. 3 must be fastened with its end locked inside part no. 8  
10. Install the bush to proper position.



11. Install parts no. 1. 9 and fasten parts no. 1. 9 by locking part no. 4  
12. Remove the parts no. 1. 3. 4. 9 to complete installing the bush.



## REMOVAL:USE ON PASSAT

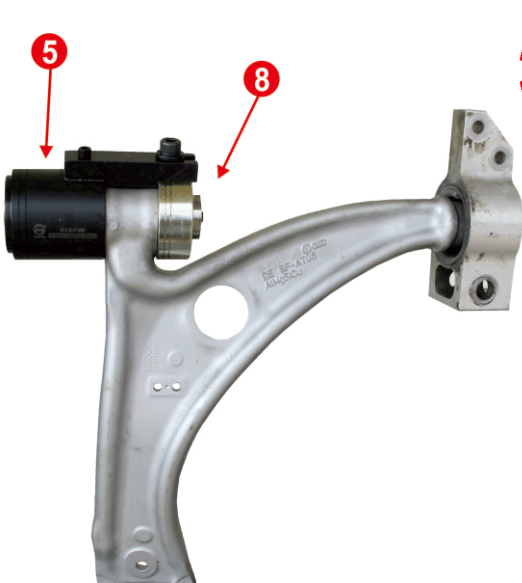


1. Put the spare parts no. 1. 2. 3. 4 to the frame.
2. Turn the part no.4 clockwise by H24 wrench until the bush is completely pulled out.



3. Use part no.10 clean the inner and outside of the bore and then the extracting is completed.

## INSTALLATION:USE ON PASSAT

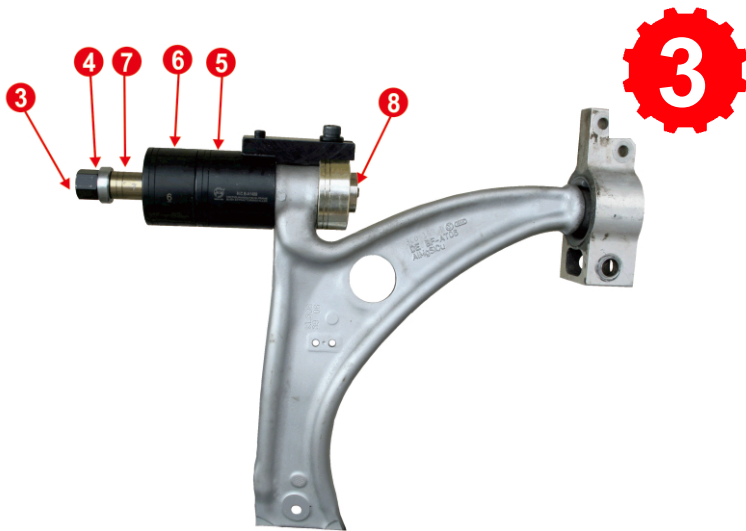


4. Put the spare parts no. 5.8 on the frame.

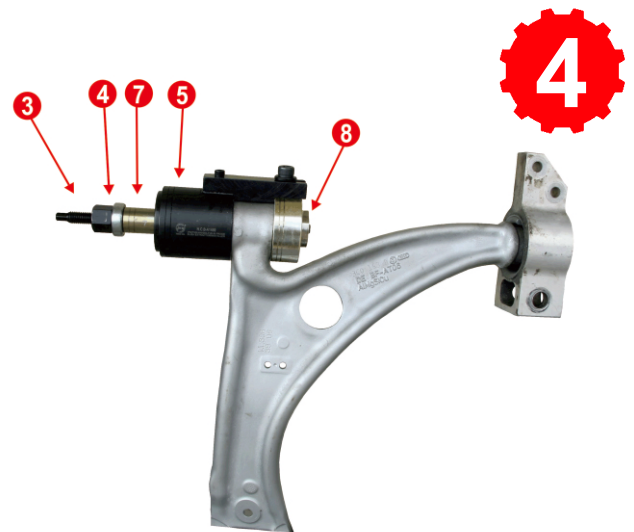


5. Cover the bush with Rubber protective oil and then insert into part no. 6

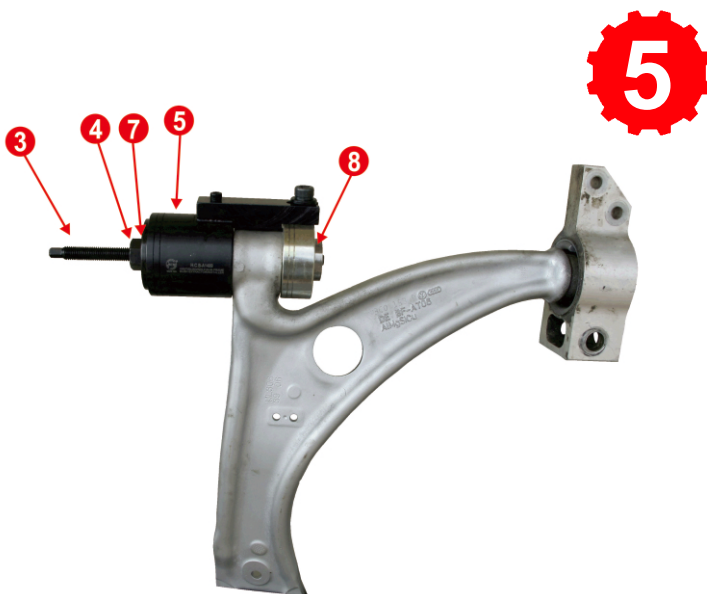
# INSTALLATION:USE ON PASSAT



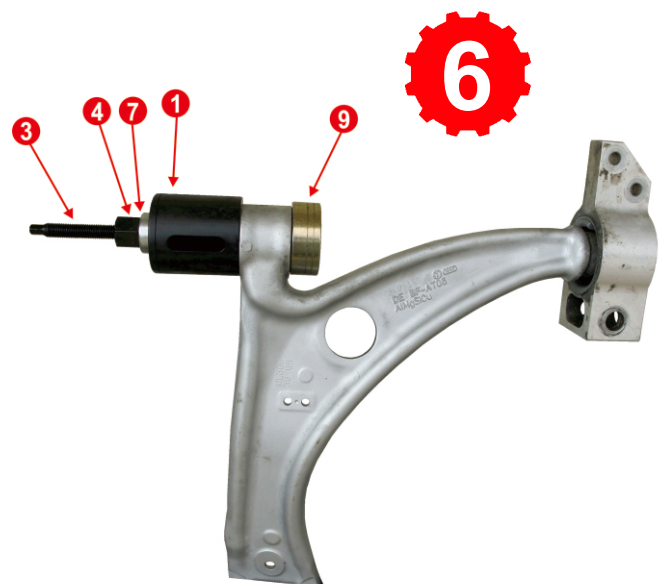
6. Attach parts no. 3. 4. 7 while the end of part no. 3 must be locked into part no. 8



7. Lock the part no. 4 with H24 wrench clockwise.  
8. Loosen part no.4 counterclockwise, then the part no. 8-2 , and remove parts no. 5. 8-1. 8-2



9. Turn the part 8 to another site.  
Part 3 must install into part 8.  
10. Turn the bush into the end.



11. Put the parts 1,9 on the frame.  
Turn the part 4 until part 1 and 9 close.  
12. Take the part 1,3,4,7,9 off, the installation will be complete.