

# ET1181F

## TRUCK SPRING PIN METAL BUSH REMOVAL / INSTALLATION TOOL KIT (17 TONS HYDRAULIC CYLINDER)

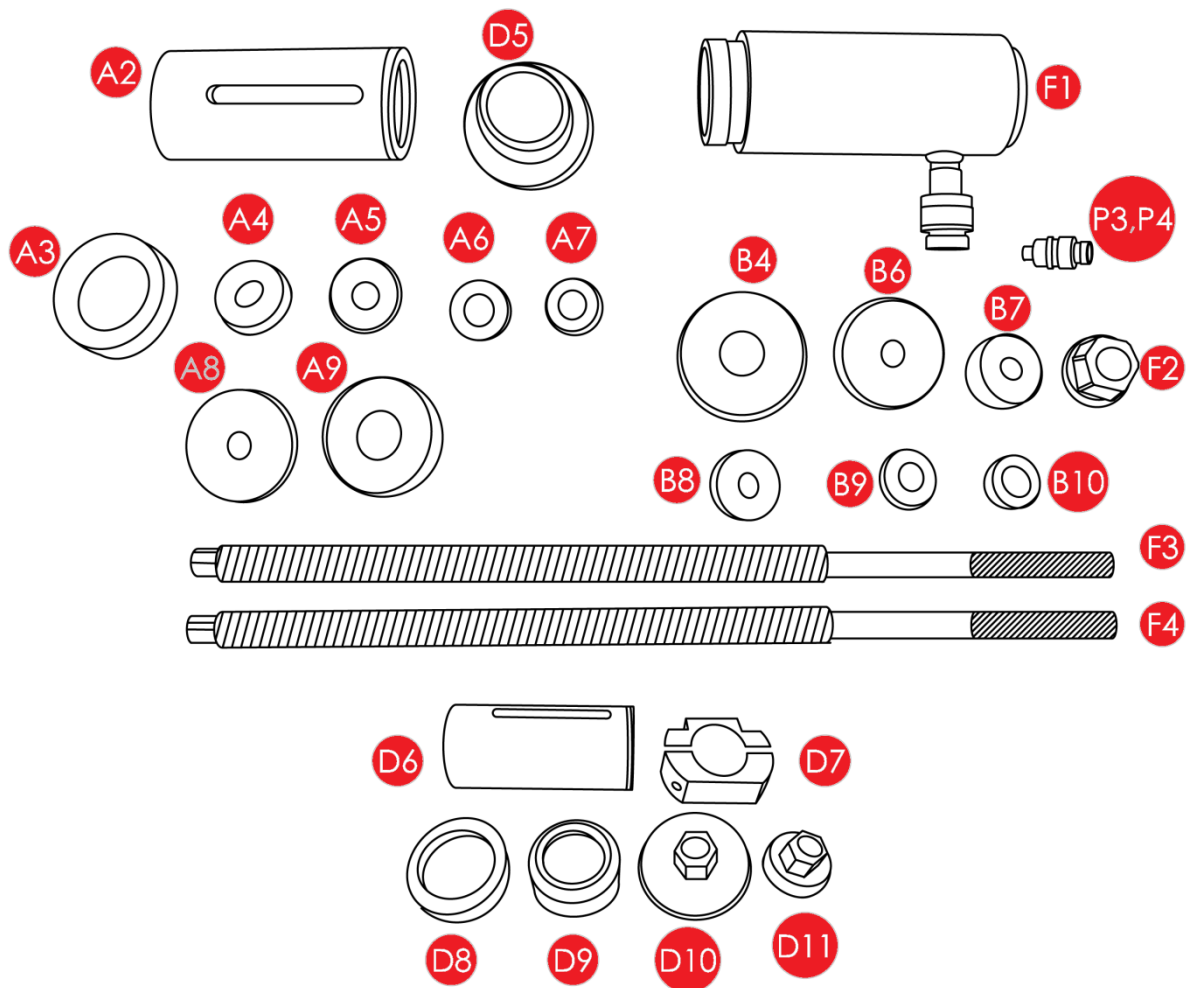


Optional adaptors:



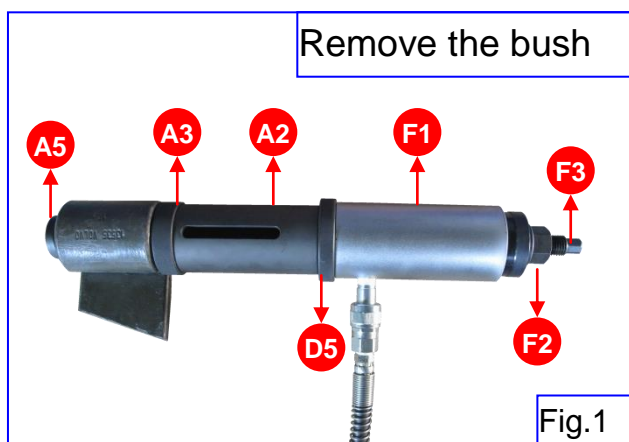
**Caution: To avoid danger, DO NOT stand behind the hydraulic cylinder while operating.**

- Powerful 17 tons hydraulic cylinder helps to remove the stuck spring pins easily.
- The hydraulic cylinder in this kit has a special non-threaded design which makes the operation easier because the screw can be quickly turned in and fixed on the cylinder.



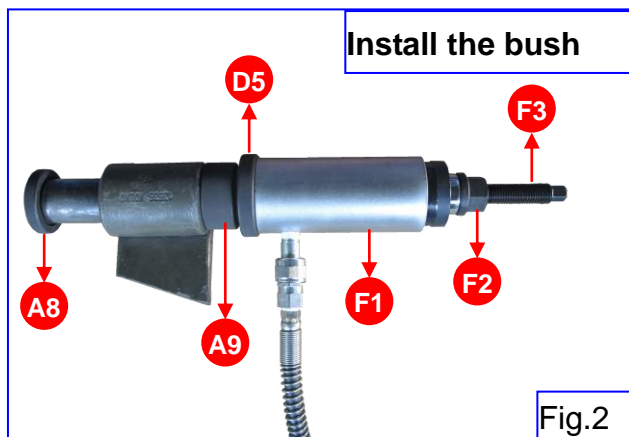
No.	Description	Specification	Q'ty	Remark
A2	Removing tube	D: $\phi$ 67,d: $\phi$ 48,L:145	1	
A3	Removing upper block	D: $\phi$ 73,d: $\phi$ 48,L:20	1	
A4	Removing block	D: $\phi$ 44, L:20	1	M16xP2.0
A5	Removing block	D: $\phi$ 44, L:20	1	M16xP2.0
A6	Removing block	D: $\phi$ 36, L:20	1	M16xP2.0
A7	Removing block	D: $\phi$ 33.7, L:20	1	M16xP2.0
A8	Installing block	D: $\phi$ 65, L:13	1	M16xP2.0
A9	Installing upper block	D: $\phi$ 65,d: $\phi$ 26,L:30	1	
D5	Installing tube	D: $\phi$ 80,d: $\phi$ 46,L:40	1	
B4	Installing upper block	D: $\phi$ 73,d: $\phi$ 26,L:20	1	
B6	Installing block	D: $\phi$ 65, L:20	1	M14xP2.0
B7	Removing block	D: $\phi$ 41.5, L:20	1	M14xP2.0
B8	Removing block	D: $\phi$ 39.5, L:20	1	M14xP2.0
B9	Removing block	D: $\phi$ 33.5, L:20	1	M16xP2.0
B10	Removing block	D: $\phi$ 29.5, L:20	1	M16xP2.0
F1	Hydraulic	17 tons	1	
F2	Nut	D: $\phi$ 42, H32, L:27	1	M20xP2.5
F3	Screw	H14, L:530	1	M20xP2.5, M16xP2.0
F4	Screw	H14, L:530	1	M20xP2.5, M14xP2.0

- Component No. 4~7, 9~11 is applicable for SCANIA & VOLVO trucks.
- Component No. B4, B6~B14 is applicable for ISUZU, FUSO, TOYOTA, MEDIUM-SIZED WAGON & PICKUP.
- Common parts No. 1, 2, 3 and 8
- To replace spring pin more easily. Money and labour saver.
- **Optional accessory: ET1129B HYDRAULIC HAND PUMP.**



### **Remove the bush:**

- 1-1.Reference Fig.1,pass F3 through the hydraulic. Install D5,A2, and A3, lock F2.
- 1-2.Pass screw through the bush, lock A5.
- 1-3.Use the pump. The bush will be removed easily.

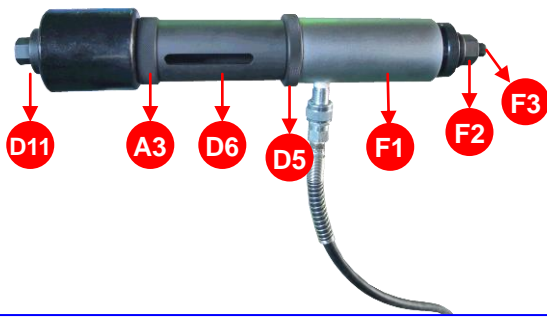


### **Install the bush**

- 1-1.Reference Fig.2. PassF3 through the hydraulic. Install D5 andA9. Lock F2.
- 1-2.Pass the screw through the bush.LcokA8.
- 1-3.Use the pump. The bush will be installed easliy.

## Remove / Install Volvo FM12 bush

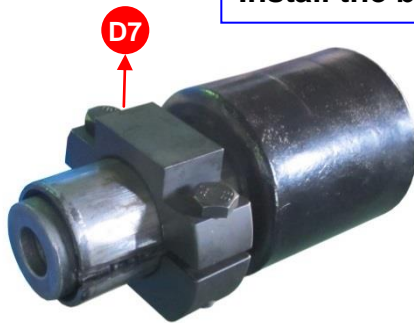
Remove the bush



1-1. Pass F3 through the hydraulic. Install A5, D6 and A3. Lock D11.

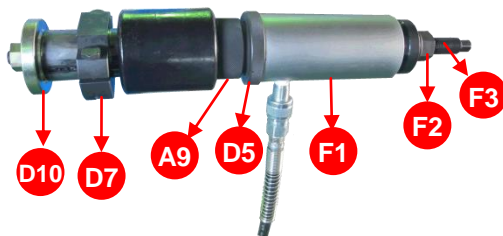
1-2. Lock F2 on another side.

Install the bush



Step 1.

Please lock D7 on the bush. Let bush be closer.

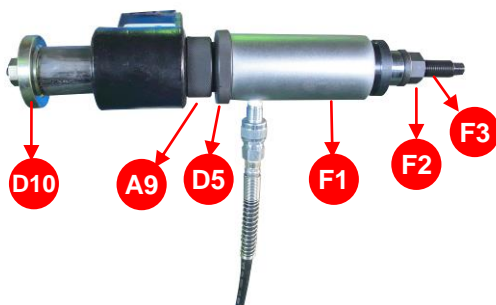


Step 2.

2-1. Put D5 and A9.

2-2. Pass F3 through the bush and lock D10.

2-3. Use the pump.



Step3.

After you install a part of the bush in the spring, remove D7.

Keep using the pump until finish installing the bush.