

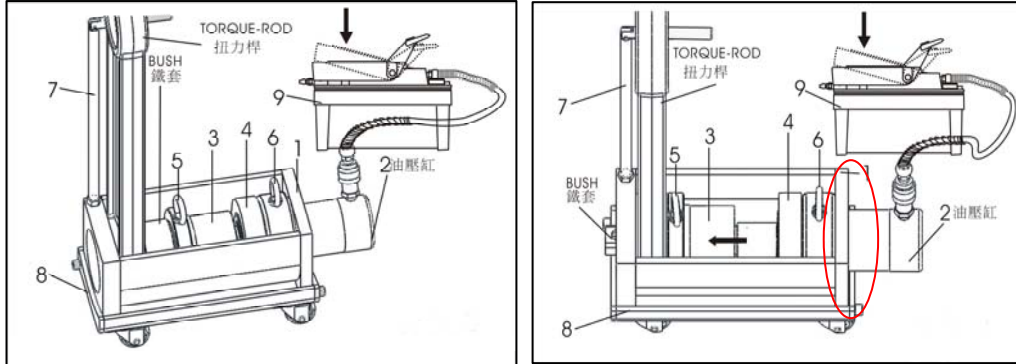
ET1170A



ET1170A TRUCK TORQUE-ROD BUSH REMOVAL / INSTALLATION PAT.M 307531

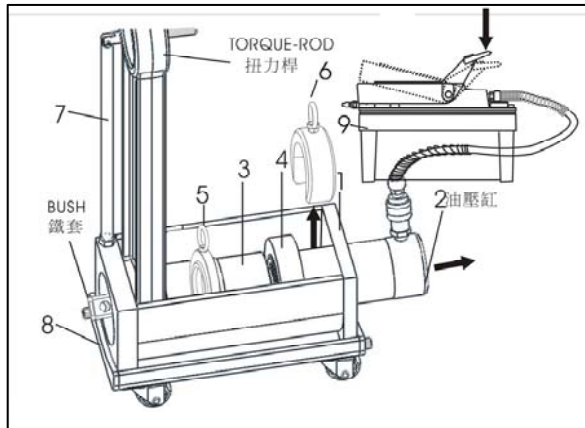


INSTALLATION :



* Keep stepping on the foot plate of air lock until the independent totally combined with Torque-Rod. (Without obstructing the working process of air pump)

INSTALLATION FINISHED :



* Once finished, release the pressure to take the #6 away and pull the cylinder back, so the Torque-Rod can be got out easily.



OPTIONAL: FOR U.S.A TRUCK

CLEANING HOLE

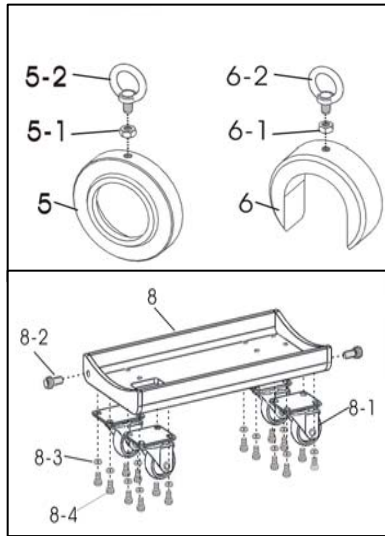
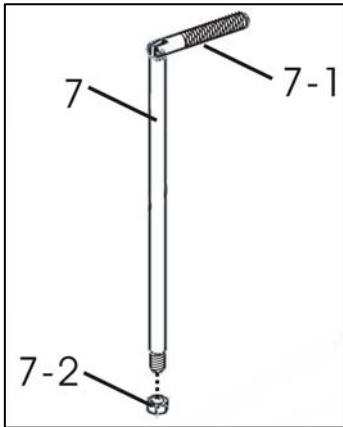
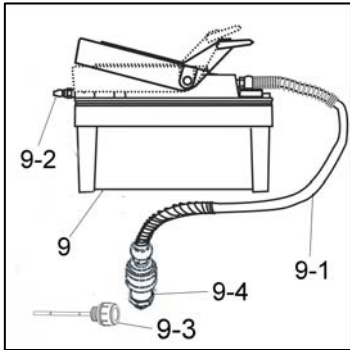
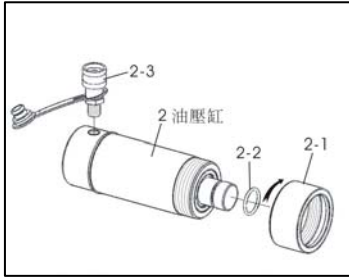
NO.	Description
ET1170A-01	MAIN BODY L358XW160XH151(m/m)
ET1170A-02	30 TON HYDRAULIC CYLINDER (STROKE 130mm)
ET1170A-03	Φ103X98L RING PIVOT
ET1170A-04	Φ138X35L NUT (FIXED ONTO HYDRAULIC) (M88XP2.0)
ET1170A-05	INSERTION SUPPORT SLEEVE (Φ138X30L)
ET1170A-06	C-SHAPE FIX BASE
ET1170A-07	TORQUE-ROD LOCK BAR (M14XP2.0)
ET1170A-08	TRAILER (L375XW180XH110mm)
ET1170A-09	AIR PUMP (OIL RESERVOIR CAPACITY 1,600 C.C.)
ET1170A-10	SPACER RING

* CLEANING HOLE : Clean our cinder, mud and dirt.

ET1170A

ET1170A

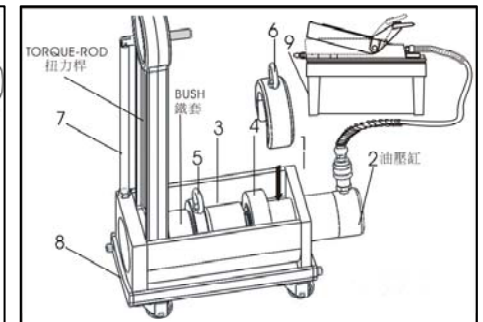
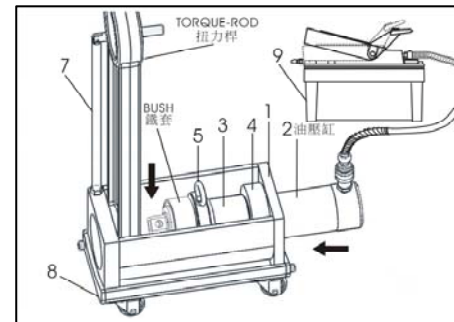
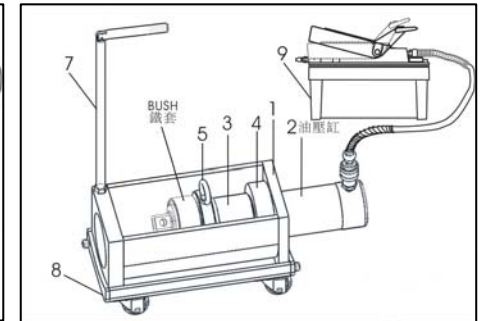
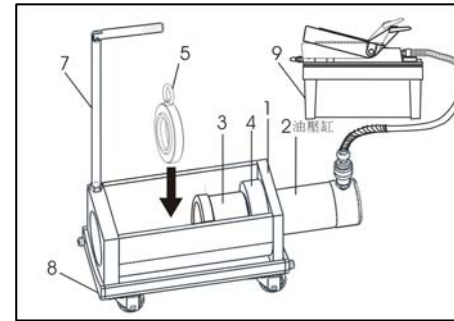
SPECIFICATION :



NO.	Description	QTY
A1170-1	MAIN BODY L358XW160XH151(m/m)	1
A1170-2	30 TON HYDRAULIC CYLINDER (STROKE 130mm)	1
A1170-2-1	SCREW THREAD PROTECTOR(M88XP2.0)	1
A1170-2-2	4033 O-RING	1
A1170-2-3	3/8" NPT QUICK COUPLING	1
A1170-3	Φ103X98L RING PIVOT	1
A1170-4	Φ138X35L NUT (FIXED ONTO HYDRAULIC) (M88XP2.0)	1
A1170-5	INSERTION SUPPORT SLEEVE (Φ138X30L)	1
A1170-5-1	NUT (M10XP1.5)	1
A1170-5-2	RING BOLT (M10XP1.5)	1
A1170-6	C-SHAPE FIXI BASE	2
A1170-6-1	NUT (M10XP1.5)	2
A1170-6-2	RING BOLT (M10XP1.5)	2
A1170-7	TORQUE-ROD LOCK BAR (M14X92.0)	1
A1170-7-1	GRIP	1
A1170-7-2	NUT (M14XP2.0)	1
A1170-8	TRAILER (L375XW180XH110mm)	1
A1170-8-1	2" MOVABLE WHEEL	4
A1170-8-2	MAIN BODY FIXED NUT (M8XP1.25)	2
A1170-8-3	SPRING WASHER	16
A1170-8-4	SCREW (M8XP1.25)	16
A1170-9	AIR PUMP (OIL RESERVOIR CAPACITY 1,600 C.C.)	1
A1170-9-1	OIL HOSE (150cm)	1
A1170-9-2	1/4" NPT QUICK COUPLING ADAPTER	1
A1170-9-3	OIL TANK LEVEL GAUGE	1
A1170-9-4	3/8" NPT QUICK COUPLING ADAPTER	1
A1170-9-5	HEXAGONAL PLASTIC SCREW	1

PREPARATION FOR INSTALLATION :

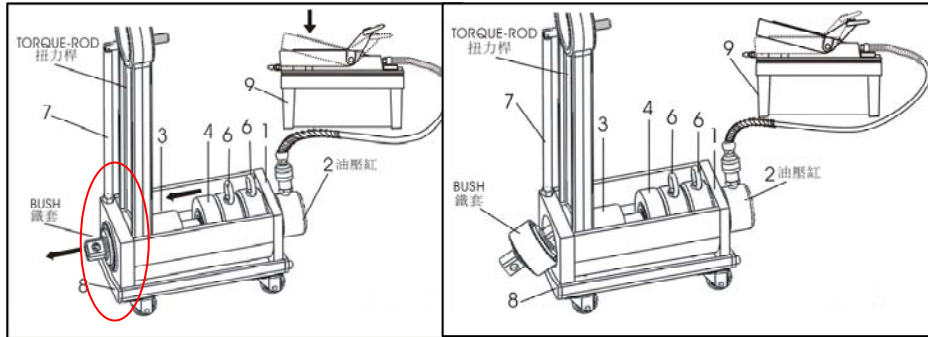
Clean the Torque-Rod and lubricate the bush before installation.



- 1) To cap over #3 with #5.
- 2) Put the bush into the main body and make a close-fitting with #5.
- 3) Put the Torque-Rod into the main body and push #2 forward for tightening all the accessories, put #6 onto the part of inside cylinder.

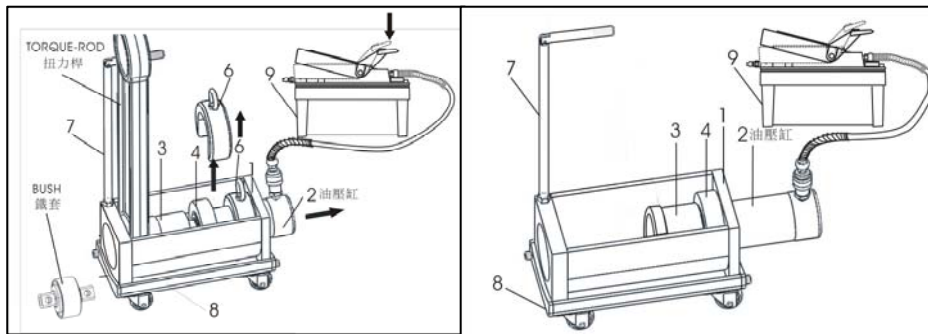
ET1170A

REMOVAL :



- 1) Firstly, the inspection of fitting bush into the port.
- 2) Keep stepping on the foot plate of air lock until the independent bush comes out. (Without obstructing the working process of air pump)

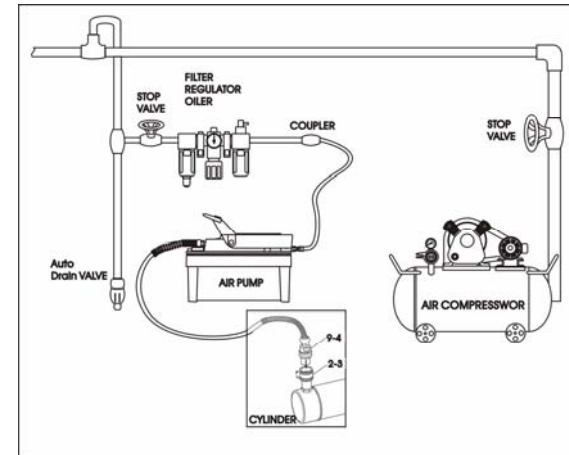
REMOVAL FINISHED :



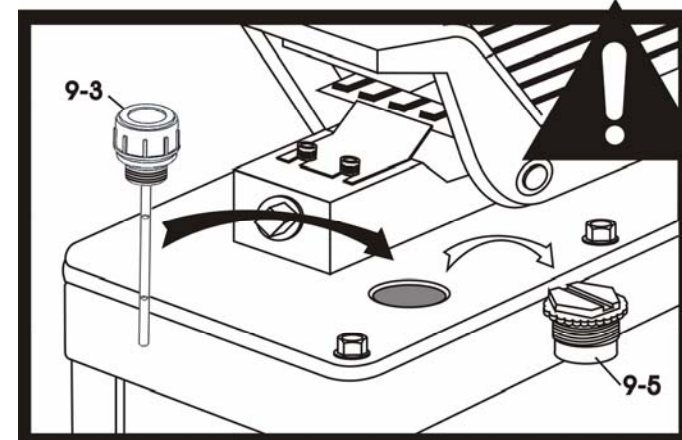
- * As it finished, releasing the pressure to take the #6 away, and pull the cylinder back, so the Torque-Rod can be got out easily.

ET1170A

! Warning Before Using the Air Pump

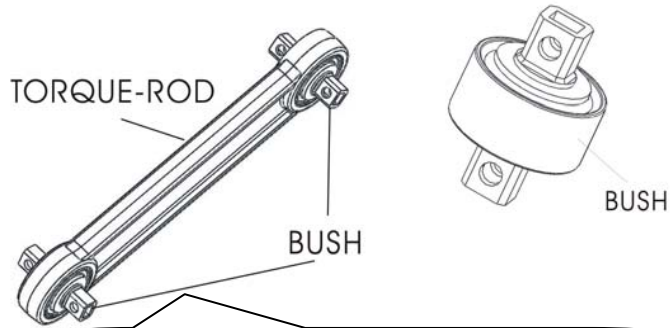


Use filter regulator / oiler to protect air pump. Failure to obey this instruction may decrease the life of inside components and cause serious injuries.



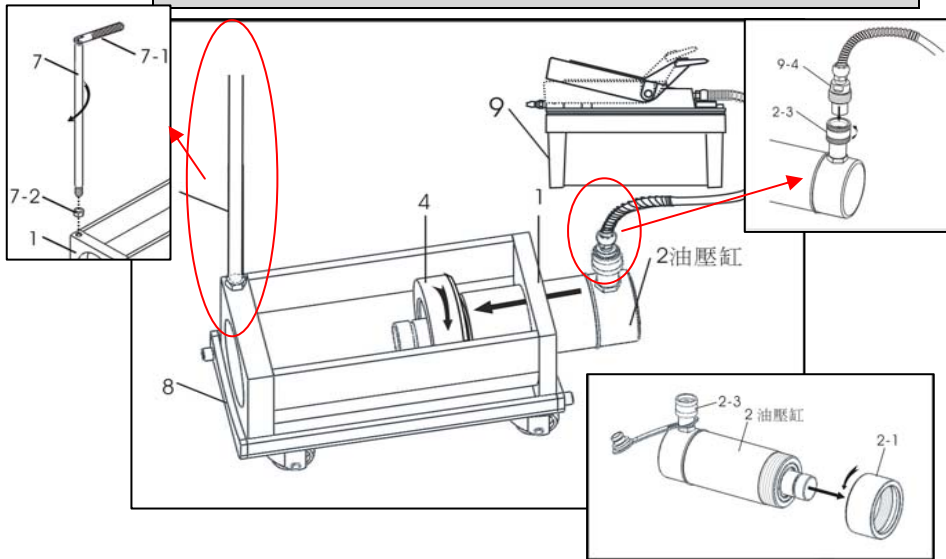
Notice:
Before change the A1170-9-5 Screw for A1170-9-3 Oil Tank Level, disconnect the pump from air supply.

ET1170A



APPLICATION :
FUSO / ISUZU / HINO / NISSAN DIESEL

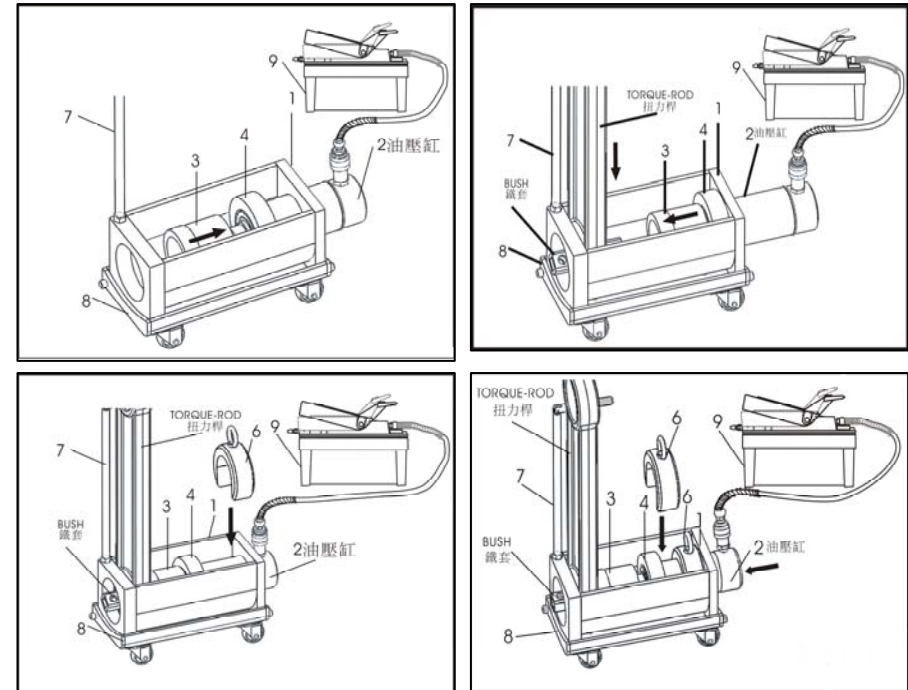
TRUCK PREPARATION FOR USING ACCESSORIES



- 1) Move #7-1 revolving around #7 to be locked into #1.
- 2) Separate #2-1 from #2, then put #2 pass through annular port of #1.
- 3) Operate #2-3 in conjunction with #9-4.
- 4) Lock #4 into #2 (turn advance angle in the direction of #2).

ET1170A

PREPARATION FOR REMOVAL :



- 1) Installation of #3, turn the narrower port in the direction of #2.
- 2) Put Torque-Rod in the main body close the gap between Torque-Rod & #3. Put #6 onto part of inside cylinder.