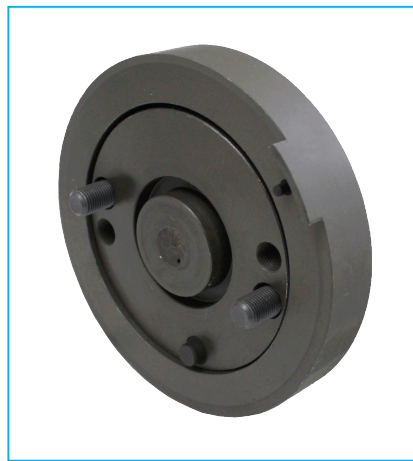




endeavour

ET1026L

JLR CRANKSHAFT TRIGGER WHEEL INSTALLER



- **Land Rover application:** Designed for install the crankshaft position Sensor Ring on Discovery 3 and 4, Range Rover Sport when fitted with TDV6 engine (3 Powertrain)
- **Jaguar applications:** Designed for install the Trigger Wheel to the rear crankshaft on X200 S Type, X250 XF, X350 XJ and X351 XJ (300 powertrain)
- Overall dimension: 125mm
- Specifically requested to repair sensor wheel dropping off or cracking
- **OEM Equiv:** 303-1130