

ET0946

🔋 450Wh/500W

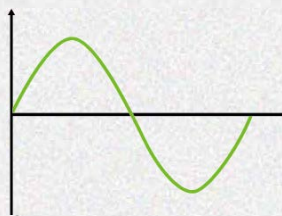
MOBILE POWER STATION



Innovative Outdoor Lithium-ion Power Generator

ET0946

450Wh/500W



Wall charging



Solar charging



Car charging



304mm

182mm



12VLIGHT

ET0946 100+ Hrs



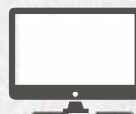
SMARIPHONE

60+ Recharges



LAPTOP

10 Recharges



TV

6 Hrs



MINIFRIDGE

10 Hrs

Product Feature I



- ◆ The most compact and lightest mobile power station on the world(450Wh), only 5kg including 500W inverter together
- ◆ 3 input modes : electricity grid, solar energy, on-board charging port
- ◆ 3 output modes: USB (5V), AC, DC(12V)
- ◆ The sleek, stylish and anti-scratch design will make you feel at ease in your next outdoor adventure
- ◆ Pure sine wave output, much more compatible
- ◆ Optional accessories: foldable PV panels

Product Feature II

Handy · Portable

Only One-Fifth of the Weight of Similar Power in Lead-acid Battery



Quiet · No Air Pollution



How to charge IT



CHARGE FROM SUN
20 Hrs
FULL SUN

SOLAR PANEL
SOLD SEPARATELY



CHARGE FROM AC PLUG
5 Hrs

INCLUDED



CHARGE FROM 12V
CARPORT
13 Hrs

INCLUDED



Specification

Battery Info		
Battery Type		Li-ion battery
Rated capacity		450Wh
Cycle life		>1500
Input		
Solar energy	Voltage	18-30 Vdc
	Current	≤15 A
	Power	≤140 W
Electricity grid	Voltage	100-265 Vac
	Frequency	45-65 Hz
On-board charger	Voltage	12 Vdc
Output		
AC output	Voltage	110V / 220 V
	Rated power	500W
USB output	Voltage	5 V
	Current	7.2 A
12V output	Current	≤20 A
	Rated power	200W MAX
Work environment		
Temperature		0°C to 45 °C
Humidity		10%-90%RH (non-condensing)
Storage environment		
Temperature		-10°C to +35 °C
Humidity		10%-90%RH (non-condensing)
General		
Weight		≤5 Kg
Dimensions		144x120x195 mm
Design life		5 years
Warranty period		1 year

