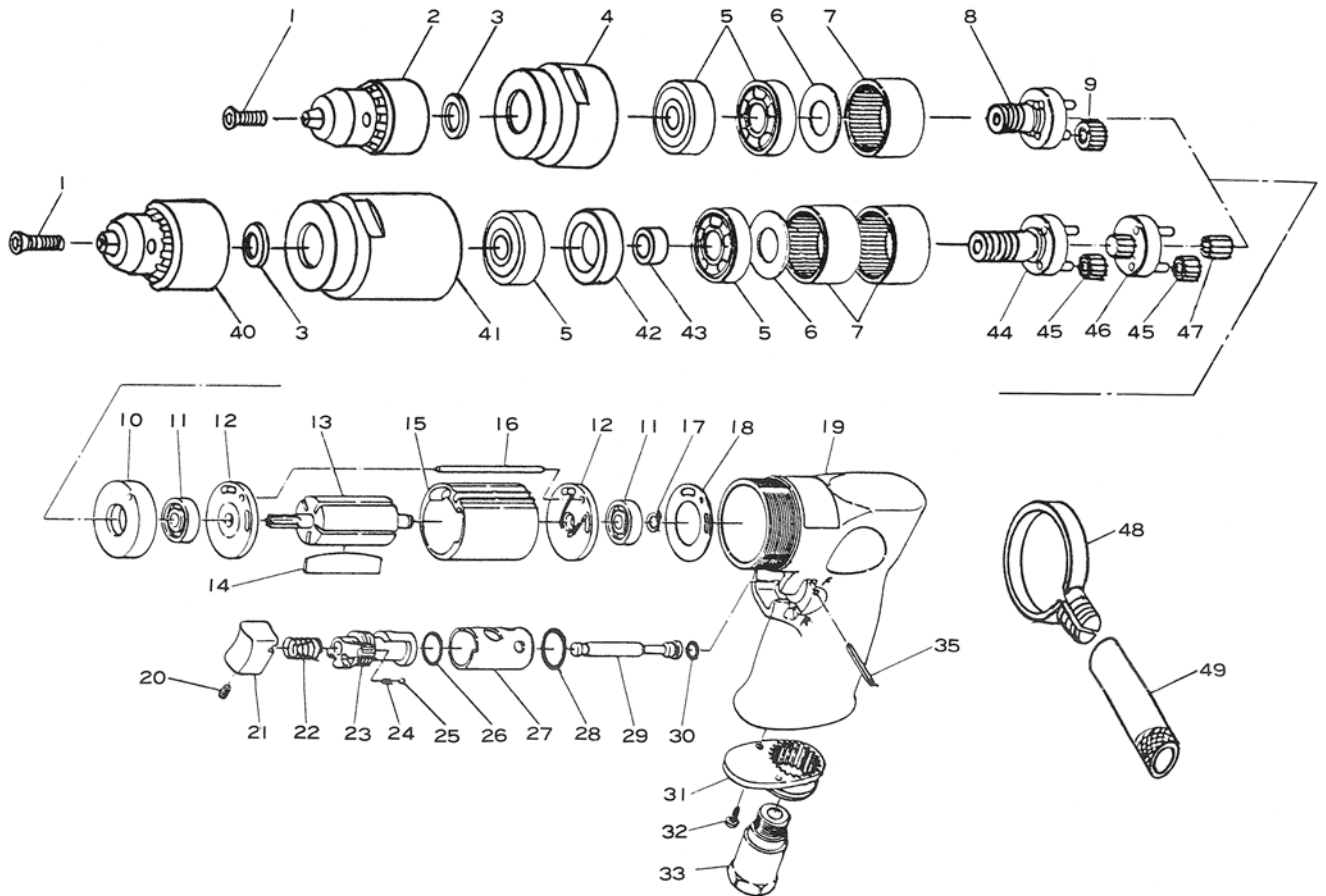


E5305

2,000 RPM 3/8" Reversible Drill

E5305-8

800 RPM 1/2" Reversible Drill



Ref. No.	Parts No.	Description	Q'ty	Ref. No.	Parts No.	Description	Q'ty
1	215-1	Chuck Screw	1	25	SB-25	Steel Ball	1
2	22BA	3/8" Drill Chuck w/Handle KK	1	26	990-26-1	O-Ring	1
3	680-7	Spacer	1	27	217-6	Reverse Bushing	1
4	215-41	Clamp Nut	1	28	P-14	O-Ring	1
5	6201-Z	Ball Bearing	2	29	217-3	Valve Stem	1
6	957-35	Washer	1	30	P-4	O-Ring	1
7	217-10	Internal Gear	1(2)	31	120-11	Deflector	1
8	215-40	Work Spindle incl. Pins (300-21x3)	1	32	JBM30-80	Screw	2
9	217-12	Planet Gear incl. Bush (217-33)	3	33	120-17SC	Inlet Bushing incl. Screen (680-28A)	1
10	217-18	Spacer	1	35	25-24	Roll Pin (2.5-24mm)	1
11	626	Ball Bearing	2	★40	31902	1/2" Drill Chuck w/Handle KK	1
12	217-14	End Plate	2	★41	215-8-5	Clamp Nut	1
13	217-17	Rotor	1	★42	215-8-2	Outer Collar	1
14	350-16	Rotor Blade	5	★43	215-8-3	Inner Collar	1
15	217-15	Cylinder	1	★44	215-8-1	Work Spindle incl. Pins (300-21x3)	1
16	200-34	Cylinder Pin	1	★45	217-8-2	Planet Gear incl. Bush (217-8-3)	6
17	JS-6	Retaining Ring	1	★46	217-8-5	Reduction Spindle incl. Pinion & Pins (217-8-6, 300-21x3)	1
18	217-32	Motor Gasket	1	★47	217-8-4	Pinion Gear	1
19	217-1	Motor Housing	1	★48	215-8-4	Clamp Ring	1
20	R-M40-60	Set Screw	1	★49	940-48	Handle	1
21	120-18	Trigger	1	*50	KK	Chuck Handle for 22BA, SM8K61 & 31902	1
22	120-31	Valve Spring	1	*◆51	30221	3/8" Cap. Keyless Chuck (3/8" Thd.)	
23	217-5	Reverse Lever	1	*◆52	31351	1/2" Cap. Keyless Chuck (3/8" Thd.)	
24	217-44	Rubber Cushion	1				

* Not Shown ◆ Option
★ For -5305-8

Printed in Japan
★★★★★ Nov. 2000