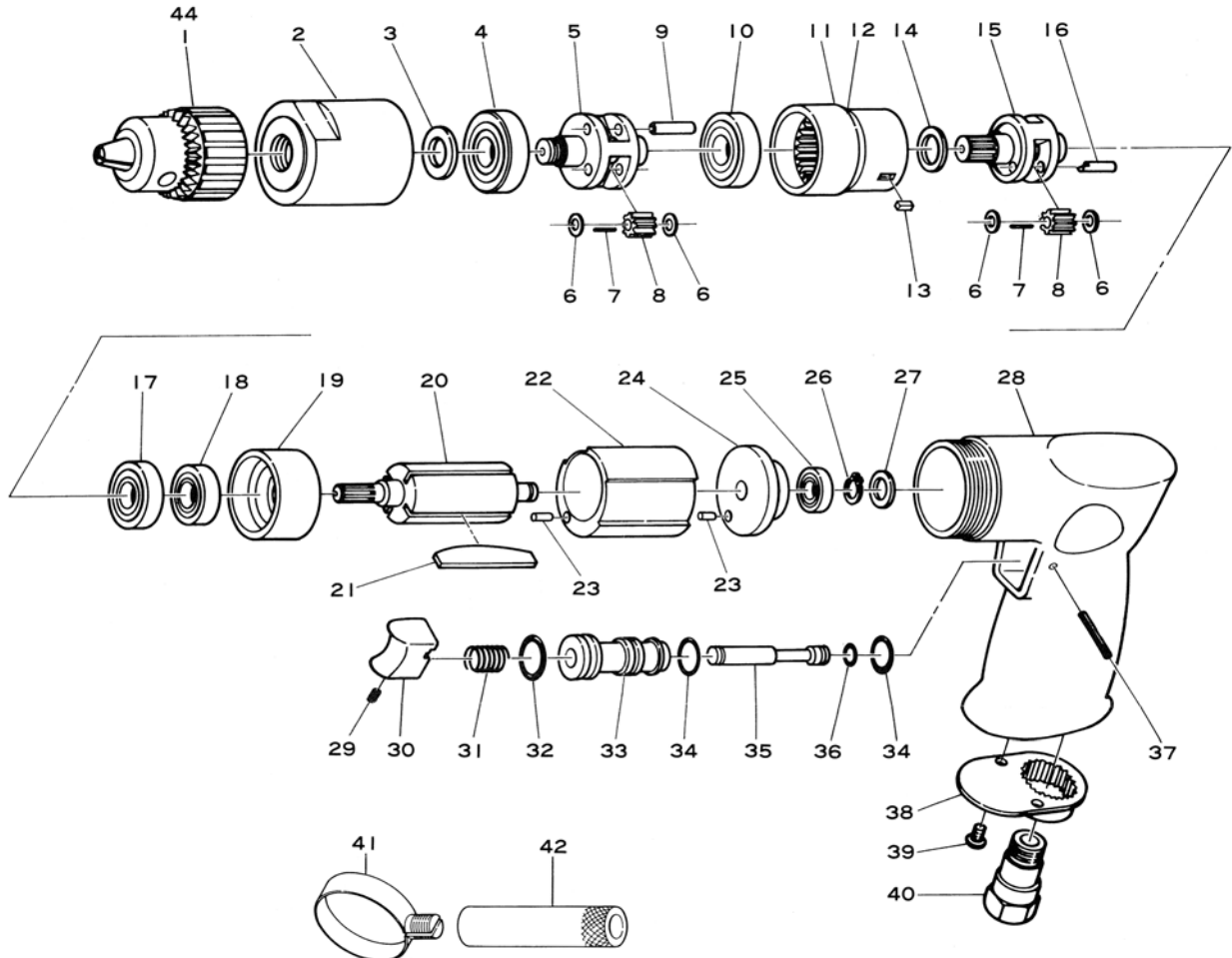


# E5200

## 500 RPM 1/2" Planetary Gear Drill



Ref. No.	Parts No.	Description	Qty	Ref. No.	Parts No.	Description	Qty
1	31902	1/2" Drill Chuck w/Handle KK	1	23	25-5	Roll Pin (2.5-5mm)	2
2	940-4	Clamp Nut	1	24	680-2	Rear Plate	1
3	940-44	Oil Seal	1	25	626	Ball Bearing	1
4	EE-5	Ball Bearing	1	26	JS-6	Retaining Ring	1
5	940-17	Work Spindle	1	27	680-34	Bearing Cap	1
6	940-45	Needle Roller Retainer	10	28	120-10	Motor Housing incl. Steel Ball (SB-1/4)	1
7	1593-94	Needle Roller	45	29	R-M40-60	Set Screw	1
8	940-6	Planet Gear	5	30	120-18	Trigger	1
9	940-19	Valve Pin	3	31	120-31	Valve Spring	1
10	6002	Ball Bearing	1	32	P-11	O-Ring	1
11	940-18	Internal Gear	1	33	120-13	Valve Bushing	1
12	450-35	O-Ring	1	34	P-10	O-Ring	2
13	940-46	Key	1	35	120-14	Valve Stem	1
14	940-47	Planet Cage Washer	1	36	P-4	O-Ring	1
15	940-43	Planet Cage	1	37	25-20	Roll Pin (2.5-20mm)	1
16	940-5	Planet Pin	2	38	120-11	Deflector	1
17	6001	Ball Bearing	1	39	JBM30-80	Screw	2
18	608	Ball Bearing	1	40	120-17	Inlet Bushing	1
19	680-4	Front Plate	1	41	940-8	Clamp Ring	1
20	940-9	Rotor	1	42	940-48	Handle	1
21	350-16	Rotor Blade	4	*43	KK	Chuck Handle for 22BA, SM8K61 & 31902	1
22	680-1	Cylinder	1	◆44	31351	1/2" Cap. Keyless Chuck (3/8" Thd.)	

\* Not Shown  
◆ Option

Printed in Japan  
★★★ Nov. 2000