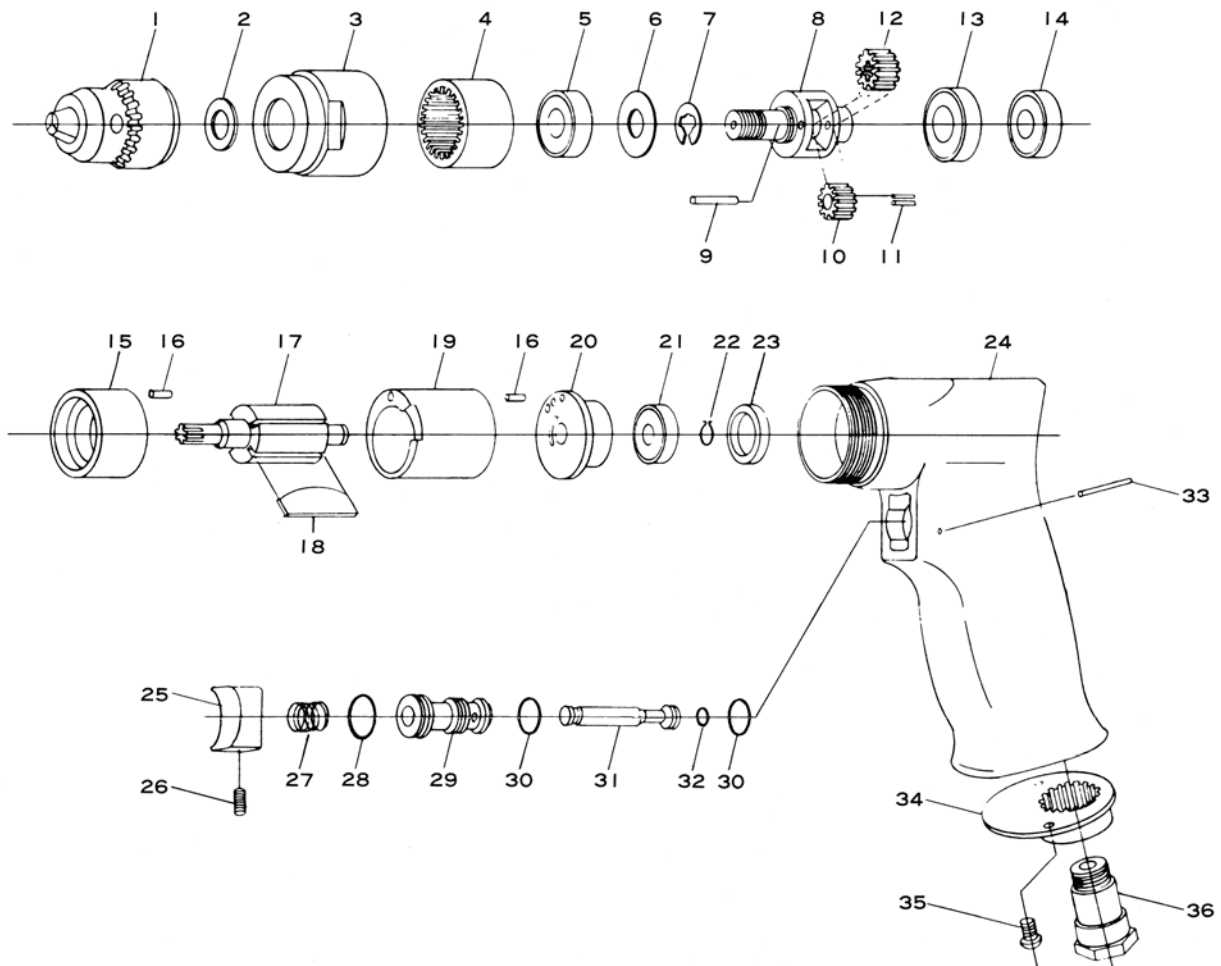


E5100

5,000 RPM 1/4" Planetary Gear Drill



Ref. No.	Parts No.	Description	Q'ty	Ref. No.	Parts No.	Description	Q'ty
1	41BA	3/8" Drill Chuck w/Handle	1	20	#680-2	Rear Plate	1
2	#680-7	Spacer	1	21	626	Ball Bearing	1
3	#680-8	Clamp Nut	1	22	JS-6	Retaining Ring	1
4	#680-9	Internal Gear	1	23	#680-34	Bearing Cap	1
5	EE-3ZZ	Ball Bearing	1	24	#120-10	Motor Housing	1
6	#680-22	Fiber Washer	1	25	#120-18	Trigger	1
7	IE-10	Retaining Ring	1	26	R-M40-60	Set Screw	1
8	#120-45-1	Planet Cage	1	27	#120-31	Valve Spring	1
9	#120-45-2	Planet Pin	2	28	P-11	O-Ring	1
10	#120-45-3	Planet Gear	2	29	#120-13	Valve Bushing	1
11	#1500-11-8	Needle Roller	22	30	P-10	O-Ring	2
12	#120-45-4	Pinion Gear	1	31	#120-14	Valve Stem	1
13	6001	Ball Bearing	1	32	P-4	O-Ring	1
14	608	Ball Bearing	1	33	25-20	Roll Pin (2.5-20mm)	1
15	#680-4	Front Plate	1	34	#120-11	Deflector	1
16	25-5	Dowel Pin (2.5-5mm)	2	35	JBM30-80	Screw	2
17	#680-5	Rotor	1	36	#120-17	Inlet Bushing	1
18	#350-16	Rotor Blade	4	*	K-30	Chuck Handle	1
19	#680-1	Cylinder	1				

* Not Shown

Printed in Japan
★★ Jun. 1993