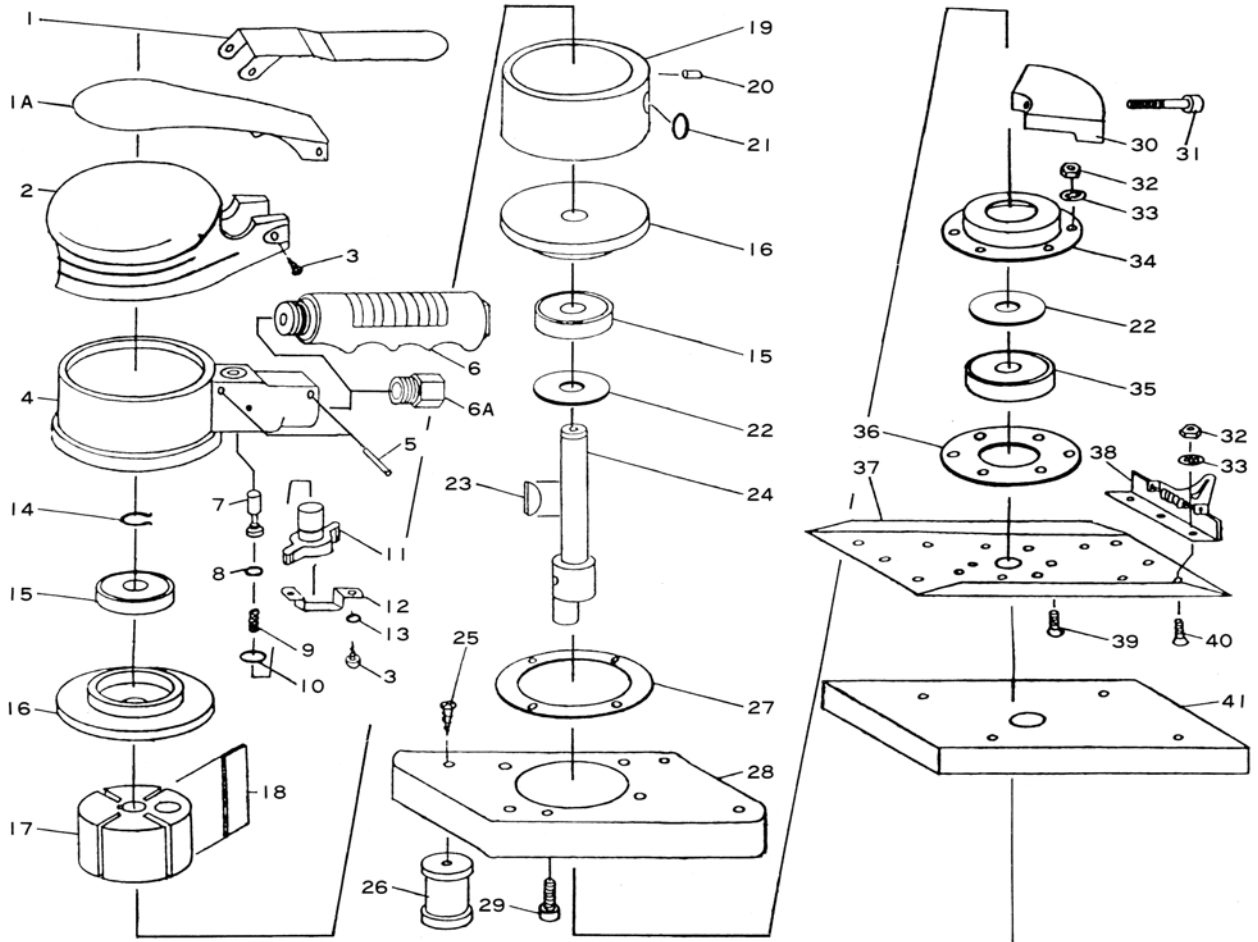


E3005

Orbital Sander (With Handle Grip)

E3006

Orbital Sander



| Ref. No. | Parts No. | Description | Q'ty | Ref. No. | Parts No. | Description | Q'ty |
|----------|-----------|--------------------------------|------|----------|-----------|----------------------|------|
| 1 | #480-13A | Throttle Lever (3005) | 1 | 21 | P-7 | O-Ring | 1 |
| 1A | #476-45 | Throttle Lever (3006) | 1 | 22 | #481-10 | Spacer | 2 |
| 2 | #475-26R | Housing Cover | 1 | 23 | #480-23 | Key | 2 |
| 3 | JIM35-50 | Screw | 4 | 24 | #475-12 | Crank Shaft | 1 |
| 4 | #475-3 | Motor Housing incl. Valve Bush | 1 | 25 | JIM50-100 | Screw | 8 |
| 5 | 40-30 | Lever Pin (4-30mm) | 1 | 26 | #640-48 | Rubber Support | 4 |
| 6 | #480-15 | Handle Grip incl. Grip Cover | 1 | 27 | #470-49 | Gasket | 1 |
| 6A | #680-18 | Inlet Bushing | 1 | 28 | #477-16A | Basement | 1 |
| 7 | #330-5 | Valve Stem | 1 | 29 | Z-M50-120 | Cap Screw | 4 |
| 8 | P-4 | O-Ring | 1 | 30 | #475-18 | Lower Weight | 1 |
| 9 | #350-7 | Valve Spring | 1 | 31 | Z-M40-300 | Cap Screw | 1 |
| 10 | P-8 | O-Ring | 1 | 32 | N1-M40 | Nut | 12 |
| 11 | #480-4 | Air Regulator | 1 | 33 | AT-40 | Washer | 12 |
| 12 | #480-16 | Regulator Retainer | 1 | 34 | #475-20 | Shoe Bearing Housing | 1 |
| 13 | HSW-35 | Washer | 2 | 35 | 6300LLU | Ball Bearing | 1 |
| 14 | JS-10 | Retaining Ring | 1 | 36 | #475-24 | Spacer | 1 |
| 15 | 6200ZZ | Ball Bearing | 2 | 37 | #475-21 | Shoe | 1 |
| 16 | #640-12A | End Plate | 2 | 38 | #475-23 | Paper Clip | 2 |
| 17 | #475-6TS | Rotor | 1 | 39 | E-M40-100 | Screw | 6 |
| 18 | #470-9 | Rotor Blade | 4 | 40 | E-M40-80 | Screw | 6 |
| 19 | #640-1 | Cylinder | 1 | 41 | #475-22 | Pad | 1 |
| 20 | 30-6 | Roll Pin (3-6mm) | 1 | | | | |