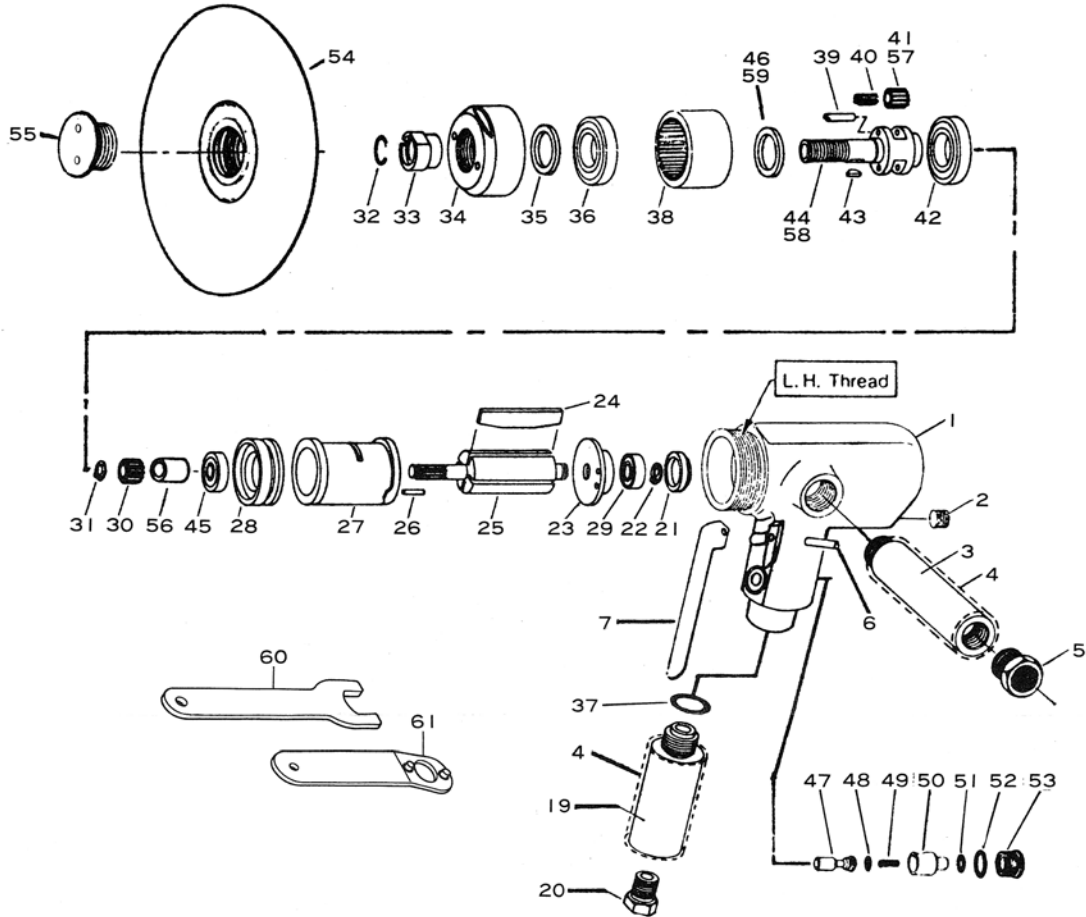


# E2400

## 7" Vertical Polisher



Ref. No.	Parts No.	Description	Q'ty	Ref. No.	Parts No.	Description	Q'ty
1	250-12	Motor Housing incl. Valve Bush (350-4)	1	37	P-16	O-Ring	1
2	PT-1/8	Plug	1	38	250-8	Internal Gear	1
3	650-31	Dead Handle	1	39	650-5	Planet Pin	2
4	650-44	Handle Cover	2	40	1500-13-8	Needle Roller	22
5	650-16	Exhaust Deflector	1	☆41	250-11	Planet Gear	2
6	30-24	Roll Pin (3-24mm)	1	42	6005	Ball Bearing	1
7	350-2	Throttle Lever	1	43	650-30	Key	1
19	650-27	Handle	1	☆44	250-1	Planet Cage	1
20	650-17	Inlet Bushing	1	45	6000-ZZ	Ball Bearing	1
21	650-43	Bearing Cap	1	☆46	250-18	Spacer	1
22	IS-8	Retaining Ring	1	47	350-5	Valve Stem	1
23	650-14	Rear Plate	1	48	P-5	O-Ring	2
24	650-13	Rotor Blade	4	49	350-7	Valve Spring	1
25	250-2	Rotor	1	50	350-8	Air Regulator	1
26	30-6	Roll Pin (3-6mm)	1	51	P-8	O-Ring	1
27	650-4	Cylinder	1	52	P-11	O-Ring	1
28	650-15	Front Plate	1	53	350-10	Valve Screw	1
29	608	Ball Bearing	1	54	820-52	Back Disc	1
☆30	250-22	Pinion Gear	1	55	820-54	Disc Nut	1
☆31	IS-9	Retaining Ring	1	☆56	650-53	Collar	1
32	650-46	Retaining Ring	1	★57	255-11	Planet Gear (Polisher)	2
33	650-9	Collar	1	★58	255-1	Planet Cage (Polisher)	1
34	250-3	Clamp Nut	1	★59	255-18	Spacer (Polisher)	1
35	G22-28-4	Oil Seal	1	60	650-24	Spanner Wrench (7/8")	1
36	6204	Ball Bearing	1	◆61	510-2	Pin Wrench (5 φ x30mm)	

☆For E-2300 ◆Option  
★For E-2400

Printed in Japan  
★★★★Jan. 2000