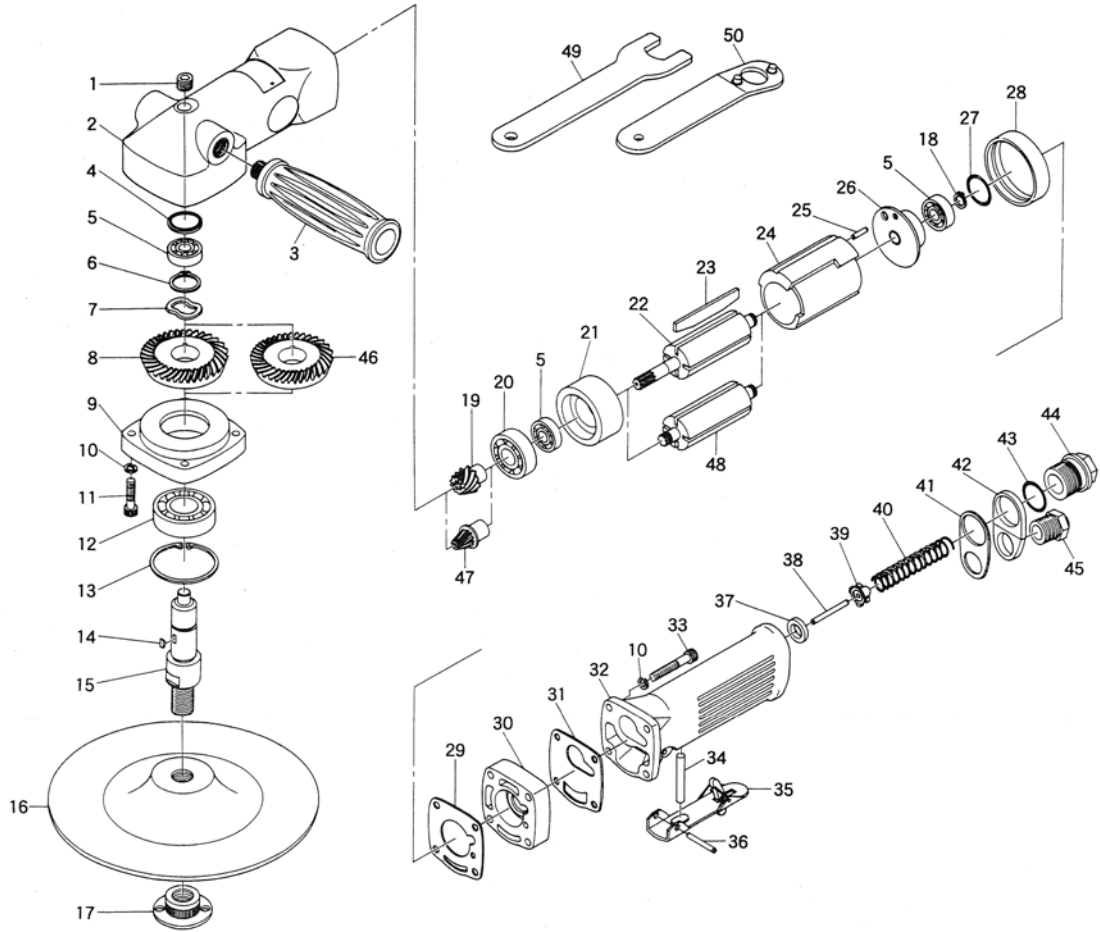


# E2351

## 7" Angle Sander



| Ref. No. | Parts No. | Description       | Q'ty | Ref. No. | Parts No. | Description                          | Q'ty |
|----------|-----------|-------------------|------|----------|-----------|--------------------------------------|------|
| 1        | PT-1/8    | Plug              | 1    | 26       | 650-14    | Rear Plate                           | 1    |
| 2        | 510A-1    | Motor Housing     | 1    | 27       | P-18      | O-Ring                               | 1    |
| 3        | 510-50    | Handle            | 1    | 28       | 510-51    | Housing Band                         | 1    |
| 4        | 510-24    | Spacer            | 1    | 29       | 510A-4    | Motor Gasket                         | 1    |
| 5        | 608       | Ball Bearing      | 3    | 30       | 510A-3    | Housing Spacer                       | 1    |
| 6        | JS-17     | Retaining Ring    | 1    | 31       | 510A-5    | Valve Housing Gasket                 | 1    |
| 7        | WW-170    | Wave Washer       | 1    | 32       | 510A-2    | Valve Housing                        | 1    |
| 8        | 510-25    | Bevel Gear        | 1    | 33       | Z-M50-320 | Cap Screw                            | 4    |
| 9        | 510-6     | Spindle Cap       | 1    | 34       | 510A-6    | Valve Pin                            | 1    |
| 10       | HSW-50    | Washer            | 8    | 35       | 350-2L    | Throttle Lever                       | 1    |
| 11       | Z-M50-220 | Cap Screw         | 4    | 36       | 30-24     | Roll Pin (3-24mm)                    | 1    |
| 12       | 6203-LU   | Ball Bearing      | 1    | 37       | 960-34    | Valve Seat                           | 1    |
| 13       | IO-40     | Retaining Ring    | 1    | 38       | 30-32     | Roll Pin (3-32mm)                    | 1    |
| 14       | 480-23    | Key               | 1    | ※39      | 960-35    | Valve                                | 1    |
| 15       | 510-46    | Spindle           | 1    | 40       | 510A-45   | Valve Spring                         | 1    |
| 16       | 820-52    | Back Disc         | 1    | 41       | 458-46    | Exhaust Gasket                       | 1    |
| 17       | 820-54    | Disc Nut          | 1    | 42       | 732-12    | Exhaust Retainer                     | 1    |
| 18       | JS-8      | Retaining Ring    | 1    | 43       | 991-7     | O-Ring                               | 1    |
| 19       | 510-26    | Pinion Gear       | 1    | 44       | 991-5SC   | Inlet Bushing incl. Screen (680-28A) | 1    |
| 20       | 6201      | Ball Bearing      | 1    | 45       | 650-16    | Exhaust Deflector                    | 1    |
| 21       | 510-8     | Front Plate       | 1    | ★46      | 515-25    | Bevel Gear                           | 1    |
| 22       | 660-2     | Rotor             | 1    | ★47      | 515-48    | Pinion Gear incl. Bush               | 1    |
| 23       | 650-13    | Rotor Blade       | 4    | ★48      | 515-21    | Rotor                                | 1    |
| 24       | 650-4PM   | Cylinder          | 1    | 49       | 660-19    | Spanner Wrench (19mm)                | 1    |
| 25       | 30-12     | Roll Pin (3-12mm) | 1    | 50       | 510-2     | Pin Wrench (5 φ x30mm)               | 1    |

★For E-2451  
 ※960-35A Valve Assy. incl. Roll Pin (30-32)

Printed in Japan  
 ★Jul. 2001