

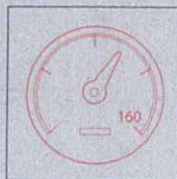


# SONSBEEK

## GENERAL PURPOSE TYRE INFLATOR



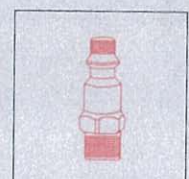
DUAL HEAD CHUCK



0 - 160 psi



0 - 1000 kpa



1/4" BSP INLET

- TRADE QUALITY CONSTRUCTION
- 360 DEGREE HOSE SWIVEL AT CHUCK ASSEMBLY
- QUALITY DIAPHRAGM GAUGE MECHANISM FOR DURABILITY
- RUBBER PROTECTIVE BOOT
- INFLATE/DEFLATE FUNCTIONS
- BRASS TRIGGER VALVE
- SPARE PARTS AVAILABLE
- PROUDLY MADE IN TAIWAN