



Toggler

Fastening Solution

Price List & Catalogue



Endeavour Quality Tools Manufactured

Around The World

Grip-on

Air-Boy
MADE IN DENMARK



S.E.K.
Made In Japan

SKC
MADE IN JAPAN

SUNFLAG
Made In Japan

TOHNICHI

SUPER

VESSEL
MADE IN JAPAN



Kabo Tools

AJAX **AP TOOLS**

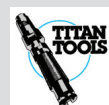
AMPCO

APEX

Security Fasteners
endeavour

iroda

spacetime



Endeavour Tools PTY LTD
ABN 13 006 307 213

Victoria - Head Office

50 Jellico Drive
Scoresby VIC 3179
Australia

Phone: +61 3 9753 3800
Fax: +61 3 9753 3933

Sydney

Suite 1/2, 12-18 Victoria Street East
Lidcombe NSW 2141
Australia

Phone: +61 2 9646 4222
Fax: +61 2 9646 5399

TOGGLER High Performance Anchors

Distributor Price List

Box Program

SnapSkru® Self-Drilling Drywall Anchors		Pricing Per Box
Product Code	Description	List Price Excl. GST
T30031	100 SPM™ MINI anchors [3/8"-5/8" drywall]	\$29.95
T30011	100 SP™ anchors [3/8"-5/8" drywall]	\$42.95

SNAPTOGGLE® Steel Toggle Bolts (1010 CRS)			Pricing Per Box
Product Code	Thread Size	Description	List Price Excl. GST
T25013	3/16" - 24	50 BA™ toggle bolts only in box	\$58.95
T25029	M5	50 BM5 toggle bolts only in box	\$58.95
T25014	1/4" - 20	50 BB™ toggle bolts only in box	\$59.95
T25024	M6	50 BM6 toggle bolts only in box	\$59.95
T21017	5/16" - 18	25 BE™ toggle bolts only in box	\$53.95
T21031	M8	25 BM8 toggle bolts only in box	\$53.95
T21015	3/8" - 16	25 BC™ toggle bolts only in box	\$57.95
T21035	M10	25 BM10 toggle bolts only in box	\$57.95
T21016	1/2" - 13	25 BD™ toggle bolts only in box	\$57.95
T21049	3/16" - 24	50 BAL™ toggle bolts only in box (2" - 9 1/2" grip range)	\$119.95
T21064	M5	50 BM5L toggle bolts only in box (2" - 9 1/2" grip range)	\$124.95
T21050	1/4" - 20	50 BBL™ toggle bolts only in box (2" - 9 1/2" grip range)	\$119.95
T21025	M6	50 BM6L toggle bolts only in box (2" - 9 1/2" grip range)	\$124.95

ALLIGATOR® Solid-Wall Anchors			Pricing Per Box
Product Code	Drill Size	Description	List Price Excl. GST
T13103	3/16"	200 AF5™ anchors w/flange in box	\$42.95
T13101	1/4"	100 AF6™ anchors w/flange in box	\$31.95
T13102	5/16"	100 AF8™ anchors w/flange in box	\$35.95
T13106	3/16"	200 A5™ flangeless anchors in box	\$41.95
T13104	1/4"	100 A6™ flangeless anchors in box	\$27.95
T13105	5/16"	100 A8™ flangeless anchors in box	\$34.95
T13107	3/8"	50 A10™ flangeless anchors in box	\$38.95



Box Program

TOGGLER® Plastic Hollow-Wall Anchors		Pricing Per Box
Product Code	Description	List Price Excl. GST
T11009	100 TA® anchors for 1/8" - 1/4" walls & 3 keys in box	\$34.25
T11010	100 TB® anchors for 3/8" - 1/2" walls & 3 keys in box	\$35.25
T11011	100 TC® anchors for 5/8" - 3/4" walls & 3 keys in box	\$39.95
T11021	50 TD™ anchors for 1" walls & 3 keys in box	\$27.95

SNAPTOGGLE® 304 Stainless Steel Toggler Bolts			Pricing Per Box
Product Code	Thread Size	Description	List Price Excl. GST
T25020	3/16" - 24	50 BAS™ toggle bolts only in box	\$214.95
T25030	M5	50 BM5S toggle bolts only in box	\$214.95
T25021	1/4" - 20	50 BBS™ toggle bolts only in box	\$214.95
T25026	M6	50 BM6S toggle bolts only in box	\$214.95
T21032	M8	25 BM8S toggle bolts only in box	\$184.95
T21022	3/8" - 16	25 BCS™ toggle bolts only in box	\$184.95
T21036	M10	25 BM10S toggle bolts only in box	\$184.95
T21023	1/2" - 13	25 BDS™ toggle bolts only in box	\$184.95
T21059	3/16" - 24	50 BALS™ toggle bolts only in box (2" - 9 1/2" grip range)	\$257.95
T21065	M5	50 BM5SL toggle bolts only in box (2" - 9 1/2" grip range)	\$257.95
T21060	1/4" - 20	50 BBLS™ toggle bolts only in box (2" - 9 1/2" grip range)	\$257.95
T21061	M6	50 BM6SL toggle bolts only in box (2" - 9 1/2" grip range)	\$257.95

SPECIALTY ANCHORS		Pricing Per Box
Product Code	Description	List Price Excl. GST
T11012	100 TH® picture hook anchors in box	\$39.95
T11022	50 TBS2® pegboard anchors in box	\$23.95
T11023	50 TBS1® shelving anchors in box	\$23.95
T11024	50 TBW® wire shelf anchors in box	\$35.95
T11031	50 Wire harness anchors	\$35.95
T11032	50 Wire harness anchors	\$38.95
T11033	50 Wire harness anchors	\$42.95

Patented under one or more of the following U.S. Patent Nos.: 4,993,901; 5,028,186; 5,161,296; 5,938,385; 6,161,999; 7,144,212; 7,320,569 and foreign counterparts thereof and of 4,650,386 & 4,752,170. Other worldwide patents pending. TOGGLER and typeface, logo symbol, TA, TB, TC, TH, ALLIGATOR, SnapSkru, and SNAPTOGGLE are worldwide registered trademarks of Mechanical Plastics Corp. AF5, AF6, AF8, A5, A6, A8, A10, BA, BB, BC, BD, BE, (BxS series), SP, SPM, TBS1, TBS2, TBW, TD, T35, and T39 are worldwide trademarks of Mechanical Plastics Corp.

TOGGLER[®] High-Performance[™] Anchors

Fast, easy & secure anchoring
in ALL building materials

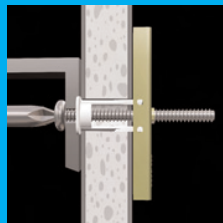
Hollow Materials
Drywall, Plaster, Block...

Solid Materials
Concrete, Brick, Stone...

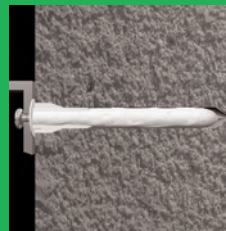
**HEAVY
Duty**

Large TV's, Mirrors,
Bookshelves, Sinks,
Cabinets...

SNAPTOGGLE[®]
Toggle Bolts



ALLIGATOR[®]
Solid-Wall Anchors



Anchor expands up to
2x its length, bonding
screw to the wall!

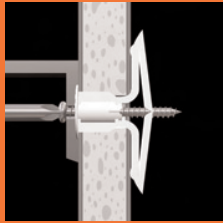
**HEAVY
Duty**

Lighting fixtures,
Plumbing fixtures,
Partitions, Grab bars,
Shelving, Cabinets...

**MEDIUM
Duty**

Bathroom accessories,
Window treatments,
Speaker mounts...

TOGGLER[®]
Plastic Toggle Anchors



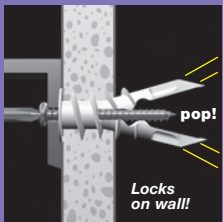
**to
LIGHT
Duty**

Alarms, Thermostats,
Smoke detectors...

**MEDIUM
- LIGHT
Duty**

Small lighting fixtures,
Picture frames...

SnapSkru[®] Regular
Self-Drilling Drywall Anchors



In All Walls... **Hollow**
Solid ... Drywall to Concrete

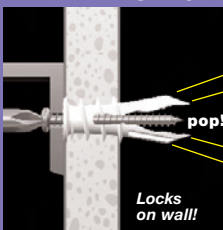
TOGGLER[®] Anchors
for Special Projects



**LIGHT
Duty**

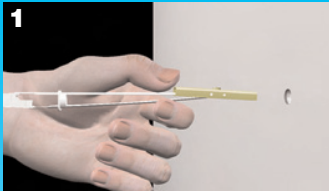
Alarms, Thermostats,
Smoke detectors...

SnapSkru[®] MINI
Self-Drilling Drywall Anchors

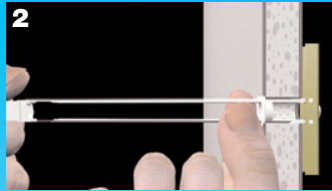


SNAPTOGGLE® Heavy-Duty Toggle Bolts

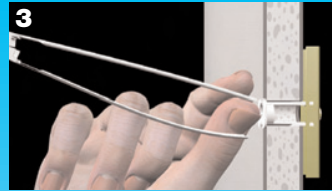
Like having an extra pair of hands behind the wall!



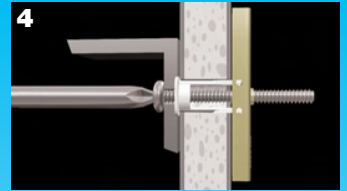
1
Drill hole. Hold metal channel flat alongside plastic straps & slide channel through the hole. Minimum clearance behind wall: only 1 7/8" (48mm).



2
Hold ends of straps together between thumb & forefinger and pull toward you until channel rests behind wall. Ratchet cap along straps with other hand until flange of cap is flush with wall.



3
Place thumb between straps at wall. Push thumb side to side, snapping off straps level with flange of cap.



4
Place item over flange. Insert bolt and tighten until snug against item, then stop. Use machine screw or bolt to match thread in metal channel. Push thumb side to side, snapping off straps level with flange of cap.

Benefits:

- **Strong** - up to **2x the load** of an old-fashioned wing toggle
Solid metal channel resists vibration & shock
- **Save time** - at least **6 minutes** per anchor v. wing toggles
Can use a screw gun; anchor does not spin
- **Save money** - turn a 2-person job into a 1-person job
Use a shorter bolt (no need to carry a wing through the wall)
- New strap design **snaps off flush** & does not break prematurely
- **Smallest installation hole** for each bolt size
- New golden plating is **7x more corrosion-resistant**
- **Reusable** in same hole - remove bolt without losing the anchor

Also available in
RoHS-compliant plating
or **304 stainless steel**



Ultimate Tensile Load in Pounds

Thread:	3/16"-24	1/4"-20	5/16"-18	3/8"-16	1/2"-13
Anchor:	BA	BB	BE	BC	BD
1/2" Drywall	238	265	270	275	275
5/8" Drywall	356	356	480	576	576
Concrete block	802	1,080	1,400	1,745	2,038
Steel plate	918	1,283	1,680	1,692	2,605
Drill diameter:	1/2"	1/2"	3/4"	3/4"	3/4"
Grip range:	3/8"-3 5/8"	3/8"-3 5/8"	3/8"-2 1/2"	3/8"-2 1/2"	3/8"-2 1/2"
Long strap code:	BAL	BBL			
Grip range:	2"-9 1/2"	2"-9 1/2"			

These results are for zinc-plated steel anchors. Stainless steel channels with stainless steel bolts held greater loads in concrete & in steel plate. Long straps for roofing and for very thick walls. **NOTE:** 10-24 = 3/16"-24 Bolt length = Item thickness + wall thickness + 1/2" (13mm).

Metric sizes available:

Anchor:	BM5	BM6	BM8	BM10
Thread:	M5	M6	M8	M10
Drill diameter:	13mm	13mm	19mm	19mm
Grip range:	10-92mm	10-92mm	10-64mm	10-64mm
Long strap code:	BM5L	BM6L		
Grip range:	51-240mm	51-240mm		

- Cinder block
- Concrete block
- Gypsum board
- Drywall
- Plasterboard
- Composite panels
- Plaster
- Stucco
- Fiberglass
- Cement board
- Greenboard

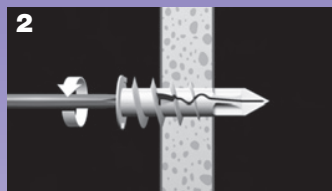
- Flat panel TVs
- DSS antennas
- Lighting fixtures
- TV mounts
- Roofs & decking
- Marine applications
- Window treatments
- Heavy machinery
- ADA hardware
- Office furniture
- Hand rails
- Grab bars
- Partitions
- Heavy fans
- Sinks
- Cabinets
- Shelving
- Solar panels
- Garage doors
- Reinstallations

SNAPSKRU[®] Self-Drilling Drywall Anchors

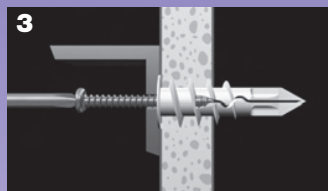
Fast & easy! ...Hear it "pop" & lock for extra security!



1 Press tip of SnapSkrU anchor into drywall using #2 Phillips screw-driver or screw gun.



2 Drive anchor clockwise into drywall until anchor stops flush with wall.



3 Place item over anchor and insert screw.



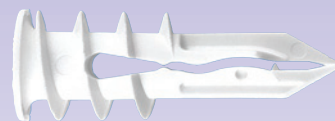
4 Tighten screw flush with item. Screw "pops" open anchor, locking anchor on wall.

Benefits:

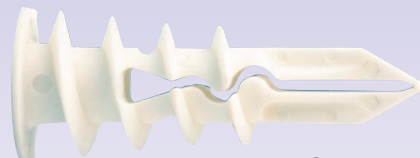
- **Fast & easy** to install— NO drill needed
- **Strongest holding** of all self-drilling drywall anchors
- Holds securely in **walls & ceilings**
Unique locking action **resists shock & vibration**
- Audible "**pop**" indicates correct installation
- Built-in "positive stop" resists overdrilling
- Does **not destroy** the wall—can remove screw & item, leaving anchor in wall for reuse
- Works with largest range of screw sizes:
 - SPM MINI** = #6,#8 (**#6 preferred**)
 - SP Regular**= #6,#8,#10 (**#8 preferred**)
- Unique tip does not wander on wall...drills in accurately & easily

MINI SPM Anchor Benefits:

- Stronger than larger anchors!
- Makes only a tiny 1/4" hole
- Small 0.4" head
hides behind fixture
- Head sits flush on wall or ceiling
- Works with both #6 & #8 screws



MINI SPM anchor



Regular SP anchor

Ultimate Load in Pounds

Anchor:	MINI	Regular	MINI	Regular
	Tensile		Shear	
3/8" Drywall	57	57	105	108
1/2" Drywall	65	79	131	149
5/8" Drywall	95	135	175	178
Screw tested:	#6 x 1 1/4"	#8 x 1 1/2"	#6 x 1 1/4"	#8 x 1 1/2"

Specifications:

	UNC		Metric	
	MINI	Regular	MINI	Regular
Head diameter:	0.4"	0.6"	11mm	16mm
Screw sizes:	#6, #8	#6, #8, #10	Ø3.5, 4mm	Ø3.5, 4, 4.5mm
Preferred screw:	#6	#8	Ø3.5mm	Ø4mm
Screw length:	item + 1"	item + 1 1/4"	item + 25mm	item + 32mm
* Max. item thickness:	1/2"	3/4"	13mm	19mm
*with screw length:	1 1/4"	1 1/2"	32mm	38mm

* For thicker items, use longer screw

For Fast, Secure

Holding in:

3/8" through 5/8" [9.5-16mm]

- Gypsum board
- Drywall • Wallboard
- Plasterboard

Ideal for Mounting:

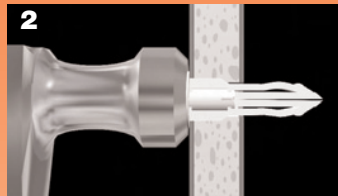
- Bathroom accessories
- Window treatments
- Lighting fixtures
- Smoke detectors
- CO detectors
- Picture frames
- Mirrors
- Alarms
- Shelving
- Thermostats
- Electric boxes

TOGGLER® Plastic Toggle Anchors

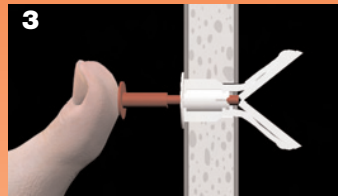
Easy, secure, vibration-proof anchoring for medium loads!



1 Drill 5/16" diameter hole (Ø 8mm). Fold anchor in middle.



2 Insert anchor in hole and tap flush. Only 3/4" (19mm) clearance needed behind the wall. Only 1/2" (13mm) for the TA anchor.



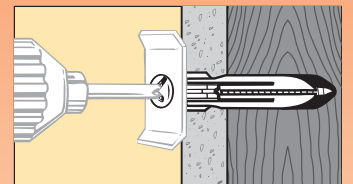
3 Insert key to pop anchor open behind hollow wall (not necessary for thick or solid walls). Do not hammer key. Remove key.



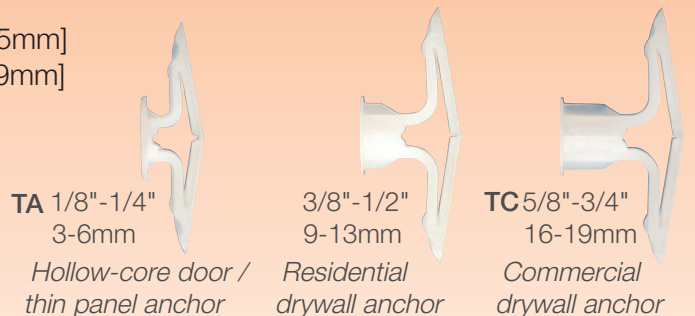
4 Place item over anchor. Insert screw and tighten until flush with item—then stop.

Benefits:

- **Strongest** of all plastic toggle anchors
- **Vibration & shock proof** - won't damage walls or ceiling
Used to install the sprinkler system in the Tokyo subway
- Can use a screw gun - anti-rotation fins **prevent spinning**
- **Greatest grip range** for each anchor:
 - TA 1/8"-1/4" TC 5/8"-3/4" T35 13/8" [35mm]
 - TB 3/8"-1/2" TD 1" [26mm] T39 11/2" [39mm]
- **Greatest screw range**
 - #6 through #14 TA = #8 through #12
 - [Ø 3.5-6mm dia.] [Ø 4-5.5mm dia.]
- All install in only a small 5/16" hole [Ø 8mm]
- Pre-install **without the screw**
- Key-activated **positive locking** system
- Corrosion-proof, nonmagnetic, nonconductive



Each anchor holds securely, even if it hits an unexpected solid, like a stud or the door frame.



Ultimate Load in Pounds

Anchor:	TA®	TB®	TC®
	Tensile		
Plywood	1/4" 124	1/2" 175	-
3/8" Drywall	-	97	-
1/2" Drywall	-	143	-
5/8" Drywall	-	102*	159
	Shear		
Plywood	1/4" 265	-	-
3/8" Drywall	-	126	-
1/2" Drywall	126*	167	-
5/8" Drywall	-	214*	237
<i>Grip range:</i>	1/8"-1/4"	3/8"-1/2"	5/8"-3/4"
<i>Drill diameter:</i>	5/16"	5/16"	5/16"
<i>Screw tested:</i>	#8 x 1 1/4"	#8 x 1 1/2"	#8 x 1 3/4"

* Used as wedge anchors [not toggled fully open] in walls thicker than the anchor's grip range

For Medium Holding in:

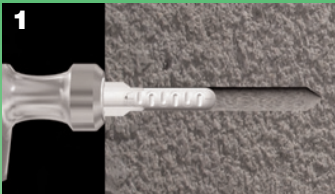
- Drywall
- Gypsum board
- Plasterboard
- Greenboard
- Fiberglass
- Hollow-core doors
- Thin paneling
- Sheet metal
- Acoustic ceilings
- Masonite® panels

Ideal for Mounting:

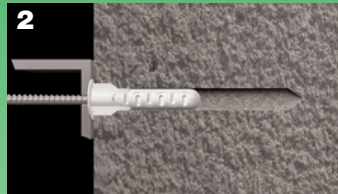
- Towel bars
- Window treatments
- Bath accessories
- Kitchen accessories
- Smoke detectors
- CO detectors
- Electric boxes
- Lighting fixtures
- Mirrors on hollow-core doors
- Signs
- Alarms
- Clocks
- Shelving
- Telephones
- Thermostats
- Marine hardware
- Speaker mounts

ALLIGATOR[®] Solid-Wall Anchors

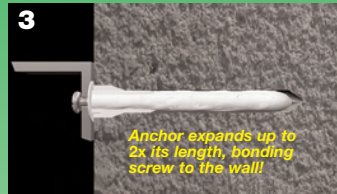
Heavy-duty anchoring in concrete & brick ... even in tile!



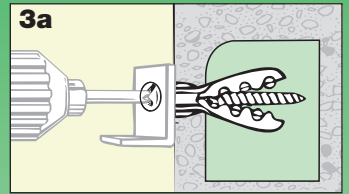
1
Drill hole same diameter as anchor.
Push in anchor and tap flush.



2
Place item over anchor, insert



3
Anti-rotation fins prevent spinning while the ALLIGATOR anchor expands along the screw in solid walls ... up to 2x its original length.



3a
In unexpected cavities or in hollow walls (hollow brick, hollow block, tile over drywall, etc.), the screw opens the anchor and its thread locks into the anchor's teeth.

Benefits:

- **Strongest** - holds up to **2x more** than metal, adhesive, epoxy, and chemical anchors*
- Anchor **bonds screw** to concrete, brick & stone - **sealing the hole** [prevents moisture from entering hole]
- Sets instantly • Non-toxic • Rustproof • No-shelf life worry
- Resists **vibration & shock in both** solid & hollow walls
- Can use a screw gun - anti-rotation fins prevent spinning
- **Greatest screw range** for each anchor:
[see Specifications chart below]
- **More versatile** than metal or chemical anchors - holds securely even in **hollow walls / ceilings**

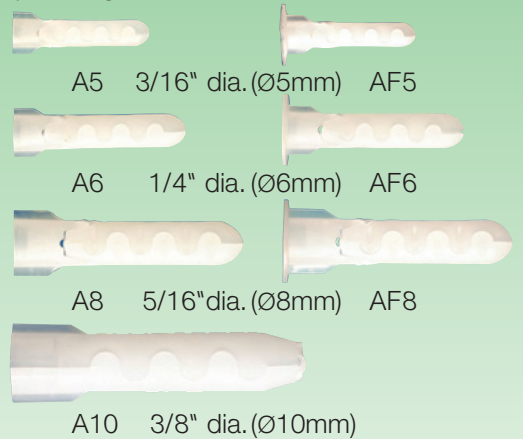
* with the same screw diameter and embedment depth

Flush-mount

for through-the-fixture / push-through installation

Flanged

for hollow brick, drywall,



Ultimate Load in Pounds

Anchor & drill dia.:	3/16"	1/4"	5/16"	3/8"
Anchor:	A5/AF5	A6/AF6	A8/AF8	A10
Tensile				
4000 psi Concrete	2,316	2,633	3,083	4,270
1/2" Drywall	57	69	85	N/A
Shear				
1/2" Drywall	125	153	171	N/A

Specifications:

Anchor:	UNC			
	A5/AF5	A6/AF6	A8/AF8	A10
Anchor & drill diameter:	3/16"	1/4"	5/16"	3/8"
Screw sizes:	#4 - #10	#6 - #14	#8 - 5/16"	#10 - 3/8"
Minimum hole depth:	1 1/2"	1 3/4"	2"	2 1/2"
Metric				
Anchor & drill diameter:	5mm	6mm	8mm	10mm
Screw sizes:	Ø3 - 5mm	Ø3.5 - 6mm	Ø4 - 8mm	Ø4.5 - 10mm
Minimum hole depth:	40mm	45mm	50mm	65mm

For Maximum Holding in:

- Concrete
- Brick
- Stone
- Masonry
- Cinder block
- Aerated concrete
- Wood
- Stucco
- Plaster
- Tile
- Drywall
- Greenboard
- RTA furniture
- Foam insulated panels

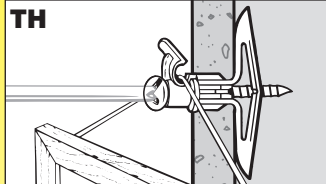
Ideal for Mounting:

- Electrical equipment
- Lighting fixtures
- Plumbing fixtures
- Partitions
- Hand rails & grab bars
- Telephone equipment
- Shelving
- Cabinets
- Awnings
- Circuit breakers
- Framing
- Alarms
- Signs
- DSS antennas
- Fire extinguishers
- Window frames
- Door jambs
- Transformers
- Storefront gates
- Smoke detectors

TOGGLER[®] Specialty Anchors

Simplify specialized installations!

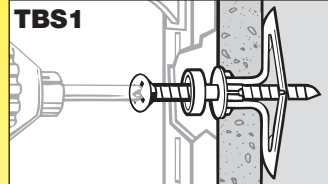
Hang wall decor quickly, easily & securely



Specially designed **built-in hook** holds the weight of the picture on the screw - **not** below it. This provides maximum holding and **prevents pull-out!**

Ideal for hanging paintings, prints, mirrors, and **anything framed.**

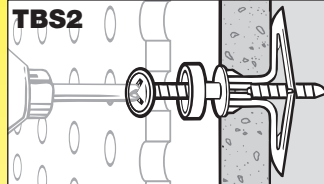
No more fumbling with shelving standards



Built-in spacer prevents the anchor from being jacked out of the wall during installation.

Also useful installing equipment on warm or wet walls when **ventilation** is need installed object.

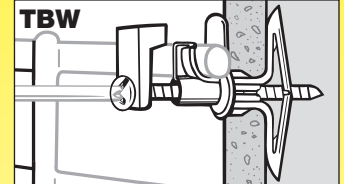
Give peg hooks the space they need



Built-in spacer holds the pegboard the proper distance from the wall to allow peg hooks to work.

This eliminates the need for furring strips, **saving time & money**, and allows **full use** of the pegboard space.

Installing wire shelving securely is a snap



Includes a **locking retainer clip** so shelves **don't tip**, even when the load they support is distributed unevenly or near the edge. Ideal for use with systems like **ClosetMaid[®]**.

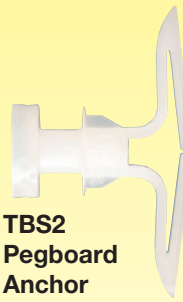
Perfect for closet systems & kitchen, garage or workshop shelves.



TH[®]
Hook
Anchor



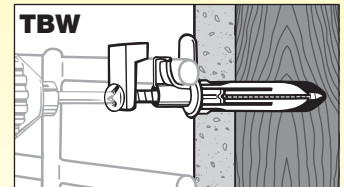
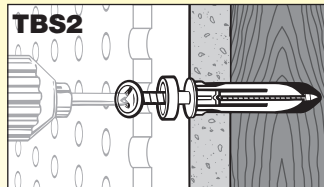
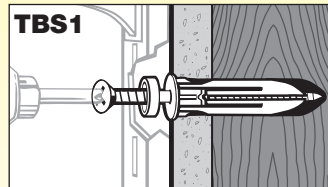
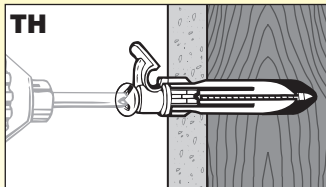
TBS1
Shelving
Anchor



TBS2
Pegboard
Anchor



TBW
Wire Shelf
Anchor
with locking retainer clip



All TOGGLER specialty anchors hold securely, even if you hit a solid area, like a stud ... or i **concrete, brick & stonen.**

Industry safety standards recommend **1/4 of ultimate test load.** See MPC technical bulletins for full results of tests and for safety factors that should be applied when evaluating an application ... also for proper screw sizes and lengths.

All pull-out values are from independent laboratory tests done according to U.S. Government standards. They should be used as guides only. The age, condition, and capacity of the substrate must be considered.

Holding strength for a TOGGLER BRAND anchor varies directly with the strength of the wall material, the screw size & the extent of the screw engagement—and inversely with variations in hole diameter and the distance of the load from the wall.

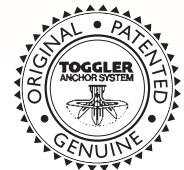
ALL **TOGGLER** BRAND anchors are proudly made in the USA

www.togglor.com
Installation videos & technical bulletins

Satisfaction Guaranteed

TOGGLER Anchor System is proud of its unique, patented anchors, but if they fail to perform to your satisfaction, please send the sales receipt together with any unused anchors for a full refund. Your comments would be appreciated.

This guarantee is not to be construed as conferring any liability beyond the purchase price of the product.



MECHANICAL PLASTICS CORP.
P.O. Box 554 • 444 Saw Mill River Road
Elmsford, NY 10523 USA
1-888-TOGGLER [1-888-864-4537]
Fax: (914-347-3634) Tel: (914)347-2727
Email: info@togglor.com

TOGGLER anchors are patented under one or more of U.S. Patent Nos. 4,993,901; 5,028,186; 5,161,296; 5,938,385; 6,161,999; 7,144,212; and foreign counterparts thereof and of 4,650,386; 4,673,150; 4,752,170; and 4,878,790. Other patents pending. TOGGLER and typeface, logo symbol, TA, TB, TC, TH, SNAPTOGGLE, SnapSkru, and ALLIGATOR are worldwide registered trademarks of Mechanical Plastics Corp. ClosetMaid is a registered trademark of ClosetMaid, a division of Emerson[™] Electric. Masonite is a registered trademark of Masonite International Corp. © 2007 Mechanical Plastics Corp. Printed in the USA 0907CAT

Warranty

Products that are faulty due to defective materials or faulty workmanship will at the discretion of Endeavour Tools be either repaired or replaced. Any item which is claimed as a warranty is to be returned freight prepaid. Warranty will not apply if the tool has been abused, used for a purpose other than which it is intended, or the fault is due to fair wear and tear. Endeavour Tools reserves the right to require evidence of purchase.



endeavourtools

Endeavour Tools PTY LTD
ABN 13 006 307 213

Victoria - Head Office

50 Jellico Drive
Scoresby VIC 3179
Australia

Phone: +61 3 9753 3800
Fax: +61 3 9753 3933

Sydney

Suite 1/2, 12-18 Victoria Street East
Lidcombe NSW 2141
Australia

Phone: +61 2 9646 4222
Fax: +61 2 9646 5399

Endeavour Tools

Complete Product Range

Air Tools

Air BoyTM
MADE IN DENMARK



Hand Tools

KaboTools[®]

S.E.K.
Made In Japan

SUNFLAG
Made In Japan

VESSEL
MADE IN JAPAN

Grip-on
THE RIGHT TOOL FOR THE JOB

Automotive Tools

AP TOOLSTM

iroda[®]

Industrial Tools

APEX[®]

AJAX[®]



Fastening Solutions

endeavour **Security Fasteners**TM



Safety Tools



spacetimeTM

Lifting & Welding

