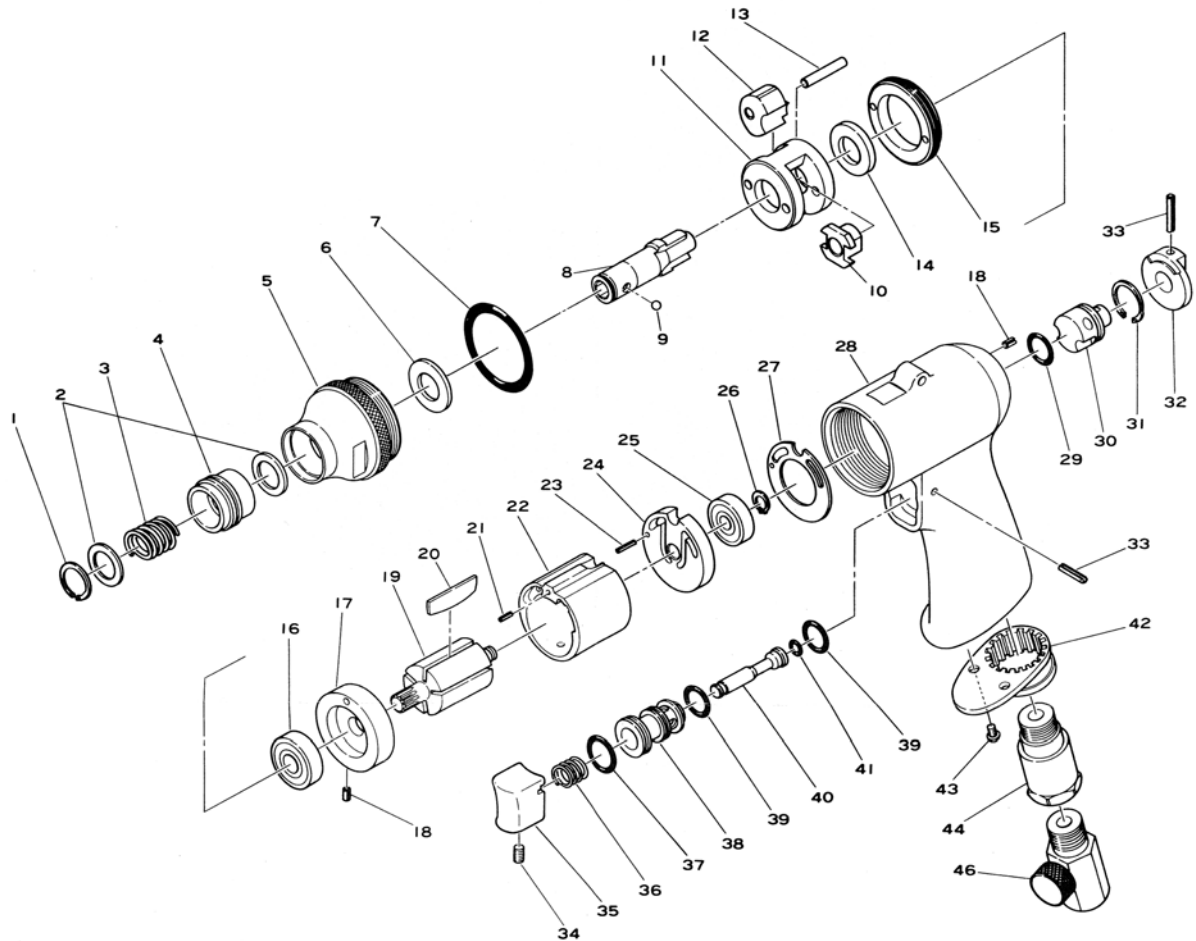


E-1065

Impact Driver



Ref. No.	Parts No.	Description	Q'ty	Ref. No.	Parts No.	Description	Q'ty
1	GV-12	Retaining Ring	1	24	191-6	Rear Plate	1
2	430-52	Retaining Washer	2	25	626	Ball Bearing	1
3	430-53	Chuck Sleeve Spring	1	26	JS-6	Retaining Ring	1
4	430-51	Chuck Sleeve	1	27	191-8	Motor Gasket	1
5	190-6	Hammer Case incl. Anvil Bush (360-20)	1	28	192-10	Motor Housing incl. Reverse Bush (192-3)	1
6	190-8	Anvil Spacer	1	29	990-26-1	O-Ring	1
7	982-31	O-Ring	1	30	192-2	Reverse Valve	1
8	190-9	1/4" Hex. Anvil	1	31	OV-16	Retaining Ring	1
9	SB-3/16	Steel Ball	1	32	192-4	Reverse Lever	1
10	190-12	Cam	1	33	25-20	Roll Pin (2.5-20mm)	2
11	190-13	Hammer Cage	1	34	R-M40-60	Set Screw	1
12	190-10	Hammer Dog	2	35	120-18	Trigger	1
13	190-11	Hammer Pin	2	36	120-31	Valve Spring	1
14	190-14	Spacer	1	37	P-11	O-Ring	1
15	190-16	Lock Nut	1	38	120-13	Valve Bushing	1
16	608	Ball Bearing	1	39	P-10	O-Ring	2
17	190-19	Front Plate	1	40	120-14	Valve Stem	1
18	25-5	Roll Pin (2.5-5mm)	2	41	P-4	O-Ring	1
19	190-21	Rotor	1	42	120-11	Deflector	1
20	190-1	Rotor Blade	5	43	JBM30-80	Screw	2
21	20-8	Roll Pin (2-8mm)	1	44	120-17SC	Inlet Bushing incl. Screen (680-28A)	1
22	191-7	Cylinder	1	46	181-45	Air Regulator	1
23	20-12	Roll Pin (2-12mm)	1	*47	181-51	+Bit No.2	1

* Not Shown

Printed in Japan
★Jul. 1998