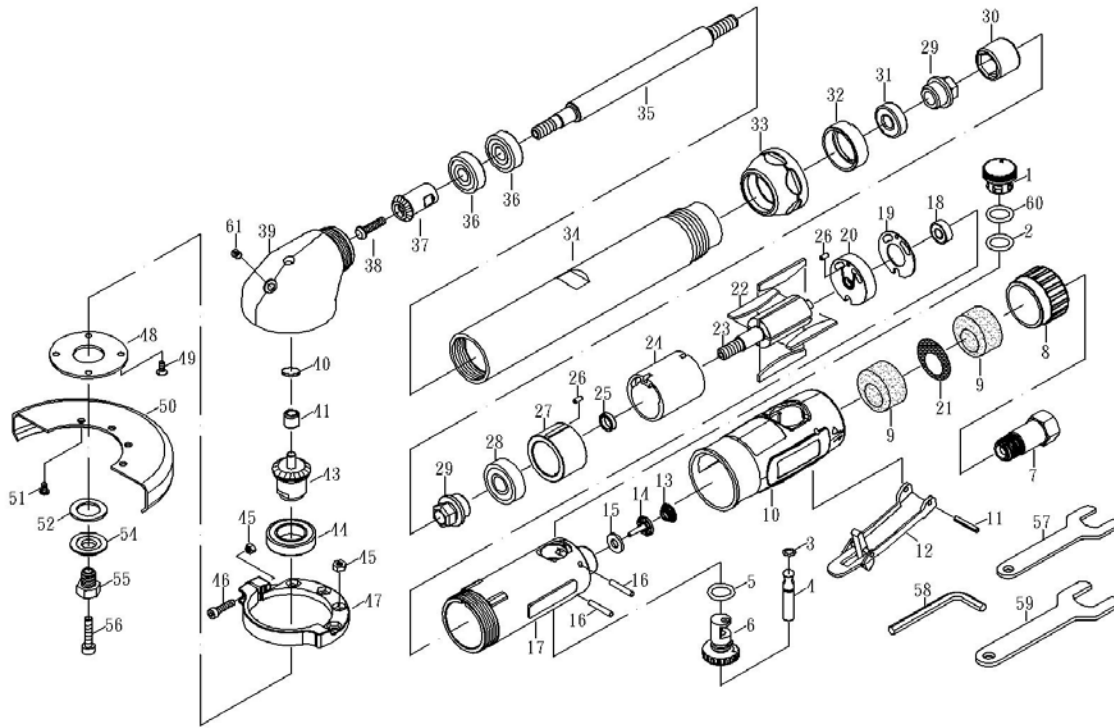


AT-384E AIR EXTENSION REVERSIBLE CUT OFF TOOL



Part List

NO	PART NO	DESCRIPTION	Q'TY	UNIT	NO	PARTS NO	DESCRIPTION	Q'TY	UNIT
				PRICE					PRICE
1	ST25101A	REGULATOR	1	1.19	31	ST530RXL30	BEARING (699)	1	2.42
2	ST25102	O-RING (AS015)	1	0.11	32	ST25432	NUT	1	1.42
3	OB-04	O-RING (3.5*1.4)	1	0.11	33	ST25433	CLAMP NUT	1	1.68
4	OB-05	VAVLE STEM	1	0.52	34	ST25434	SPINDLE HOUSING	1	6.53
5	OB-02	O-RING (P10)	1	0.11	35	ST25435	SPINDLE	1	6.15
6	ST25106	REGULATOR	1	0.75	36	ST288734	BEARING (609)	2	2.61
7	ST25107	AIR INLET	1	1.19	37	ST25437	PINION GEAR(14T)	1	5.59
8	ST25108	EXHAUST SLEEVE	1	0.48	38	21331	SCREW (M5*20)	1	0.11
9	ST25109	SILENCER	2	0.26	39	ST25439	ANGLE HOUSING	1	4.47
10	ST250R10	PROTECTING RUBBER	1	1.86	40	ST25440	WASHER	1	0.11
11	12012.1	PIN	1	0.11	41	ST25441	BEARING (HKU609)	1	2.61
12	ST25112	LEVER	1	1.42	43	ST25443	PINION GEAR(21T)	1	7.08
13	ST288314	SPRING	1	0.15	44	ST25444	BEARING (6904)	1	7.08
14	ST288315	VALVE	1	0.26	45	ST21538	NUT	5	0.19
15	ST288316	WASHER (6*13.8*1.6T)	1	0.26	46	L4-42	SCREW (M4*16)	1	0.19
16	ST25116A	PIN (2.8*25.8L)	2	0.19	47	ST25447	HANDLE LINK	1	1.49
17	ST25117	HOUSING	1	5.97	48	ST25448	FACE PLATE	1	0.93
18	22536A	BEARING (626)	1	1.68	49	81317	SCREW(M4*10)	4	0.19
19	ST25119	WASHER (17*33.2*0.8T)	1	0.26	50	ST25450	DISC COVER	1	2.80
20	ST25120	REAR PLATE	1	2.61	51	ST288542	SCREW (M4*6)	4	0.19
21	ST25121	MUFFLER	1	0.26	52	ST25452	NUT	1	0.19
22	ST25122	ROTOR BLADE	4	0.30	54	ST25454	WASHER	1	0.93
23	ST25423	ROTOR	1	5.59	55	ST25455	NUT	1	1.31
24	ST21315	CYLINDER	1	4.85	56	ST25456	SCREW	1	0.26
25	ST25125	BEARING SPACER	1	0.30	57	BT21038-14	STOP SPANNER (14mm)	1	0.48
26	70018	PIN (2.5*6L)	2	0.11	58	26045	HEX (4mm)	1	0.26
27	ST25127	FRONT PLATE	1	3.36	59	BT25141	STOP SPANNER (17mm)	1	0.93
28	ST25128A	BEARING (6000ZZ)	1	2.42	60	OB-11.1	O-RING (P14)	1	0.11
29	200L26	COUPLING NUT	2	1.12	61	21029	OIL CUP	1	0.26
30	ST200L27	COUPLING	1	1.31					

WE RESERVE THE RIGHT FOR ANY DESIGNING CHANGES TO THE PARTS AND WITHOUT ANY NOTICEMENT IN ADVANCE.

REMARKS:

1. COLOR IN YELLOW, THESE PARTS ARE MAJOR REQUIREMENT.
2. COLOR IN BLUE, THESE PARTS ARE SECONDARY REQUIREMENT.