

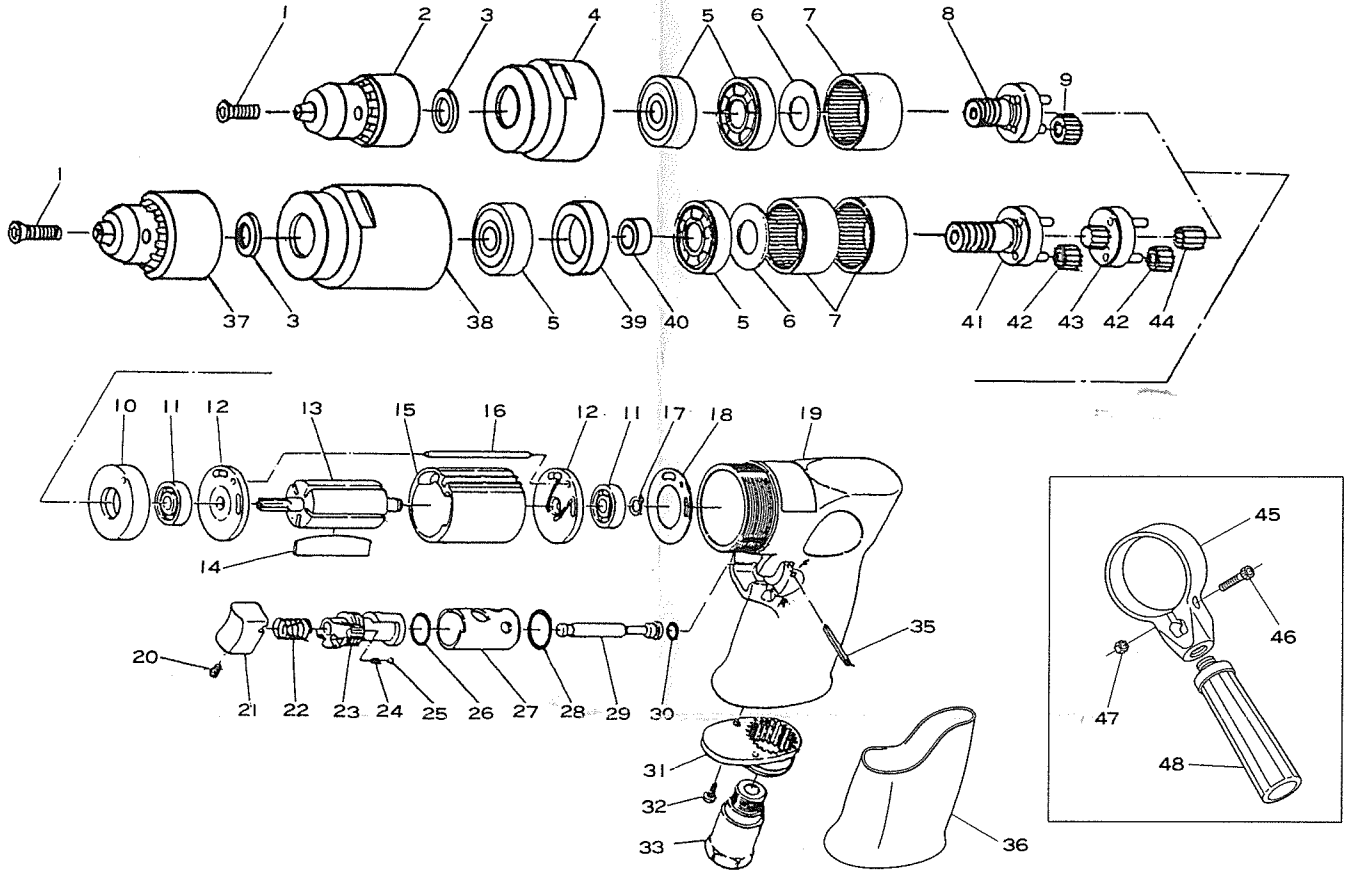


ENDEAVOUR TOOLS PTY. LTD.

Endeavour Tools Pty. Ltd.
50 Jellico Drive
Scoresby, Vic, 3179.
Telephone: (03)9753-3800

2/10 Ferngrove Place, Chester Hill,
N.S.W., Australia, 2162.
Telephone: (02)9743-7244

E-5305A
2000R.P.M 3/8" Reversible Drill
E-5305-8A
800R.P.M 1/2" Reversible Drill



Ref. No.	Parts No.	Description	Q'ty	Ref. No.	Parts No.	Description	Q'ty
1	215-1	Chuck Screw	1	27	217-6	Reverse Bushing	1
2	22BA	3/8" Drill Chuck w/Handle KK	1	28	P-14	O-Ring	1
3	680-7	Spacer	1	29	217-3	Valve Stem	1
4	215-41	Clamp Nut	1	30	P-4	O-Ring	1
5	6201-Z	Ball Bearing	2	31	120-11	Deflector	1
6	957-35	Washer	1	32	JBM30-80	Screw	2
7	217-10	Internal Gear	1(2)	33	120-17SC	Inlet Bushing incl. Screen (680-28A)	1
8	215-40	Work Spindle incl. Pins (300-21x3)	1	35	25-24	Roll Pin (2.5-24A)	1
9	217-12	Planet Gear incl. Bush (217-33)	3	36	217-45	Housing Cover	1
10	217-18	Spacer	1	★37	31902	1/2" Drill Chuck w/Handle KK	1
11	626	Ball Bearing	2	★38	215-8-5	Clamp Nut	1
12	217-14	End Plate	2	★39	215-8-2	Outer Collar	1
13	217-17	Rotor	1	★40	215-8-3	Inner Collar	1
14	350-16	Rotor Blade	5	★41	215-8-1	Work Spindle incl. Pins (300-21x3)	1
15	217-15	Cylinder	1	★42	217-8-2	Planet Gear incl. Bush (217-8-3)	6
16	200-34	Cylinder Pin	1	★43	217-8-5	Reduction Spindle incl. Pinion & Pins (217-8-6, 300-21x3)	1
17	JS-6	Retaining Ring	1	★44	217-8-4	Pinion Gear	1
18	217-32	Motor Gasket	1	★45	210-5-1	Clamp Ring	1
19	217-1A	Motor Housing	1	★46	Z-M60-200	Cap Screw	1
20	R-M40-60	Set Screw	1	★47	N1-M60	Nut	1
21	120-18	Trigger	1	★48	240-50	Handle	1
22	120-31	Valve Spring	1	*49	KK	Chuck Handle for 22BA, SM8K61 & 31902	1
23	217-5	Reverse Lever	1	*◆50	LX10	3/8" Cap. Keyless Chuck (3/8" Thd.)	
24	217-44	Rubber Cushion	1	*◆★51	LM13W	1/2" Cap. Keyless Chuck (3/8" Thd.)	
25	SB-25	Steel Ball	1				
26	990-26-1	O-Ring	1				

* Not Shown ◆ Option
★ For E-5305-8A

Printed in Japan
Jun. 2006