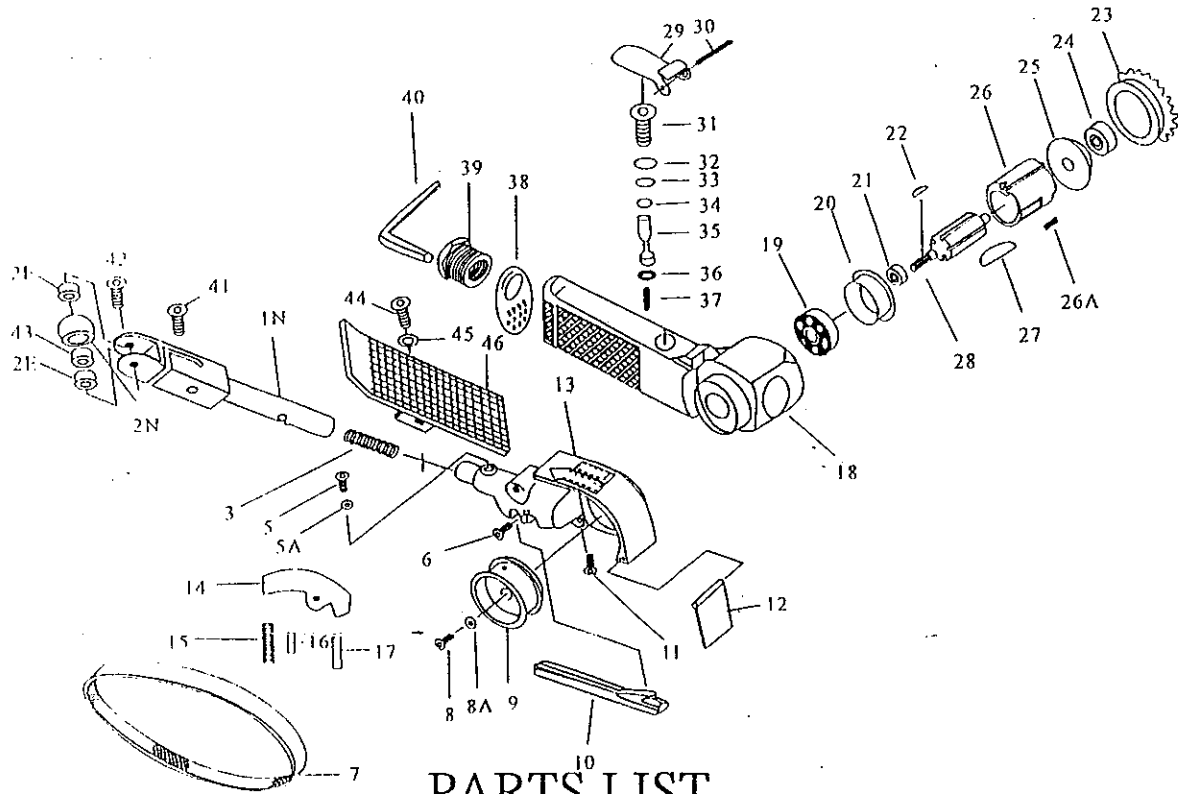


# AT713 Belt Sander -20mm(W) x 520mm (L)

TECHNICAL	Free Speed	: 16,000 RPM
DETA	Sanding Belt Size	: 20mm(wide)x520mm (Length)
	Air Inlet	: 1/4"-18NPT (19PT)
	Net Weight	: 1.1KGS
	All Length	: 360mm
	Opt. Air Pressure	: 90PSI
	Avg. Air Consumption	: 6 CFM



# AJAX



## PARTS LIST

INDEX	PART #	DESCRIPTION	INDEX	PART #	DESCRIPTION	INDEX	PART #	DESCRIPTION
1N	713 01N	Idle Pulley Bracket Sub Ass'y	15	713 15	Spring	31	713 31	Valve Body
2	713 02	Idle Pulley Set (2N,2F,43)	16	713 16	Lever Pin	32	713 32	"O" Ring
2N	713 02N	Idle Pulley	17	713 17	Lever Pin	33	713 33	"O" Ring
2E	713 02E	Ball Bearing (2)	18	713 18	Housing	34	713 34	"O" Ring
3	713 03	Spring	19	713 19	Ball Bearing	35	713 35	Valve Stem
5	713 05	Hex. Socket Head Bolt	20	713 20	Front End Plate	36	713 36	"O" Ring
5A	713 05A	Cup Spring	21	713 21	Spacer	37	713 37	Valve Stem Spring
6	713 06	Hex. Socket Bolt	22	713 22	Sunk Key	38	713 38	Diffuser Exhaust
7	713 07	Sanding Belt (#100)	23	713 23	Cap	39	713 39	Air Inlet Bushing
7A	713 07A	Sanding Belt (#80)	23	713 24	Ball Bearing	40	713 40	Hex. Wrench Key
8	713 08	Hex. Socket head Bolt	25	713 25	Rear End Plate	41	713 41	Screw
8A	713 08A	Washer	26	713 26	Cylinder	41A	713 41A	"C" Clip
9	713 09	Drive Pulley	26A	713 26A	Pin	42	713 42	Idle Pulley Screw
10	713 10	Flat Shoe	27	713 27	Rotor Blade (5)	43	713 43	Washer
11	713 11	Hex. Socket Head Bolt	28	713 28	Rotor	44	713 44	Screw
12	713 12	Dust Cover	29	713 29	Throttle Lever	45	713 45	Spring Washer
13	713 13	Guard Body	30	713 30	Lever Pin	46	713 46	Finger Pad Ass'y
14	713 14	Tension Bar						