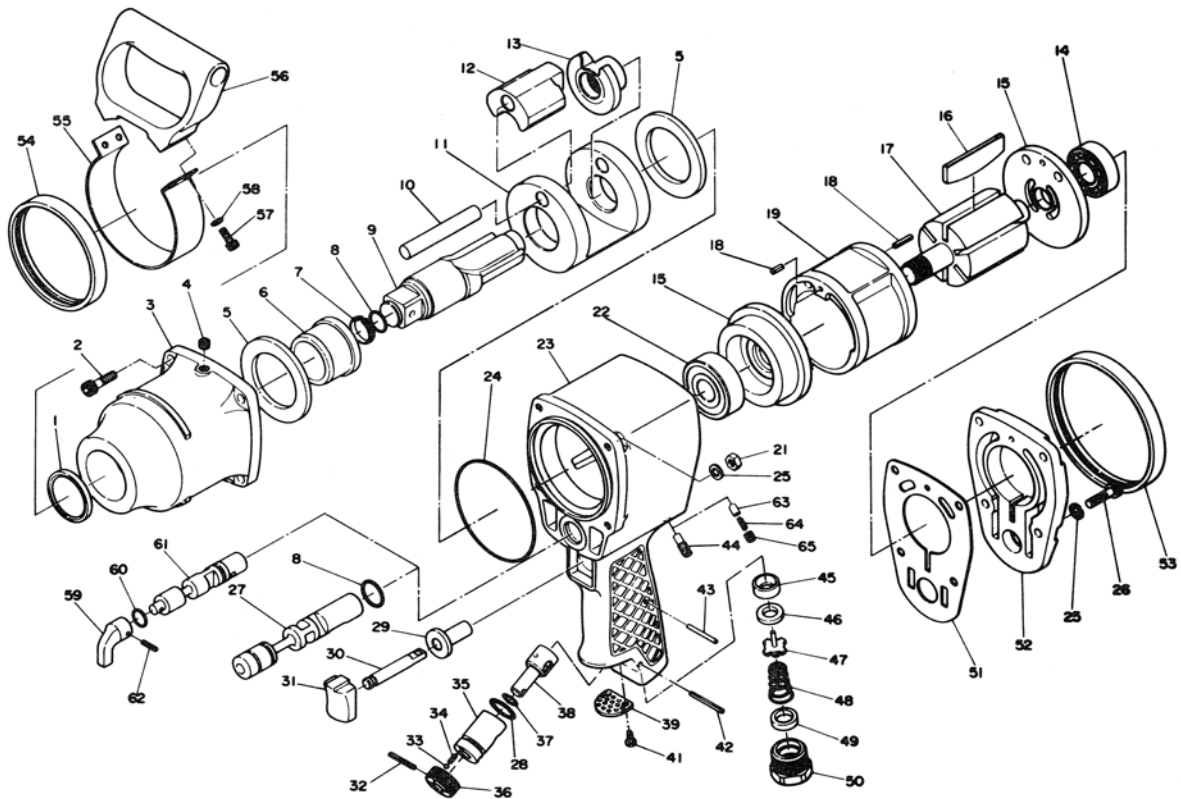


E1860A / E1866A

1" Sq. Drv. Pistol Type Impact Wrench



Ref. No.	Parts No.	Description	Q'ty	Ref. No.	Parts No.	Description	Q'ty
1	#970-2	Oil Seal	1	33	SB-1/8	Steel Ball	1
2	Z-M80-300	Cap Screw	4	34	#960-50	Regulator Spring	1
3	#970-1	Hammer Case	1	35	#960-43	Regulator Bush	1
4	PT-1/8	Grease Plug	1	36	#960-46	Regulator Dial	1
5	#970-11	Spacer	2	37	P-8	Regulator O-Ring	1
6	#970-10	Anvil Bush	1	38	#970-50	Regulator	1
7	#970-12	Socket Retainer	1	39	#970-45	Deflector A	1
8	P-18	O-Ring	1	41	JBM-40-100	Tapping Screw	2
9	#970-14	Anvil	1	42	30-28	Roll Pin (3-28mm)	1
9	#970-60	6"Long Anvil	1	43	#200-31	Pin	1
10	#970-16	Hammer Pin	1	44	#960-28	Reverse Valve Screw	1
11	#970-15	Hammer Cage	1	45	#960-36	Valve Seat Reciever	1
12	#970-17	Hammer Dog	1	46	#960-34	Valve Seat	1
13	#970-18	Hammer Cam	1	47	#960-35	Valve Assy. incl. Roll Pin (3-32mm)	1
14	6205	Ball Bearing	1	48	#960-32	Valve Spring	1
15	#970-23	End Plate incl. Plugs	2	49	#960-37	Spacer	1
16	#970-26	Rotor Blade	6	50	#960-51	Inlet Bushing	1
17	#970-25	Rotor	1	51	#970-29	Motor Gasket	1
18	50-18	Roll Pin (5-18mm)	2	52	#970-30	Housing Cap	1
19	#970-27	Cylinder	1	53	#970-44	Housing Band	1
21	NI-M80	Nut	4	54	#970-43	Protect Band	1
22	6205-ZZ	Ball Bearing	1	55	#970-7	Handle Braket	1
23	#970-21	Motor Housing incl. Rev. Bush	1	56	#970-6	Handle	1
24	#970-20	O-Ring	1	57	Z-M60-150	Cap Screw	4
25	HSW-80	Washer	8	58	HSW-60	Washer	4
26	Z-M80-250	Cap Screw	4	59	#960-57	Reverse Lever	1
27	#970-33	Reverse Valve	1	60	P-14	O-Ring	1
28	#960-27	O-Ring	1	61	#970-62	Reverse Valve	1
29	#970-37	Valve Pin Bush	1	62	30-18	Roll Pin (3-18mm)	1
30	#970-40	Valve Pin	1	63	#960-61	Reverse Valve Pin	1
31	#960-29	Trigger Button	1	64	#960-62	Reverse Valve Pin Spring	1
32	30-20	Roll Pin (3-20mm)	1	65	R-M60-80	Reverse Valve Screw	1