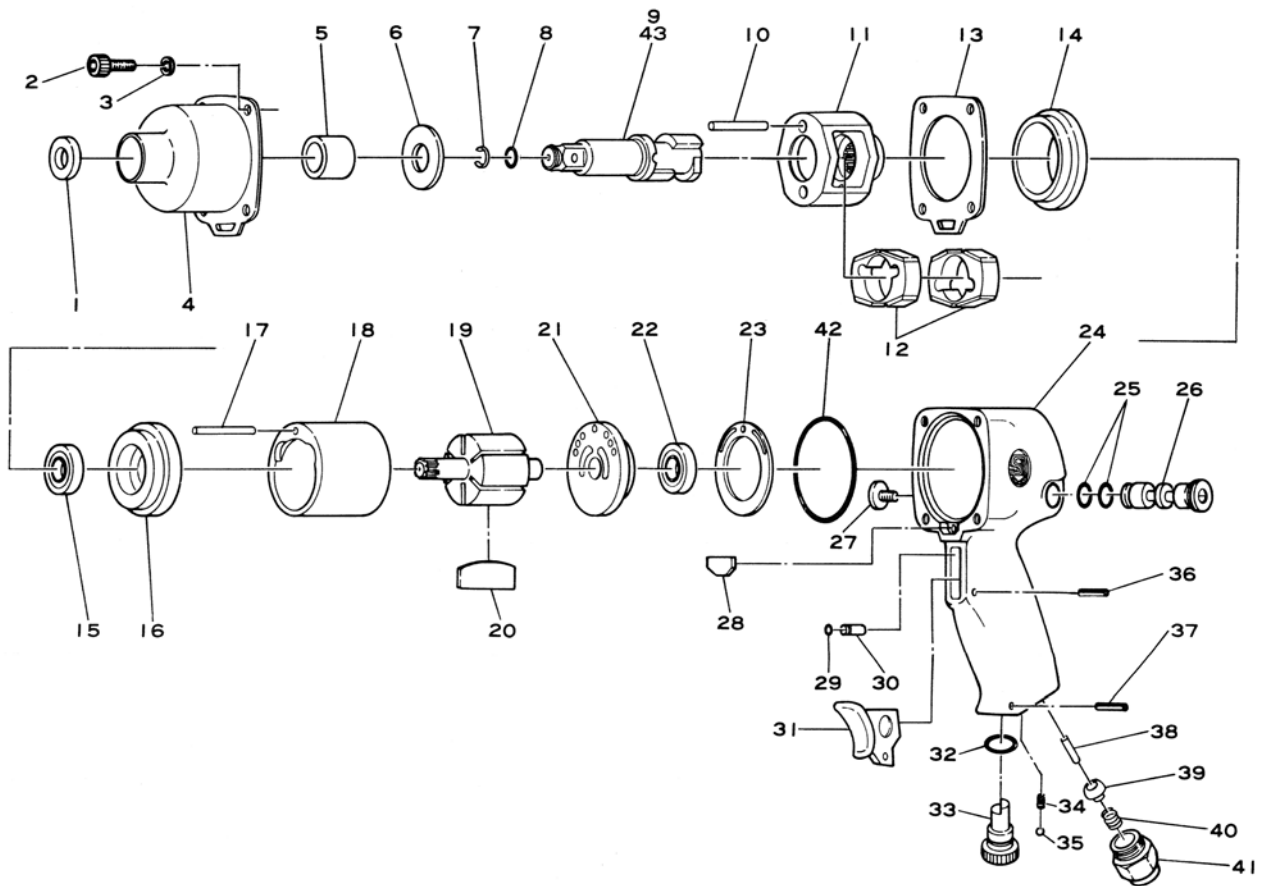


# E1430T

## 1/2" Sq. Drv. Twin Hammer Impact Wrench

# E1432T

## Long Anvil 1/2" Sq. Drv. Twin Hammer Impact Wrench



Ref. No.	Parts No.	Description	Q'ty	Ref. No.	Parts No.	Description	Q'ty
1	910-18	Oil Seal	1	23	930-15	Motor Gasket	1
2	Z-1024-180	Cap Screw	4	24	930-1SI	Motor Housing incl. Bush & Steel Ball (930-9,SB-8)	1
3	HSW-50	Washer	4	25	930-52	O-Ring	2
4	935-18	Hammer Housing incl. Bush & Oil Seal (910-18,910-12)	1	26	930-7	Reverse Valve	1
5	910-12	Anvil Bushing	1	27	930-8	Reverse Valve Screw	1
6	910-16	Spacer	1	28	930-20	Deflector	1
7	930-48	Socket Retainer Ring	1	29	440-26	Push Pin O-Ring	1
8	P-7	O-Ring	1	30	440-18	Push Pin	1
9	935B-2	1/2" Sq. Anvil	1	31	930B-10	Trigger	1
10	935-4	Hammer Pin	2	32	P-12	O-Ring	1
11	935B-3	Hammer Cage	1	33	930-10	Air Regulator	1
12	935-1	Hammer Dog	2	34	450-45	Regulator Spring	1
13	930-45	Hammer Housing Gasket	1	35	SB-1/8	Steel Ball	1
14	930-22	Hammer Cage Spacer	1	36	30-18	Roll Pin (3-18mm)	1
15	6202	Ball Bearing	1	37	30-20	Roll Pin (3-20mm)	1
16	930B-4	Front Plate	1	38	930-12	Valve Pin	1
17	910-21	Motor Pin	1	39	930B-12B	Valve	1
18	930B-1	Cylinder	1	40	440-33	Valve Spring	1
19	930B-2	Rotor	1	41	990-26-5	Inlet Bushing	1
20	930B-3	Rotor Blade	6	42	930B-15	O-Ring	1
21	930B-5	Rear Plate	1	★43	935B-2L	1/2" Sq. 2" Long Anvil	1
22	6201	Ball Bearing	1	*44	930B-12	Housing Cover (Optional)	

\* Not Shown  
★ For E-1432T

Printed in Japan  
★ Nov. 1998