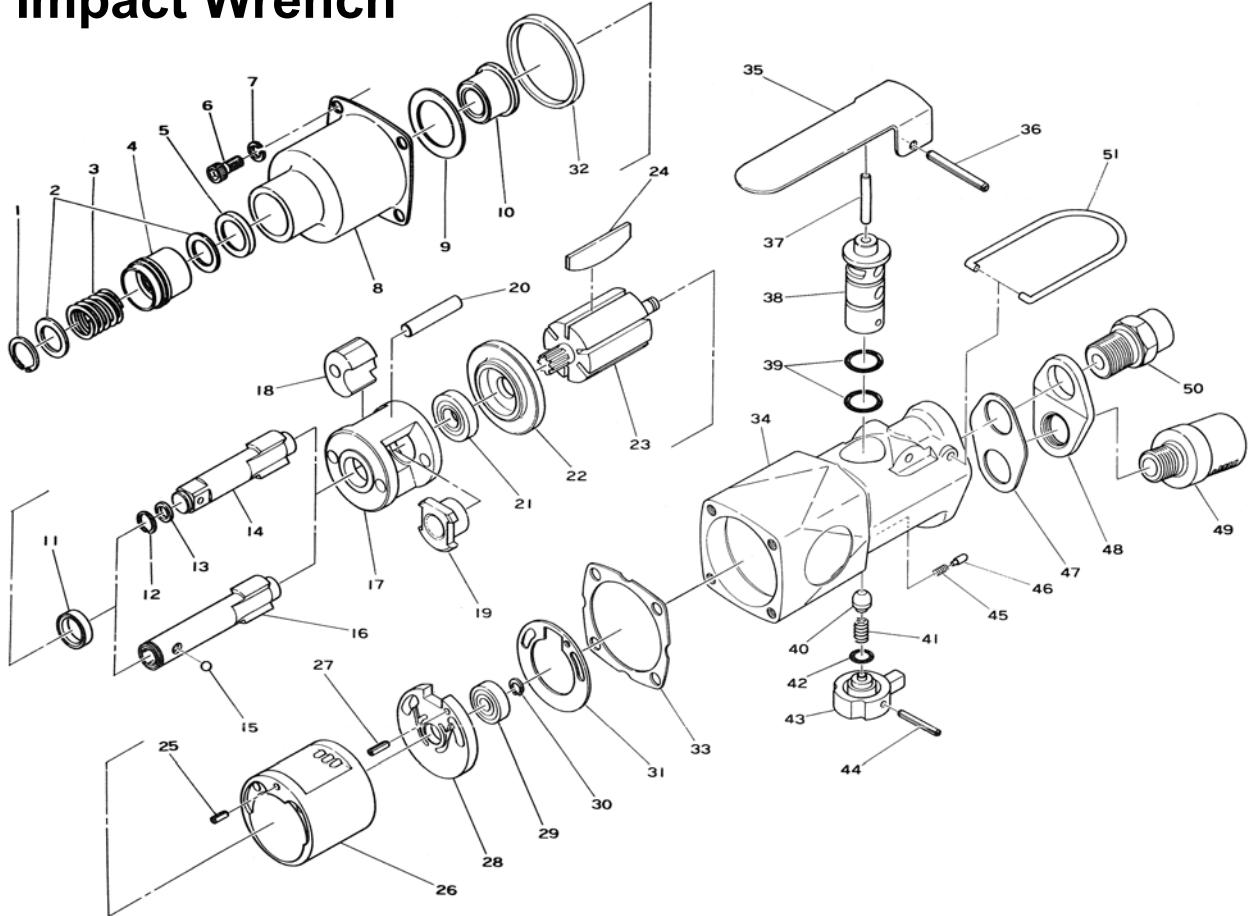


E1370

Impact Wrench

E1370D

Impact Wrench



Ref. No.	Parts No.	Description	Q'ty	Ref. No.	Parts No.	Description	Q'ty
1	GV-12	Retaining Ring	1	27	25-15	Roll Pin (2.5-15mm)	1
2	#430-52	Retaining Washer	2	28	#458-5	Rear Plate	1
3	#430-53	Chuck Sleeve Spring	1	29	626	Ball Bearing	1
4	#430-51	Chuck Sleeve	1	30	JS-6	Retaining Ring	1
5	#450-17	Oil Seal	1	31	#457-2	Motor Gasket	1
6	Z-1024-150	Cap Screw	4	32	#457-3	Hammer Housing Spacer	1
7	HSW-50	Washer	4	33	#458-31	Hammer Housing Gasket	1
8	#458-30	Hammer Housing incl. Oil Seal & Anvil Bushing	1	34	#457-1	Motor Housing incl. Rev. Bush	1
9	#458-59	Spacer	1	35	#456D-35	Throttle Lever	1
10	#450-20	Anvil Bushing	1	36	40-32	Lever Pin (4-32mm)	1
11	#450-54	Collar	1	37	#456D-40	Valve Pin	1
12	#450-10	Socket Retainer	1	38	#456D-38	Reverse Valve	1
13	#450-11	O-Ring	1	39	#990-26-32	O-Ring	2
14	#452-2	3/8" Sq. Anvil	1	40	#300-10	Valve	1
15	SB-3/16	Steel Ball	1	41	#670-49	Valve Spring	1
16	#452-4	1/4" Hex. Anvil	1	42	P-8	O-Ring	1
17	#452-1	Hammer Cage	1	43	#456D-37	Reverse Lever	1
18	#450-51	Hammer Dog	2	44	30-22	Roll Pin (3-22mm)	1
19	#452-3	Cam	1	45	#450-45	Spring	1
20	#450-52	Hammer Pin	2	46	#670-17	Reverse Pin	1
21	EE-3	Ball Bearing	1	47	#457-5	Exhaust Gasket	1
22	#458-4	Front Plate	1	48	#457-4	Exhaust Retainer	1
23	#458-7	Rotor	1	49	#911-51	Muffler incl. Cover & O-Ring	1
24	#458-8	Rotor Blade	6	50	#911-48	Inlet Bushing	1
25	25-8	Roll Pin (2.5-8mm)	1	51	#982-20	Hanger	1
26	#458-6	Cylinder	1	*	#181-51	+ Bit No.2	1

* Not Shown