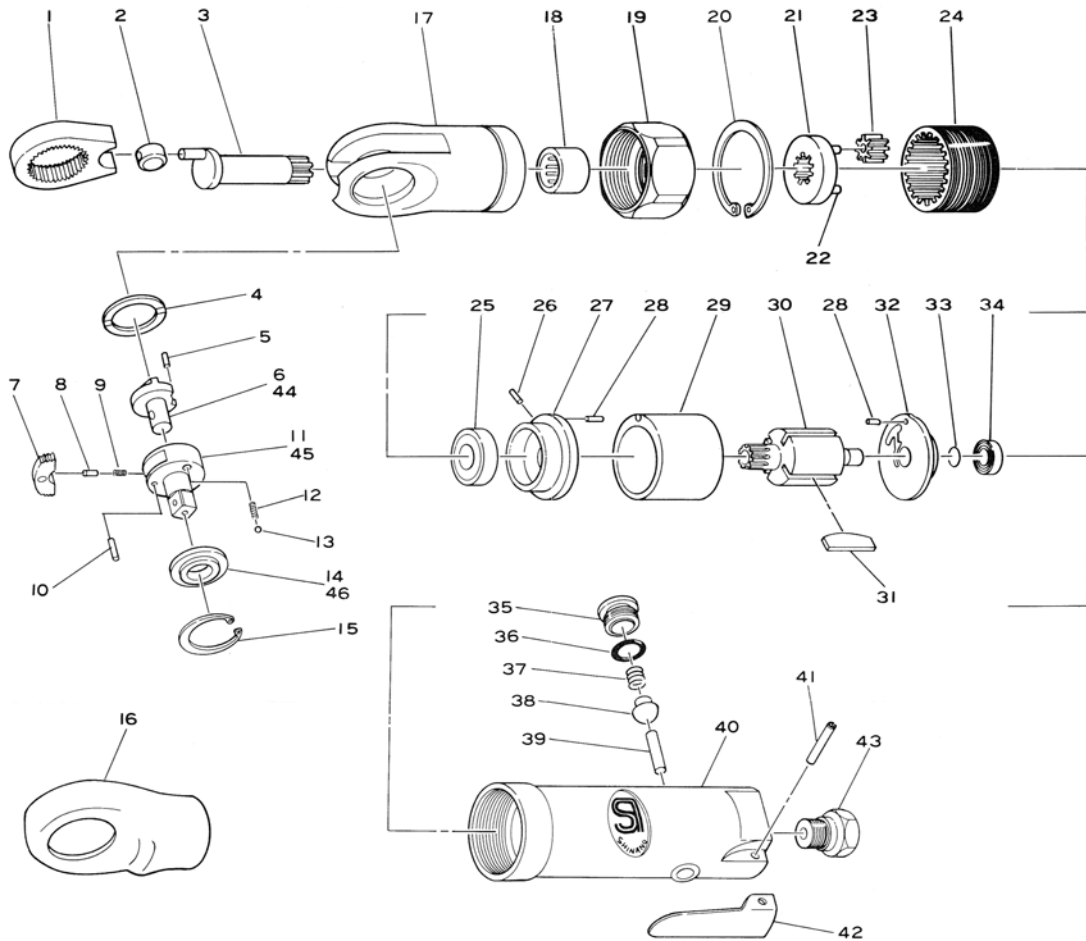


E1200B

1/4" Sq. Drv. Ratchet Wrench

E1205B

3/4" Sq. Drv. Ratchet Wrench



Ref. No.	Parts No.	Description	Q'ty	Ref. No.	Parts No.	Description	Q'ty
1	310-3	Yoke	1	24	310-21	Internal Gear	1
2	310-8	Drive Bushing	1	25	608	Ball Bearing	1
3	310C-1	Crank Shaft	1	26	15-6	Roll Pin (1.5-6mm)	1
4	310-5A	Wear Washer	1	27	310-5	Front Plate	1
5	20-5	Roll Pin (2-5mm)	1	28	25-4	Roll Pin (2.5-4mm)	2
☆6	310-17	Reverse Lever for 1/4"	1	29	330-17	Cylinder	1
7	310-9A	Ratchet Pawl	1	30	310-11	Rotor	1
8	310-16	Reverse Pin	1	31	330-16	Rotor Blade	4
9	310-34	Reverse Spring	1	32	310-4	Rear Plate	1
10	310-24	Dowel Pin	1	33	JS-6.35	Retaining Ring	1
☆11	310-6	1/4" Sq. Anvil	1	34	KE-45	Needle Bearing	1
12	310B-33	Thrust Washer Spring	2	35	800-14	Valve Screw	1
13	SB-30	Steel Ball	2	36	P-9	O-Ring	1
☆14	310-23	Thrust Washer for 1/4"	1	37	670-49	Valve Spring	1
15	OV-22	Retaining Ring	1	38	300-10	Valve	1
16	310-1	Boot	1	39	310-4S	Valve Pin	1
17	310D-2	Ratchet Housing	1	40	310D-1SI	Motor Housing incl. Bush (310-1S)	1
18	HK0910	Needle Bearing	1	41	30-24	Roll Pin (3-24mm)	1
19	310C-2	Lock Ring	1	42	312-12T	Throttle Lever	1
20	CV-24	Retaining Ring	1	43	310-2S	Inlet Bushing	1
21	310-2	Planet Cage incl. Planet Pins (310-19x3)	1	★44	310S-17	Reverse Lever for 3/8"	1
22	310-19	Planet Pin	3	★45	310S-6	3/8" Sq. Anvil	1
23	310-12	Planet Gear	3	★46	310S-23	Thrust Washer for 3/8"	1

☆For E-1200B only
★For E-1205B only

Printed in Japan
★★★★★Apr. 2002