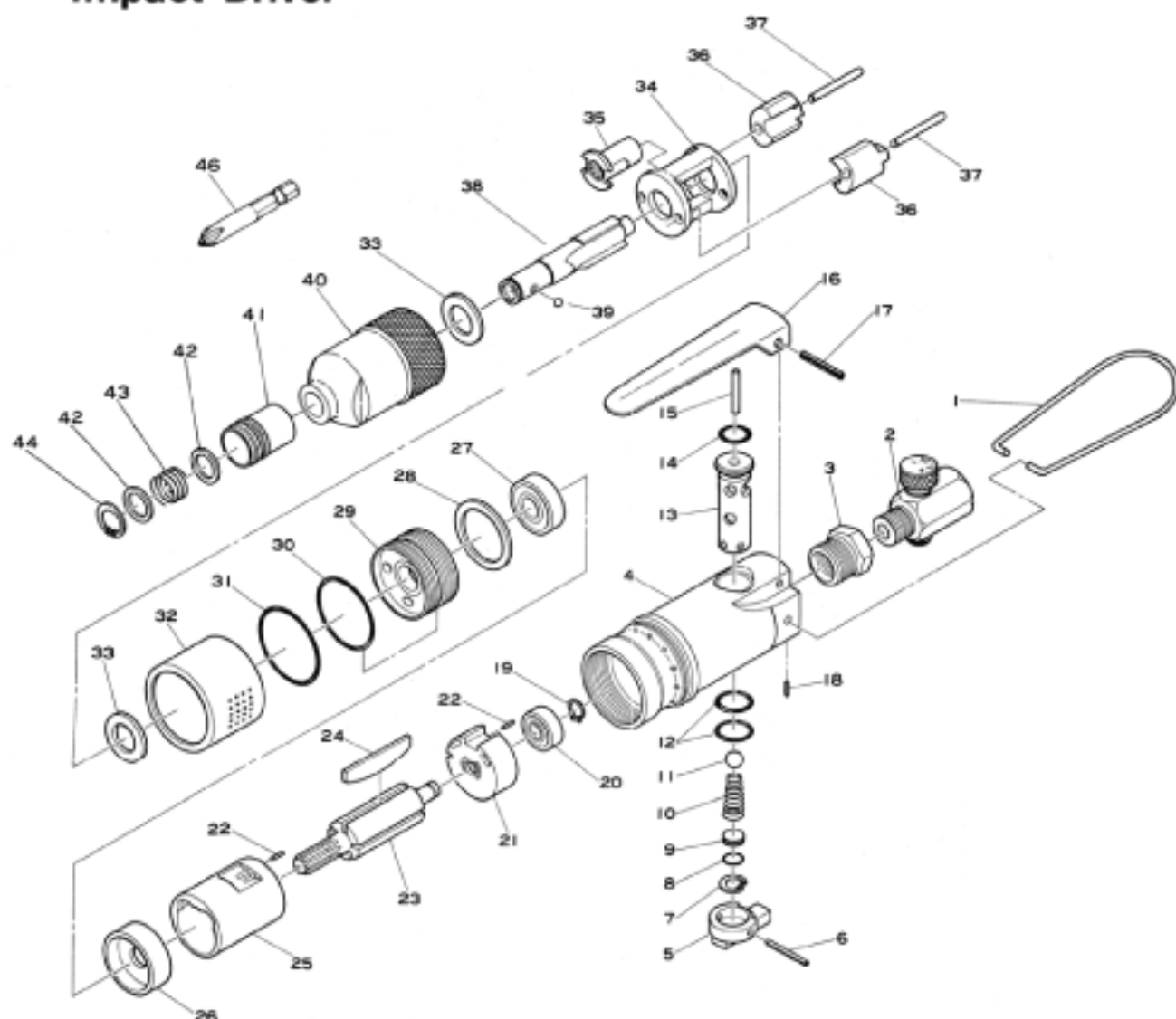


E-1050

Impact Driver



Ref. No.	Parts No.	Description	Q'ty	Ref. No.	Parts No.	Description	Q'ty
1	982-20	Hanger	1	24	181-23	Rotor Blade	5
2	181-45	Air Regulator	1	25	181-21	Cylinder	1
3	670-225C	Inlet Bushing incl. Screen (680-28A)	1	26	181-24	Front Plate	1
4	181-4	Motor Housing	1	27	608	Ball Bearing	1
5	181-14	Reverse Lever	1	28	181-27	Spacer	1
6	20-18	Roll Pin (2-18mm)	1	29	181-28	Lock Nut incl. Cam Bush (181-30)	1
7	JO-8	Retaining Ring	1	30	G-25	O-Ring	1
8	181-12	O-Ring	1	31	181-37	O-Ring	1
9	181-11	Valve Spacer	1	32	181-26	Deflector	1
10	140-6	Valve Spring	1	33	181-36	Spacer	2
11	NB-1/4	Valve Ball	1	34	181-34	Hammer Cage	1
12	990-26-1	O-Ring	2	35	181-31	Drive Cam	1
13	181-5	Reverse Valve	1	36	181-32	Hammer Dog	2
14	P-8	O-Ring	1	37	181-33	Hammer Pin	2
15	410-2	Valve Pin	1	38	181-35A	1/4" Hex. Anvil	1
16	350-2	Throttle Lever	1	39	5B-1/8	Steel Ball	1
17	30-24	Roll Pin (3-24mm)	1	40	181-39A	Hammer Case incl. Anvil Bush (181-38)	1
18	25-5	Roll Pin (2.5-5mm)	1	41	181-54	Chuck Sleeve	1
19	JS-6	Retaining Ring	1	42	181-52	Ret. Washer	2
20	606	Ball Bearing	1	43	181-55	Chuck Sleeve Spring	1
21	181-19	Rear Plate	1	44	GV-10	Retaining Ring	1
22	15-6	Roll Pin (1.5-6mm)	2	46	181-51	+Bit No.2	1
23	181-17	Rotor	1				